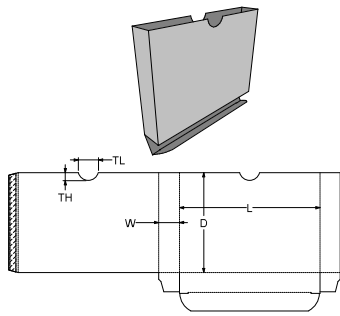
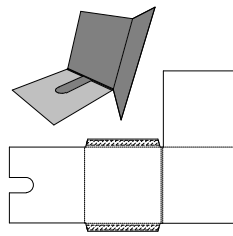


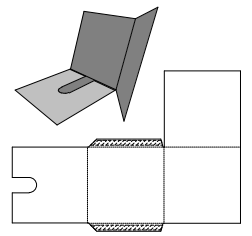
DVD Slip Case - DVD Slip Case



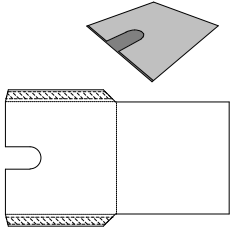
DVD Case - DVD Case



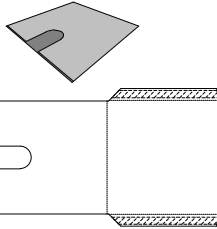
CD Sleeve Side Fold with Gusset - CD Sleeve Side Fold with Gusset



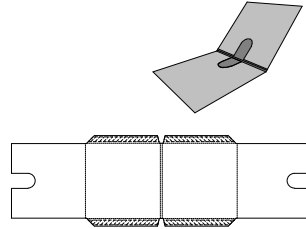
CD Sleeve Side Fold - CD Sleeve Side Fold - Glue to front



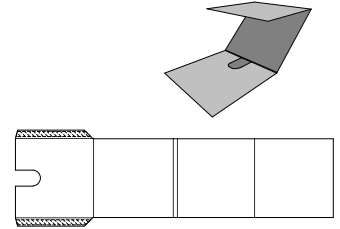
CD Single Fold Sleeve - Style B - CD Single Fold Sleeve - Glue to back



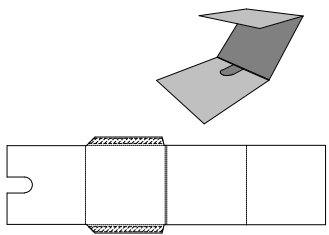
CD Single Fold Sleeve - Style A - CD Single Fold Sleeve - Glue to front



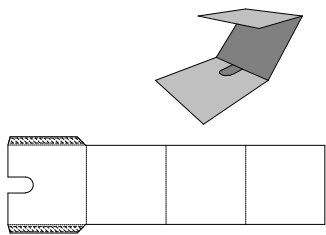
CD Double Sleeve with Gusset - CD Double Sleeve with Gusset



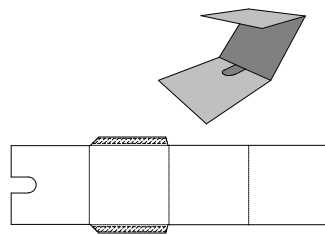
CD 3 Fold Sleeve with Gusset - Style B - CD 3 Fold Sleeve with Gusset - Glue to back



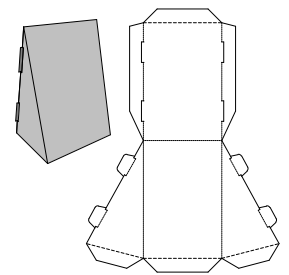
CD 3 Fold Sleeve with Gusset - Style A - CD 3 Fold Sleeve with Gusset - Glue to front



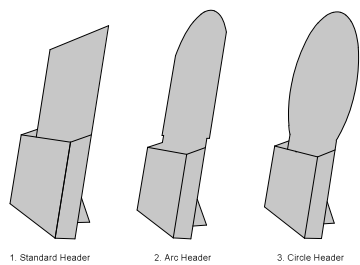
CD 3 Fold Sleeve - Style B - CD 3 Fold Sleeve - Glue to back



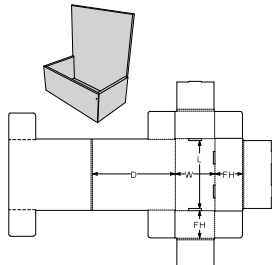
CD 3 Fold Sleeve - Style A - CD 3 Fold Sleeve - Glue to front



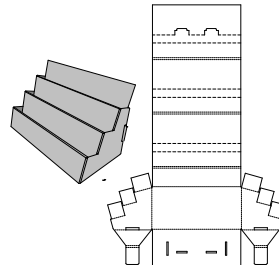
Tent Display - Counter Top Tent Style Graphic Display



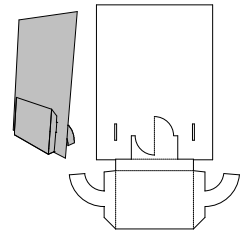
Simple Leaflet Dispenser - Simple Leaflet Dispenser



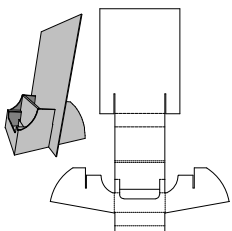
Postcard Holder - Rolled Four Sides



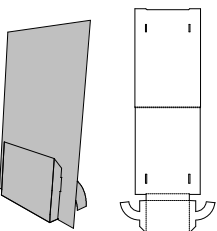
Multi-Tier Shelf - Multi-Tier Shelf



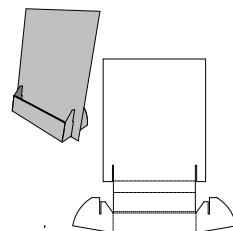
Leaflet Dispenser - Twist Style - Leaflet Dispenser - Twist Style



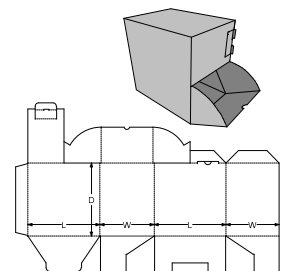
Leaflet Dispenser - Folded Style (3) - Leaflet Dispenser - Folded Style with 2 Pockets



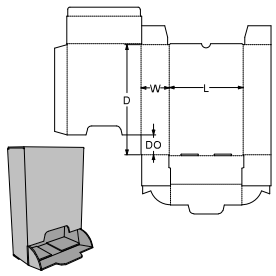
Leaflet Dispenser - Folded Style (2) - Leaflet Dispenser - Folded Style (2)



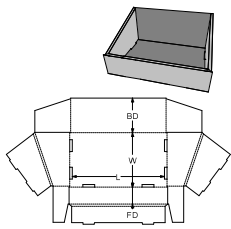
Leaflet Dispenser - Folded Style - Leaflet Dispenser - Folded Style



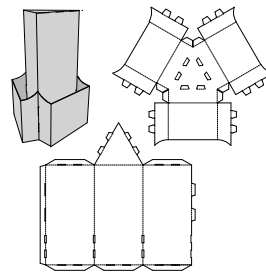
Gravity Fed Dispenser - Gravity Fed Dispenser



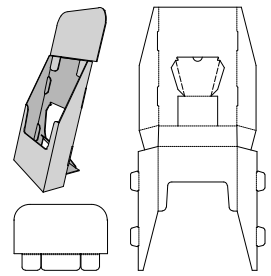
Dispenser Carton - Opening Fixing Tray, Top Tuck to Back



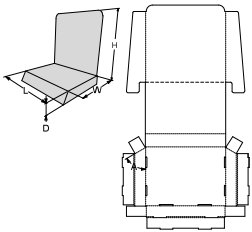
Counterpack (No Header) - Standard Counterpack (No Header)



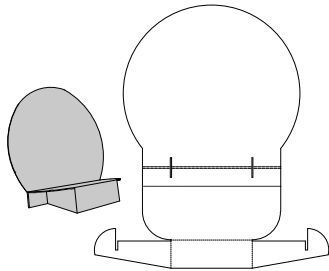
Desk TriHolder - Column Body With Three Pockets



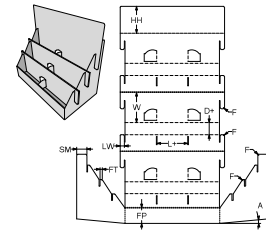
Desk Holder - With/Without Header



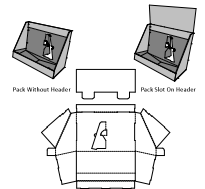
Desk Display Peninsula - Desk Display, Three Sides Open



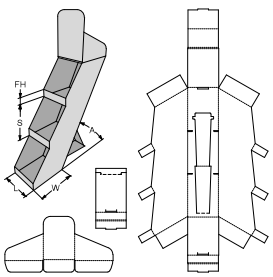
Desk Disk Display Peninsula - Clawlock Feet, Slope Platform



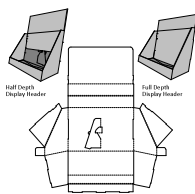
Desk Disc Dispenser - Three Rows, Two or Three Sections in a Row



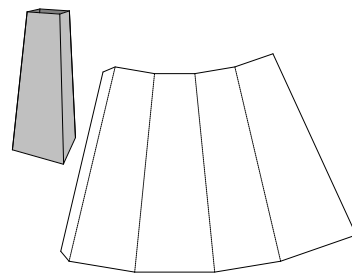
Counterpack (Optional Slot On Header) - Standard Counterpack with optional slot on header



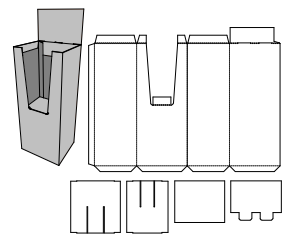
Disc Counter - Display, 3 Shelves and Header



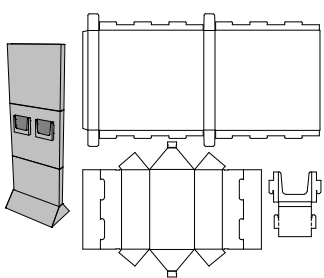
Counterpack (Integral Header) - Standard Counterpack with Integral header (Half or Full Depth)



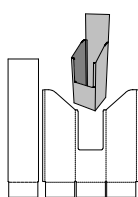
Taper Base Form - Taper Base Form



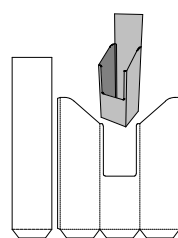
Rectangular Stacker - Stacker Display with False Bottom



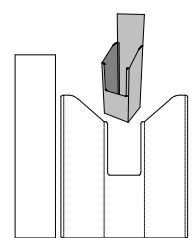
Poster Display - With optional leaflet/brochure holders



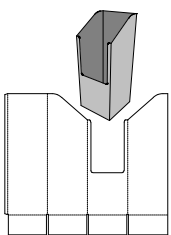
Pallet Wrap - Turn Over Back w/ Slotted Bottom - Pallet Wrap - Turn Over Back w/ Slotted Bottom



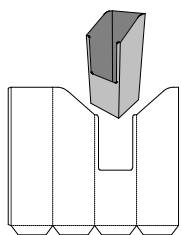
Pallet Wrap - Turn Over Back w/ Flange - Pallet Wrap - Turn Over Back w/ Flange



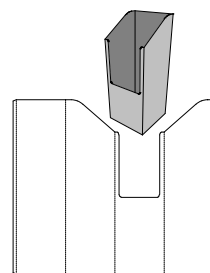
Pallet Wrap - Turn Over Back - Pallet Wrap - Turn Over Back



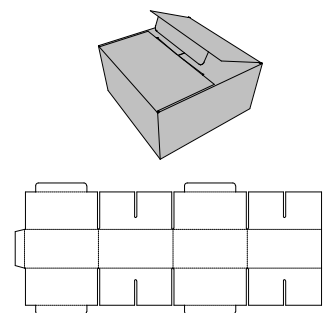
Pallet Wrap - End Joint w/ Slotted Bottom - Pallet Wrap - End Joint w/ Slotted Bottom



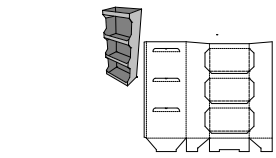
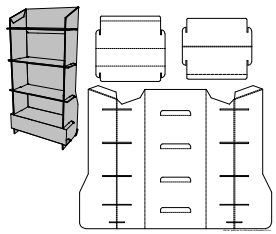
Pallet Wrap - End Joint w/ Flange - Pallet Wrap - End Joint w/ Flange



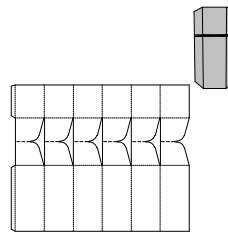
Pallet Wrap - End Joint - Pallet Wrap - End Joint



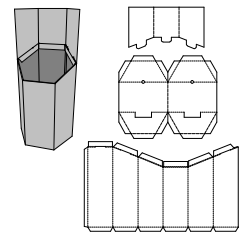
Pallet Base - Pallet Base



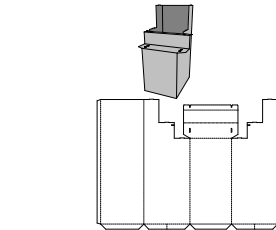
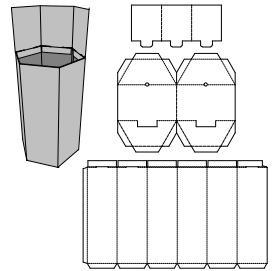
Multi-Shelf Display - One Piece (2-4 shelves) - Multi-Shelf Display - One Piece (2-4 shelves) Weekender



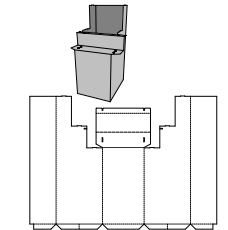
Hexagonal Dumpbin 2 - Twisted Top and Bottom hexagonal dumpbin



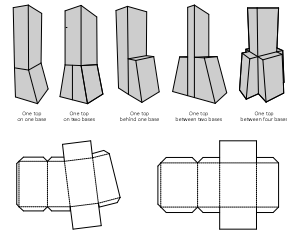
Hexagonal Dumpbin (Sloping Front) - Standard hexagonal dumpbin with sloping front



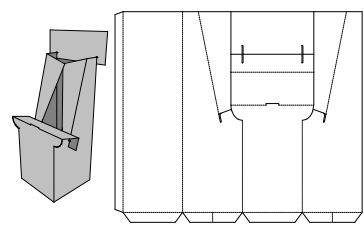
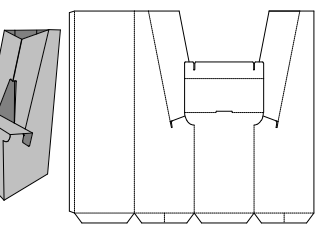
Display Step Base - End Joint - Display Step Base - End Joint



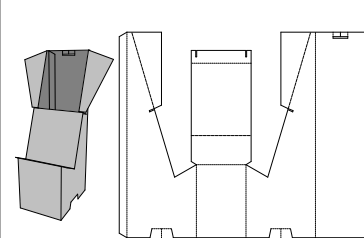
Display Step Base - Centre Joint - Display Step Base - Centre Joint



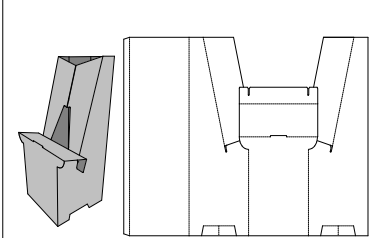
Display Blocks Assembly - Prism and Trapezium Block Designs



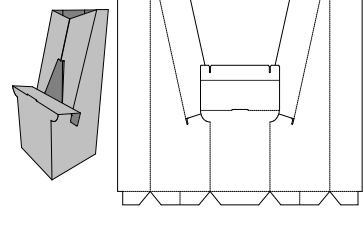
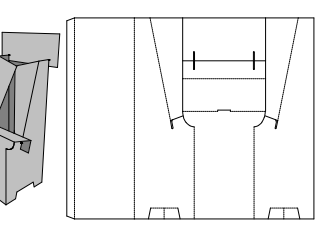
Display Base - End Joint w/Flange (2) - Display Base - End Joint w/Flange



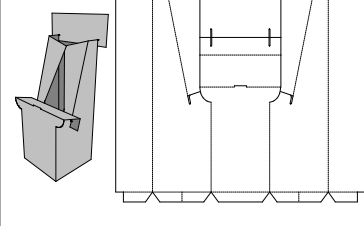
Display Base - End Joint (3) - Display Base - End Joint (3)



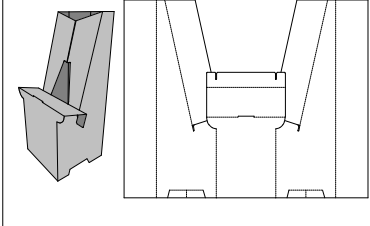
Display Base - End Joint (2) - Display Base - End Joint (2)



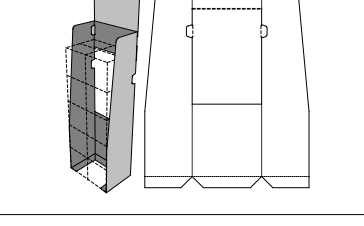
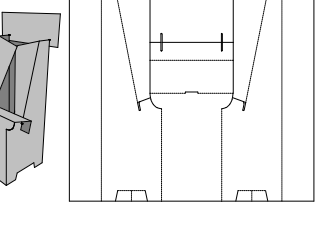
Display Base - Centre Joint w/Flange (2) - Display Base - Centre Joint w/Flange (2)



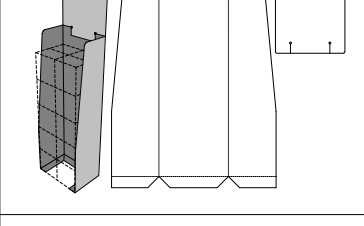
Display Base - Centre Joint w/Flange - Display Base - Centre Joint w/Flange



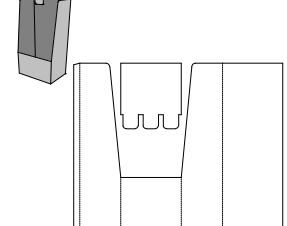
Display Base - Centre Joint (2) - Display Base - Centre Joint (2)



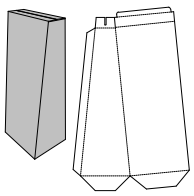
Casewrap Display (3) - Casewrap with Flip-around Header



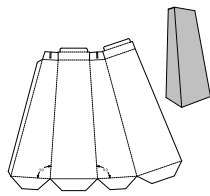
Casewrap Display (2) - Casewrap with external Header



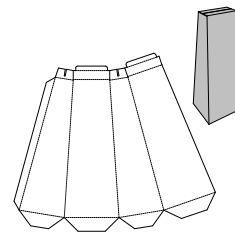
Casewrap Display - Casewrap Display with Header



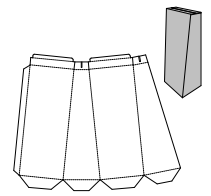
Angle Base Half - End Joint w/Flange and Top - Angle Base Half - End Joint w/Flange and Top



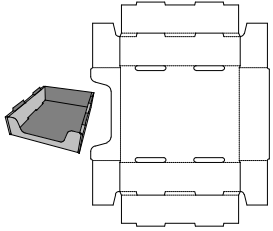
Angle Base - Truncated Pyramid - 90deg Back Wall - Angle Base - End Joint w/Flange and Top



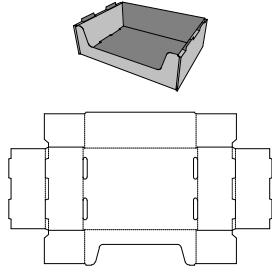
Angle Base - Truncated Pyramid - Angle Base - End Joint w/Flange and Top



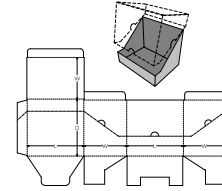
Angle Base - End Joint w/Flange and Top - Angle Base - End Joint w/Flange and Top



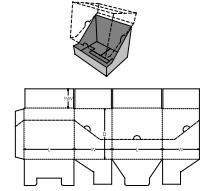
Stackable Rolled Side Tray - Stackable Rolled Side Tray (Fefco 0423)



Stackable Rolled End Tray - Rolled End Tray (Fefco 0422)



Shelf Ready Tuck to Front Top, Envelope Base - Shelf Ready Tuck to Front Top, Envelope Base (Fefco 0215)



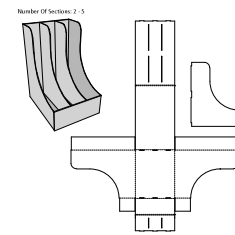
Shelf Ready Regular Slotted Top, Envelope Base - Shelf Ready Regular Slotted Top, Envelope Base (Fefco 0216)



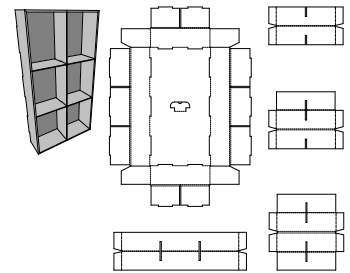
Shelf Ready Regular Slotted Container - Shelf Ready Regular Slotted Container (Fefco 0201)



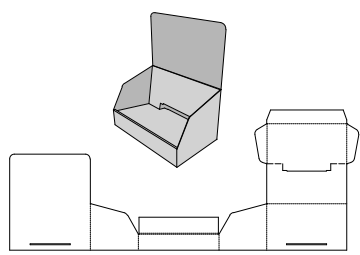
Shelf Ready Half Slotted Container - Shelf Ready Half Slotted Container (Fefco 0200)



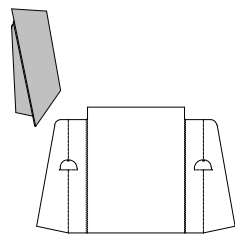
Sectional Tray - Dispenser - Tray - Dispenser, Variable Number of Sections



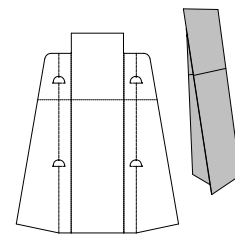
Multi-Cell Tray - Multi-Cell Tray



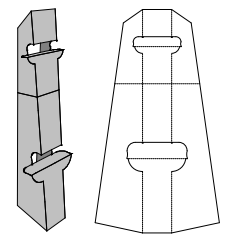
Counter Tray - Counter Tray, Sloped Floor



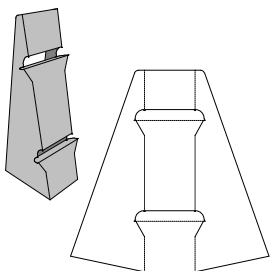
Support Strut w/Front - Single - Support Strut w/Front - Single



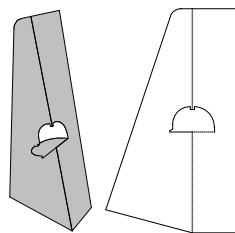
Support Strut w/Front - Double - Support Strut w/Front - Double



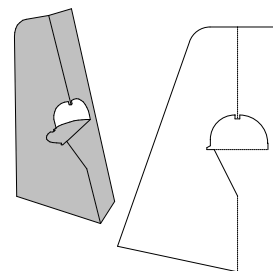
Support Strut - Tall Double (Sloping Top) - Double Wing Easel - Large



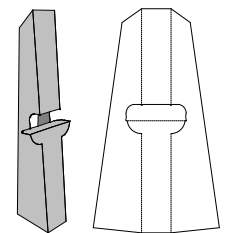
Support Strut - Tall Double - Double Wing Easel - Large



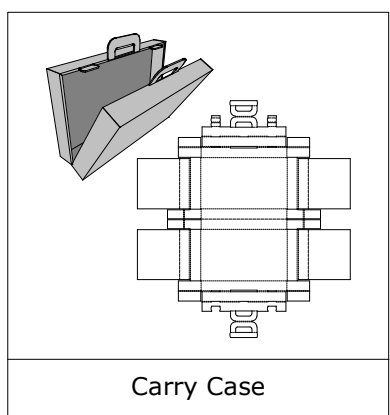
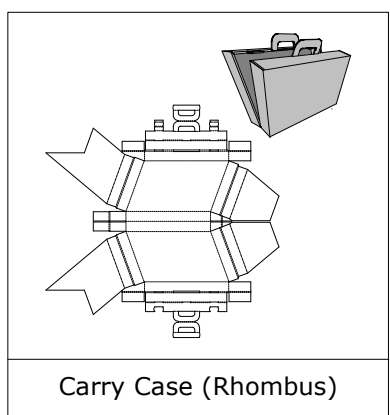
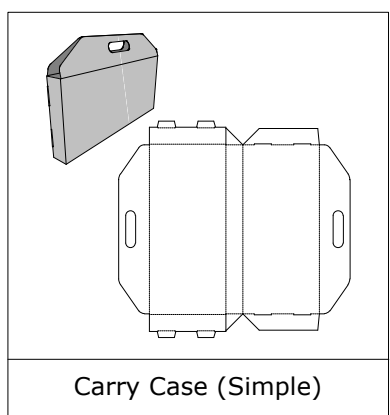
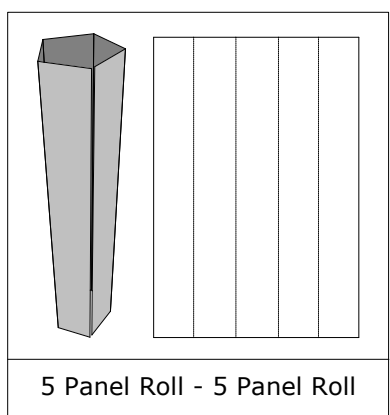
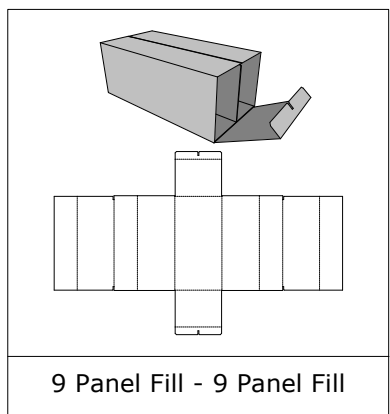
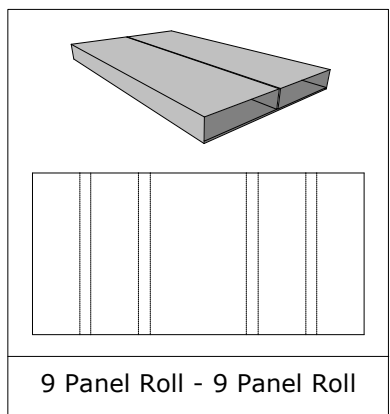
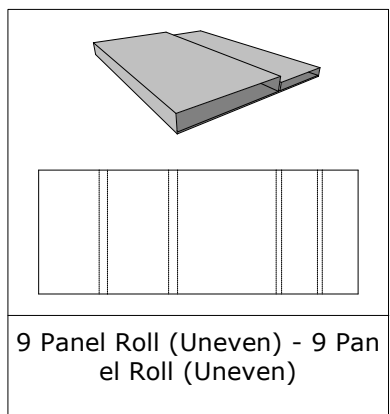
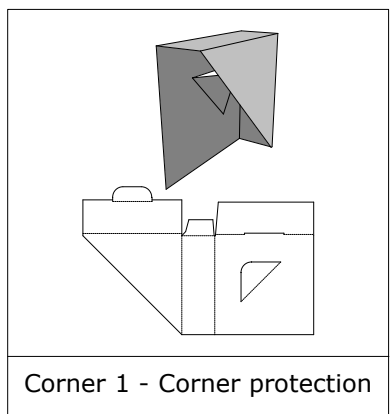
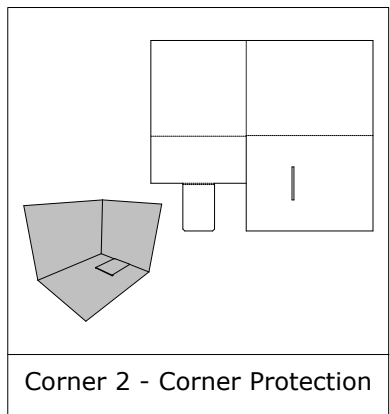
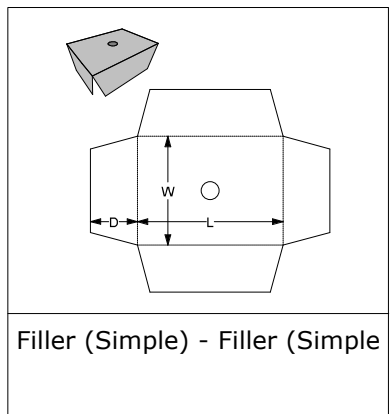
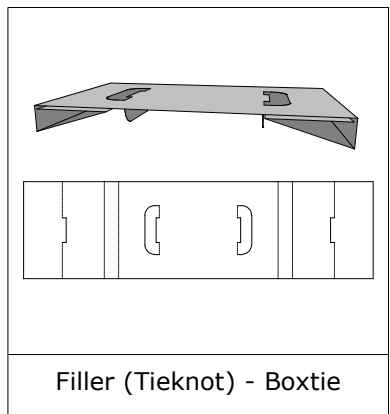
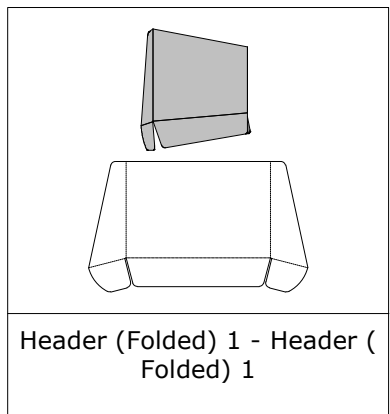
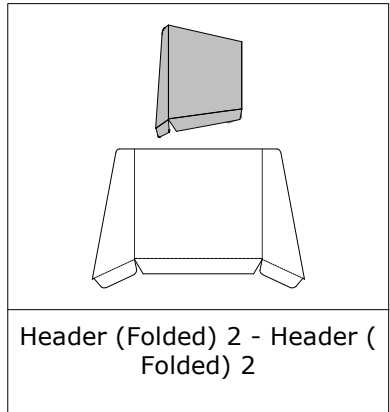
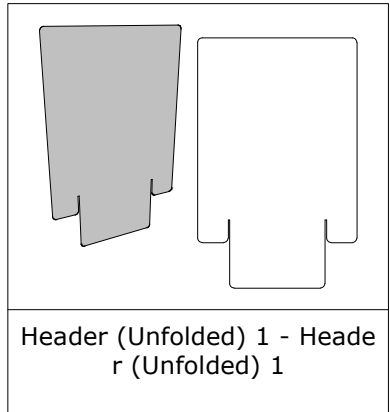
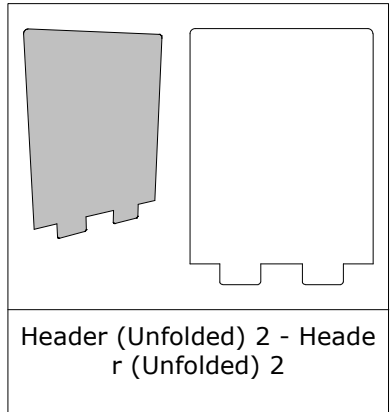
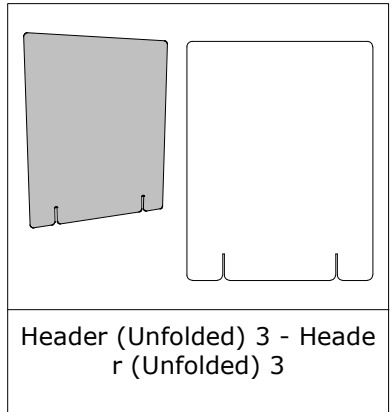
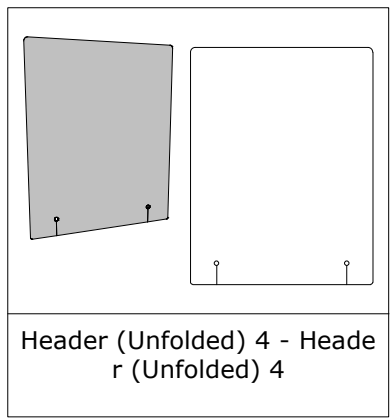
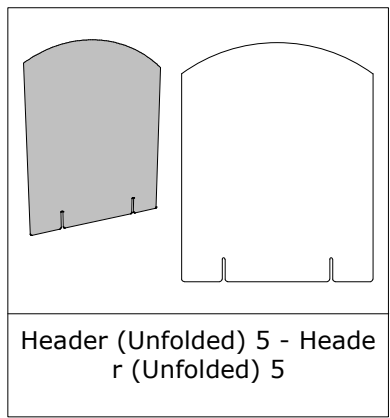
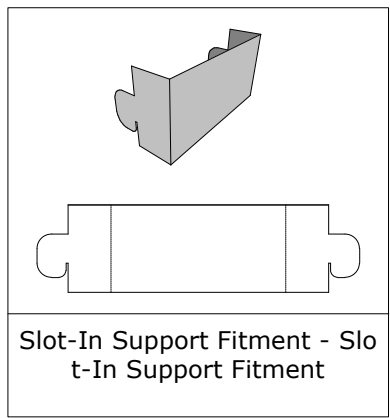
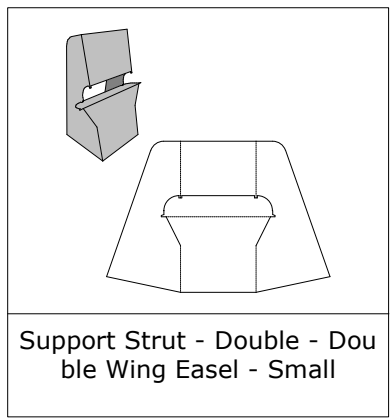
Support Strut - Single (Simple Lock) - Single Wing Easel

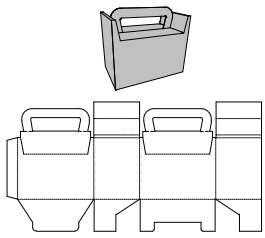


Support Strut - Single - Single Wing Easel

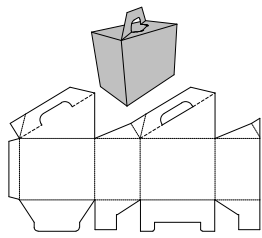


Support Strut - Double (Sloping Top) - Double Wing Easel - Small

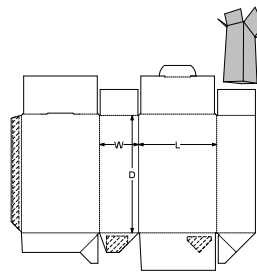




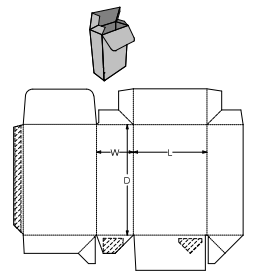
Box Type Carry Case 2 - Carry Handle Top, Envelope Base



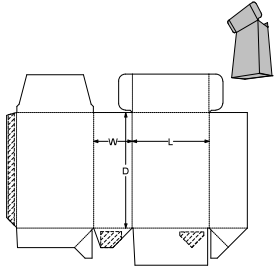
Box Type Carry Case 1 - Carry Handle Top, Envelope Base



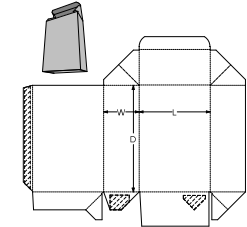
A61.56.01.03 - Edge Lock Skillet Full Crash Lock Base



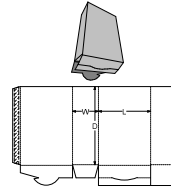
A61.45.01.01 - Sieve Proof Full Crash Lock Base



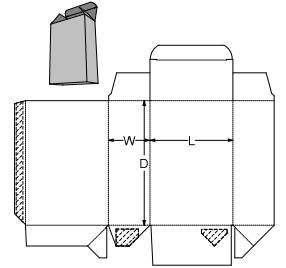
A61.40.01.03 - Side Tuck Full Crash Lock Base



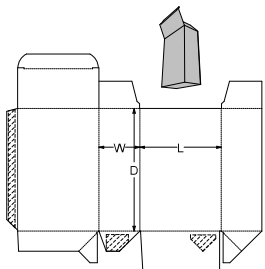
A61.20.01.03.99 (Webbed Tuck) - Webbed Tuck Full Crash Lock Base



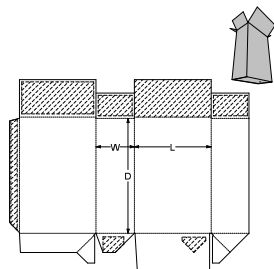
A10.01.01.00.38 (Reclosable opening w. Claw Lock) - Open Ended Locking Skillet Style



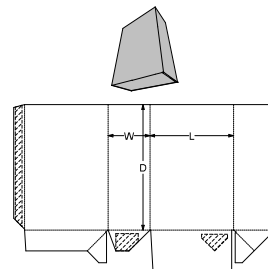
A61.20.01.03 - Tuck to Back Full Crash Lock Base Style A



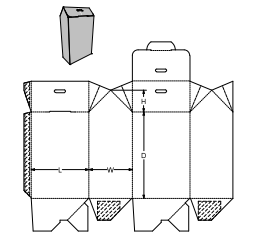
A61.20.01.01 - Tuck to Front Full Crash Lock Base Style B



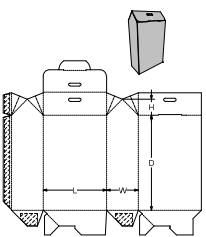
A61.11.01.03 - Square Skillet Full Crash Lock Base



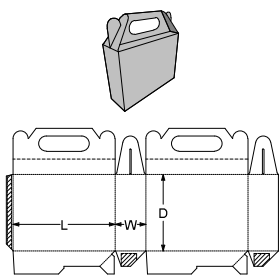
A61.01.01.00 - Open Ended Full Crash Lock Base



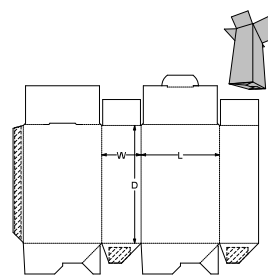
A60.75.00.03 (Roof Top with Side Tabs) - Roof Lock Crash Lock Base



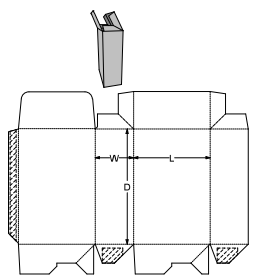
A60.75.00.02 (Roof Top with Side Tabs) - Roof Lock Crash Lock Base



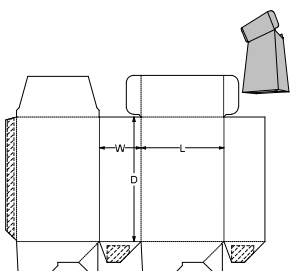
A60.75.00.00 - Carry Handle, Crash Lock Base



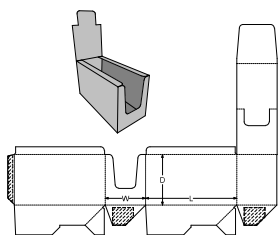
A60.56.00.03 - Edge Lock Skillet Crash Lock Base



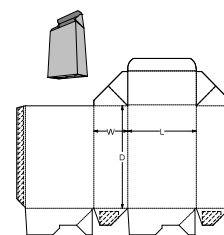
A60.45.00.01 - Sieve Proof Crash Lock Base



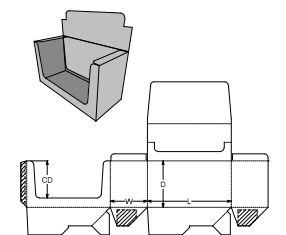
A60.40.00.03 - Side Tuck Crash Lock Base



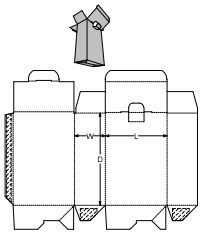
A60.20.00.04.35 (Display Outer) - Display Outer Crash Lock Base



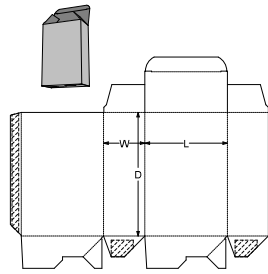
A60.20.00.03.99 (Webbed Tuck) - Webbed Tuck Crash Lock Base



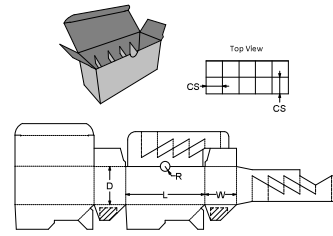
A60.20.00.03.35 (Display Outer) - Display Outer Crash Lock Base



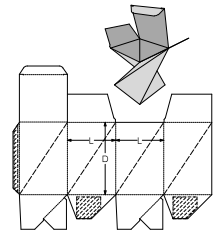
A60.20.00.03.31 (Securing Counterflap) - Double Tuck Crash Lock Base



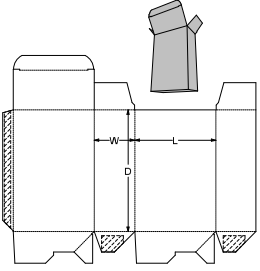
A60.20.00.03 - Tuck to Back Crash Lock Base Style G



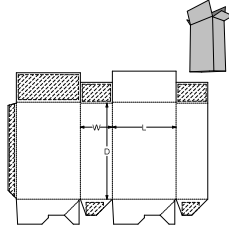
A60.20.00.01 (with Inside Grid) - Tuck to Front Crash Lock Base



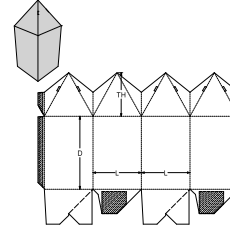
A60.20.00.01 (Twisted Body) - Tuck to Front Crash Lock Base



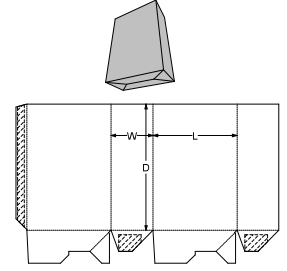
A60.20.00.01 - Tuck to Front Crash Lock Base



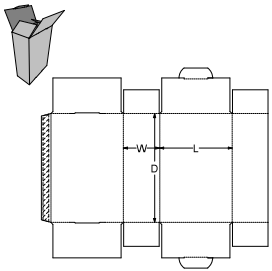
A60.11.00.03 - Standard Skillet Standard Crash Lock Base



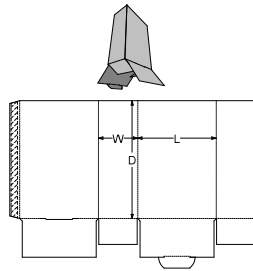
A60.01.00.00 (Pyramid Top) - Pyramid Top and Crash Lock Base



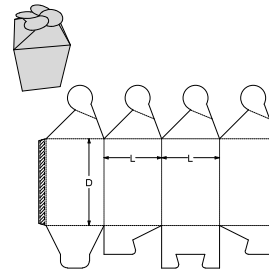
A60.01.00.00 - Open Ended Crash Lock Base



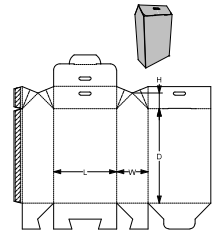
A56.56.03.03 - Edge Lock Skillet



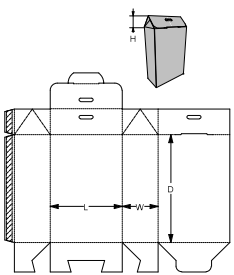
A56.01.03.00 - Open Top Edge Lock Skillet Style B



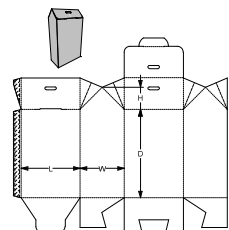
A55.82.01.00 - Rosette Lock Snap Lock Base



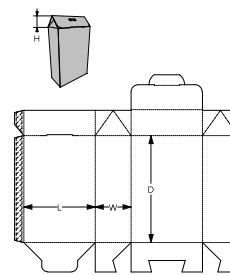
A55.75.04.02 (Roof Top with Side Tabs) - Roof Lock Snap Lock Base



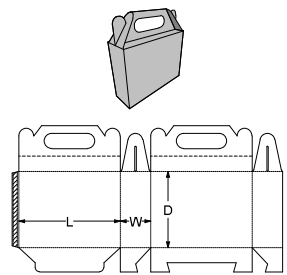
A55.75.04.02 - Roof Lock Snap Lock Base



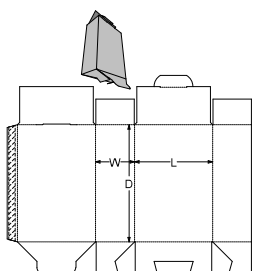
A55.75.01.03 (Roof Top with Side Tabs) - Roof Lock Snap Lock Base



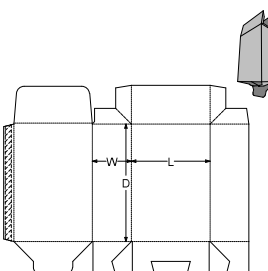
A55.75.01.03 - Roof Lock Snap Lock Base



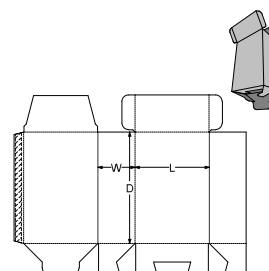
A55.75.01.00 - Carry Handle, Snap Lock Base



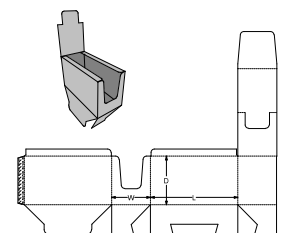
A55.56.01.03 - Edge Lock Skillet Snap Lock Base



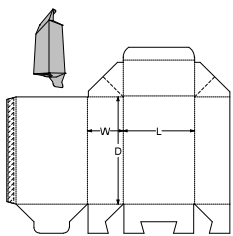
A55.45.01.01 - Sieve Proof Snap Lock Base



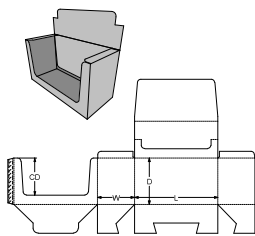
A55.40.01.03 - Side Tuck Snap Lock Base



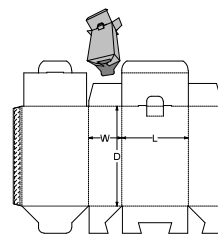
A55.20.01.04.35 (Display Outer) - Display Outer Snap Lock Base



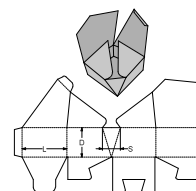
A55.20.01.03.99 (Webbed Tuck) - Webbed Tuck Snap Lock Base



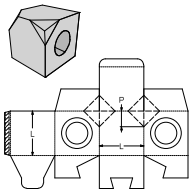
A55.20.01.03.35 (Display Outer) - Display Outer Snap Lock Base



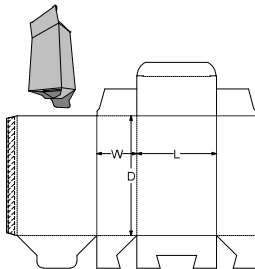
A55.20.01.03.31 (Securing Counterflap) - Double Tuck Snap Lock Base



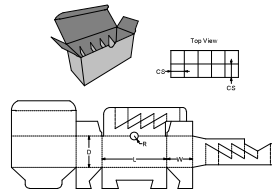
A55.20.01.03 (Sloped Corners) - Sloped 5-th Panel At The Corner, Snap Lock Base



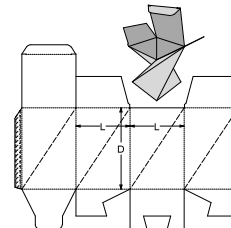
A55.20.01.03 (Pitted Corners) - Open Ended Snap Lock Base, Two Corners Pitted



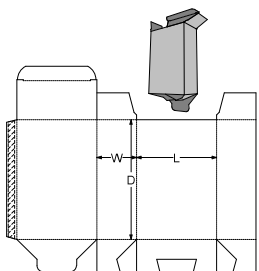
A55.20.01.03 - Tuck to Back Snap Lock Base Style A



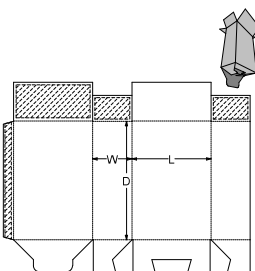
A55.20.01.01 (with Inside Grid) - Tuck to Front Snap Lock Base Style B, with Cells Inside



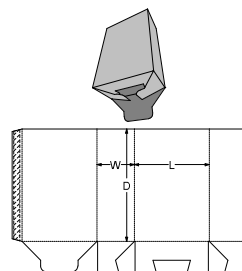
A55.20.01.01 (Twisted Body) - Tuck to Front Snap Lock Base



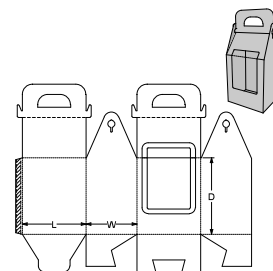
A55.20.01.01 - Tuck to Front Snap Lock Base



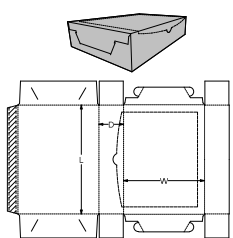
A55.11.01.03 - Square Flap Skillet Snap Lock Base



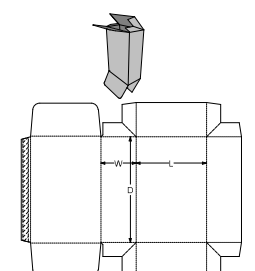
A55.01.01.00 - Open Ended Snap Lock Base



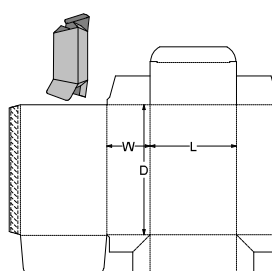
A55.00.01.00.85 - House Roof, Ended Snap Lock Base



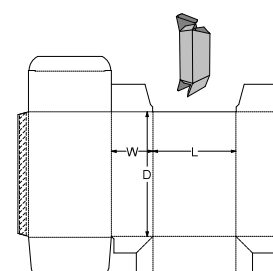
A50.50.03.03.29 - Claw Lock Closure System, Tear-off Open Top



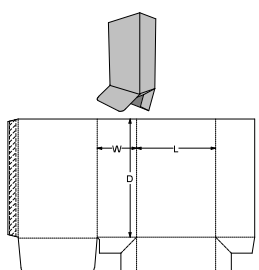
A45.45.01.01 - Sieve Proof Top and Base



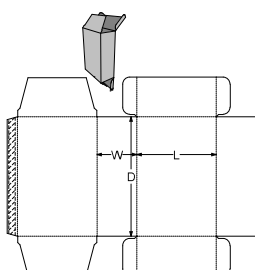
A45.20.01.03 - Tuck to Back Sieve Proof Style A



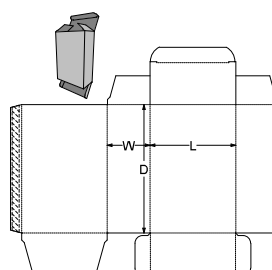
A45.20.01.01 - Tuck to Front Sieve Proof Style B



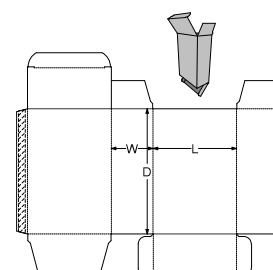
A45.01.01.00 - Open Top Sieve Proof Base



A40.40.03.03 - Side Tuck Top and Base

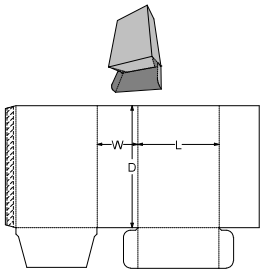


A40.20.03.03 - Tuck to Front Side Tuck Style B

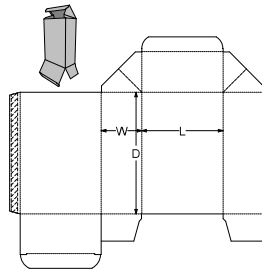


A40.20.03.01 - Tuck to Back Side Tuck Style A

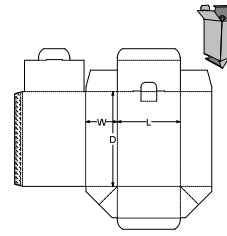




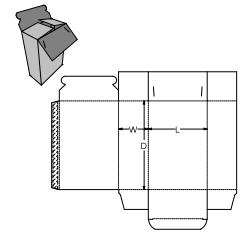
A40.01.03.00 - Open Ended Side Tuck



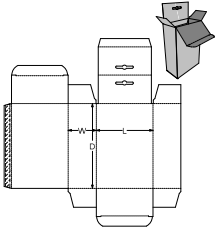
A22.99.01.03 - Webbed Tuck Tuck to Front



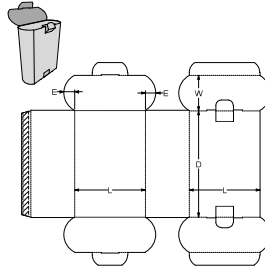
A20.56.03.01.99 (Webbed Tuck & 31 Top) - Double Tuck Webbed Tuck



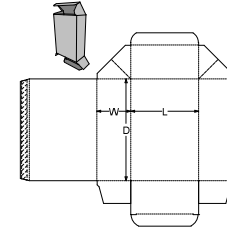
A20.50.03.01 - Tuck-in Bottom, Claw Lock Closure System Top



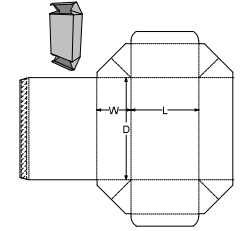
A20.21.03.03 - Reverse Tuck End with Extended Back Panel For Hanging



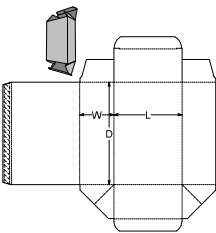
A20.20.04.04 - Securing Counterflap



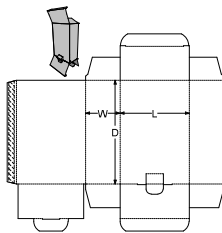
A20.20.03.03.99 (Webbed Tuck, Top) - Webbed Tuck and Tuck to Back



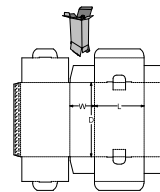
A20.20.03.03.99 (Webbed Tuck, Top & Base) - Same Panel Webbed Tuck



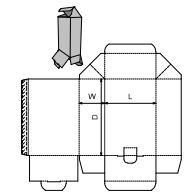
A20.20.03.03.99 (Webbed Tuck, Base) - Tuck to Back Webbed Tuck Style A



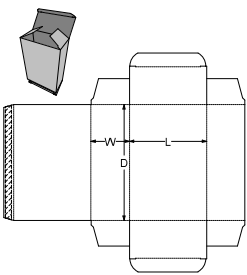
A20.20.03.03.31 (Securing Counterflap) - Tuck to Back Double Tuck



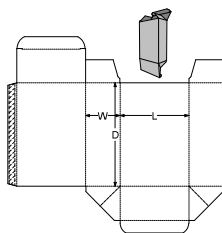
A20.20.03.03.31 (Securing Counterflap Top & Base) - Securing Counterflap Base and Top



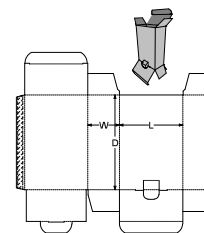
A20.20.03.03.31 (Securing Counterflap & 99 Top) - Securing Counterflap Base, Webbed Tuck Top



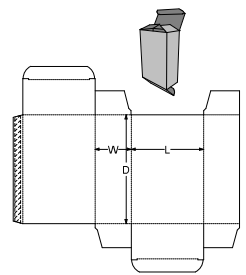
A20.20.03.03 - Same Panel Tuck



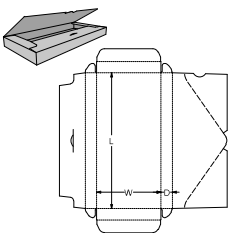
A20.20.03.01.99 (Webbed Tuck) - Tuck to Front Webbed Tuck Style B



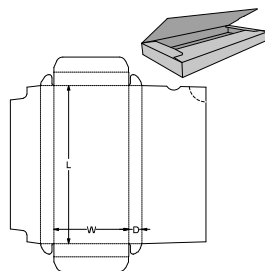
A20.20.03.01.31 (Securing Counterflap) - Securing Counterflap Base



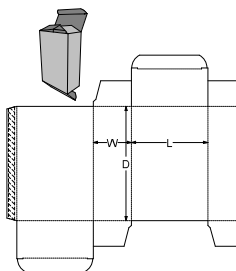
A20.20.03.01 - Reverse Tuck End



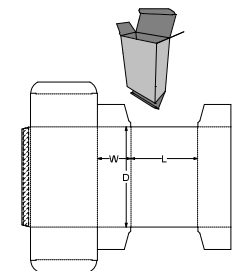
A20.20.02.02 Style B - With Panel Closure, Lock on Length Panel



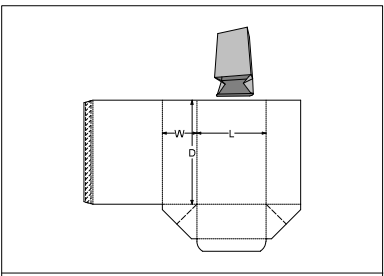
A20.20.02.02 Style A - Glue Seam on Length Panel



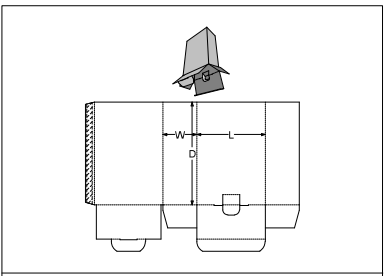
A20.20.01.03 - Inverted Reverse Tuck End



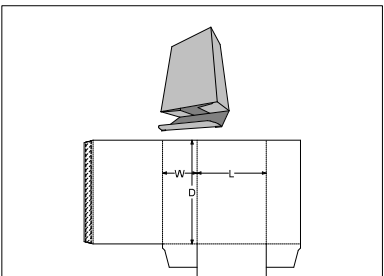
A20.20.01.01 - Aerotuck to Back



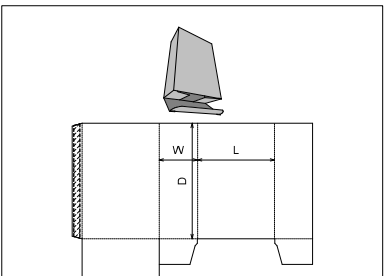
A20.01.03.00.99 (Webbed Tuck) - Open Top Webbed Tuck Base



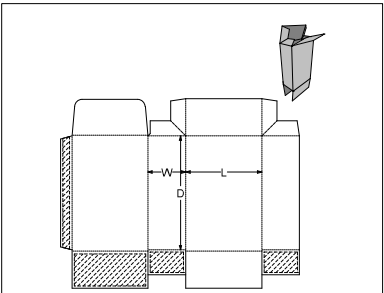
A20.01.03.00.31 (Securing Counterflap) - Open Top Double Tuck Base



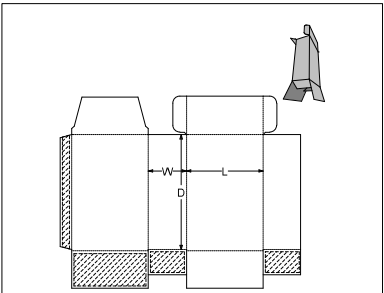
A20.01.03.00 - Tuck to Back - Open Top



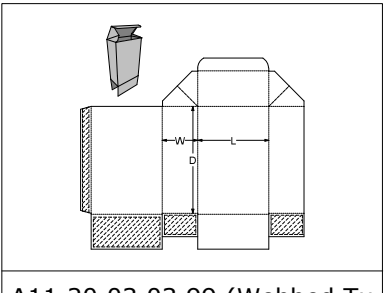
A20.01.01.00 - Tuck to Front - Open Top



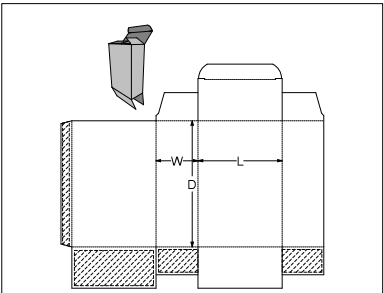
A11.45.01.03 - Sieve Proof Square Flap Skillet



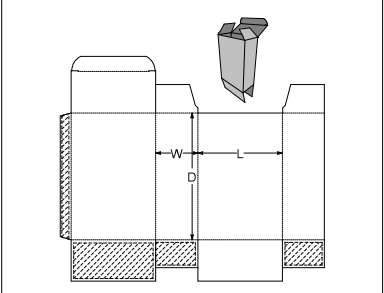
A11.40.03.03 - Side Tuck Square Flap Skillet



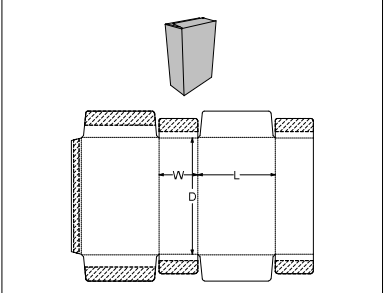
A11.20.03.03.99 (Webbed Tuck) - Webbed Tuck Square Flap Skillet



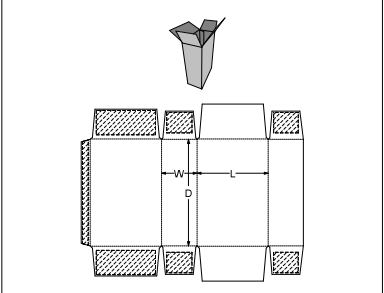
A11.20.03.03 - Tuck to Back Standard Skillet



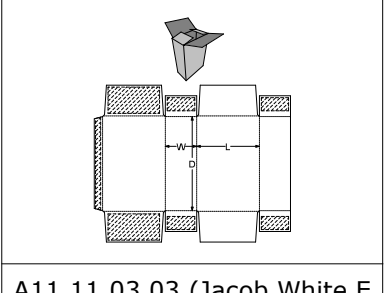
A11.20.03.01 - Tuck to Front Standard Skillet



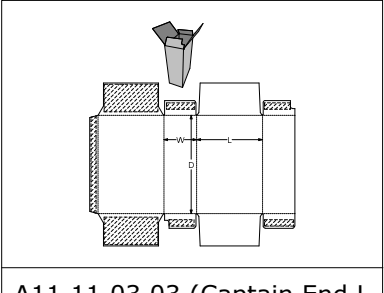
A11.11.03.03 (Skillet) - Overlapping Skillet



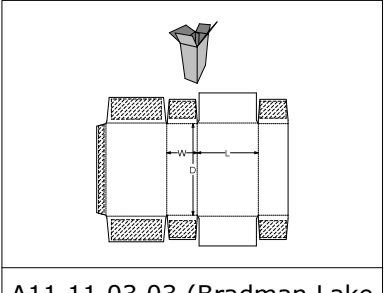
A11.11.03.03 (Skillet 2) - Die-Cut Version



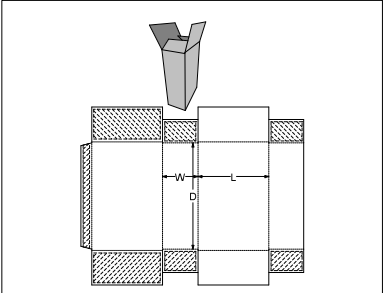
A11.11.03.03 (Jacob White End Load Skillet) - Jacob White End Load Skillet



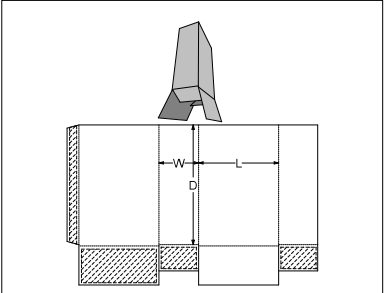
A11.11.03.03 (Captain End Load Skillet) - Captain End Load Skillet



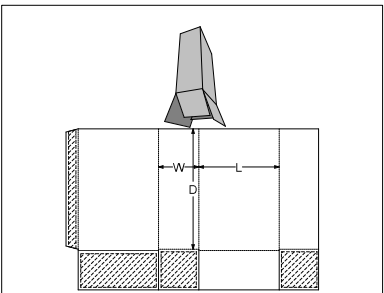
A11.11.03.03 (Bradman Lake End Load Skillet) - Bradman Lake End Load Skillet



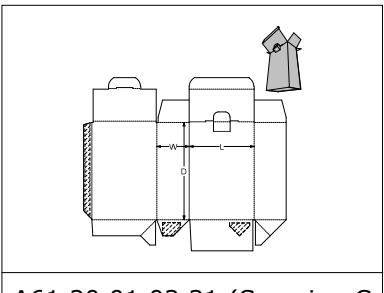
A11.11.03.03 - Square Flap Skillet



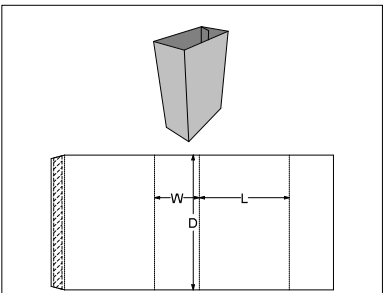
A11.01.03.00 - Open Ended Square Flap Skillet



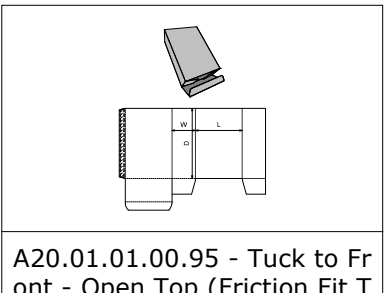
A10.01.03.00 - Open Ended Full Overlap Skillet



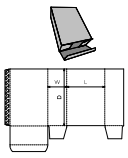
A61.20.01.03.31 (Securing Counterflap) - Double Tuck Full Crash Lock Base



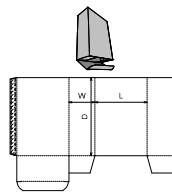
A01.01.00.00 - Open Ended Top and Base



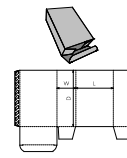
A20.01.01.00.95 - Tuck to Front - Open Top (Friction Fit Tuck, Friction Fit Tuck-In Flap, Friction Fit Dust Flaps)



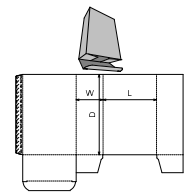
A20.01.01.00.94 - Tuck to Front - Open Top (Friction Fit Tuck, Friction Fit Tuck-In Flap, Friction Fit Dust Flaps, Magazine Slots Type A)



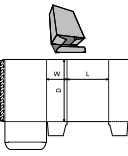
A20.01.01.00.93 - Tuck to Front - Open Top (Slit Lock Tuck, Uni-Tuck Flap, Full Angled Dust Flaps)



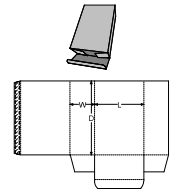
A20.01.01.00.92 - Tuck to Front - Open Top (Slit Lock Tuck, Uni-Tuck Flap, Full Angled Dust Flaps, Magazine Slots Type A)



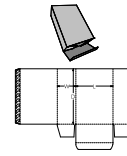
A20.01.01.00.91 - Tuck to Front - Open Top (Slit Lock Tuck, Uni-Tuck Flap, Slit Lock Dust Flaps)



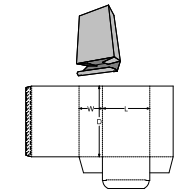
A20.01.01.00.90 - Tuck to Front - Open Top (Slit Lock Tuck, Uni-Tuck Flap, Slit Lock Dust Flaps, Magazine Slots Type A)



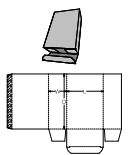
A20.01.03.00.95 - Tuck to Back - Open Top (Friction Fit Tuck, Friction Fit Tuck-In Flap, Friction Fit Dust Flaps)



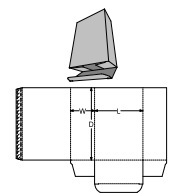
A20.01.03.00.94 - Tuck to Back - Open Top (Friction Fit Tuck, Friction Fit Tuck-In Flap, Friction Fit Dust Flaps, Magazine Slots Type A)



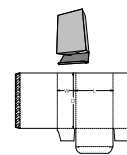
A20.01.03.00.93 - Tuck to Back - Open Top (Slit Lock Tuck, Uni-Tuck Flap, Full Angled Dust Flaps)



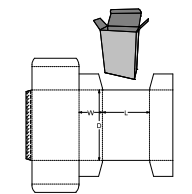
A20.01.03.00.92 - Tuck to Back - Open Top (Slit Lock Tuck, Uni-Tuck Flap, Full Angled Dust Flaps, Magazine Slots Type A)



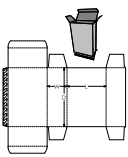
A20.01.03.00.91 - Tuck to Back - Open Top (Slit Lock Tuck, Uni-Tuck Flap, Slit Lock Dust Flaps)



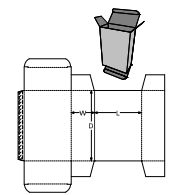
A20.01.03.00.90 - Tuck to Back - Open Top (Slit Lock Tuck, Uni-Tuck Flap, Slit Lock Dust Flaps, Magazine Slots Type A)



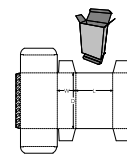
A20.20.01.01.95 - Aerotuck to Back (Friction Fit Tucks, Friction Fit Tuck-In Flaps, Friction Fit Dust Flaps)



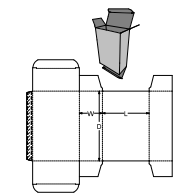
A20.20.01.01.94 - Aerotuck to Back (Friction Fit Tucks, Friction Fit Tuck-In Flaps, Friction Fit Dust Flaps, Magazine Slots Type A)



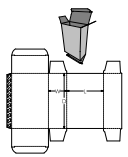
A20.20.01.01.93 - Aerotuck to Back (Slit Lock Tucks, Uni-Tuck Flaps, Full Angled Dust Flaps)



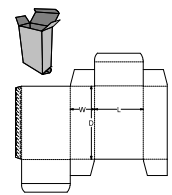
A20.20.01.01.92 - Aerotuck to Back (Slit Lock Tucks, Uni-Tuck Flaps, Full Angled Dust Flaps, Magazine Slots Type A)



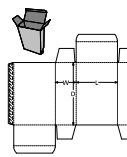
A20.20.01.01.91 - Aerotuck to Back (Slit Lock Tucks, Uni-Tuck Flaps, Slit Lock Dust Flaps)



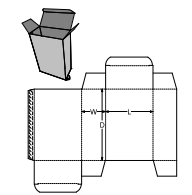
A20.20.01.01.90 - Aerotuck to Back (Slit Lock Tucks, Uni-Tuck Flaps, Slit Lock Dust Flaps, Magazine Slots Type A)



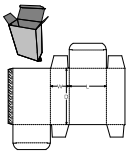
A20.20.01.03.95 - Inverted Reverse Tuck End (Friction Fit Tucks, Friction Fit Tuck-In Flaps, Friction Fit Dust Flaps)



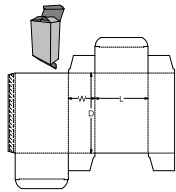
A20.20.01.03.94 - Inverted Reverse Tuck End (Friction Fit Tucks, Friction Fit Tuck-In Flaps, Friction Fit Dust Flaps, Magazine Slots Type A)



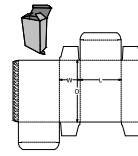
A20.20.01.03.93 - Inverted Reverse Tuck End (Slit Lock Tucks, Uni-Tuck Flaps, Full Angled Dust Flaps)



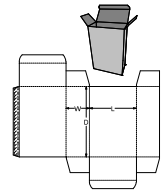
A20.20.01.03.92 - Inverted Reverse Tuck End (Slit Lock Tucks, Uni-Tuck Flaps, Full Angled Dust Flaps, Magazine Slots Type A)



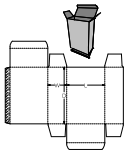
A20.20.01.03.91 - Inverted Reverse Tuck End (Slit Lock Tucks, Uni-Tuck Flaps, Slit Lock Dust Flaps)



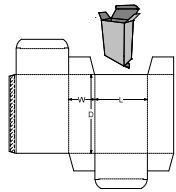
A20.20.01.03.90 - Inverted Reverse Tuck End (Slit Lock Tucks, Uni-Tuck Flaps, Slit Lock Dust Flaps, Magazine Slots Type A)



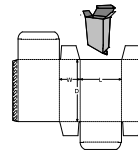
A20.20.03.01.95 - Reverse Tuck End (Friction Fit Tucks, Friction Fit Tuck-In Flaps, Friction Fit Dust Flaps)



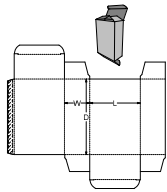
A20.20.03.01.94 - Reverse Tuck End (Friction Fit Tucks, Friction Fit Tuck-In Flaps, Friction Fit Dust Flaps, Magazine Slots Type A)



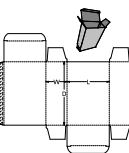
A20.20.03.01.93 - Reverse Tuck End (Slit Lock Tucks, Uni-Tuck Flaps, Full Angled Dust Flaps)



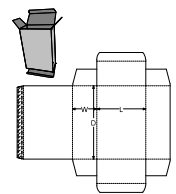
A20.20.03.01.92 - Reverse Tuck End (Slit Lock Tucks, Uni-Tuck Flaps, Full Angled Dust Flaps, Magazine Slots Type A)



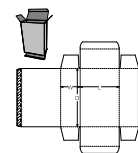
A20.20.03.01.91 - Reverse Tuck End (Slit Lock Tucks, Uni-Tuck Flaps, Slit Lock Dust Flaps)



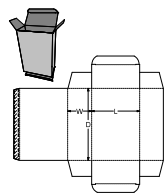
A20.20.03.01.90 - Reverse Tuck End (Slit Lock Tucks, Uni-Tuck Flaps, Slit Lock Dust Flaps, Magazine Slots Type A)



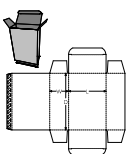
A20.20.03.03.95 - Same Panel Tuck (Friction Fit Tucks, Friction Fit Tuck-In Flaps, Friction Fit Dust Flaps)



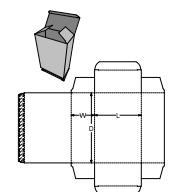
A20.20.03.03.94 - Same Panel Tuck (Friction Fit Tucks, Friction Fit Tuck-In Flaps, Friction Fit Dust Flaps, Magazine Slots Type A)



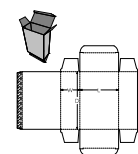
A20.20.03.03.93 - Same Panel Tuck (Slit Lock Tucks, Uni-Tuck Flaps, Full Angled Dust Flaps)



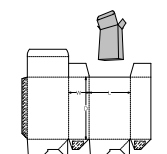
A20.20.03.03.92 - Same Panel Tuck (Slit Lock Tucks, Uni-Tuck Flaps, Full Angled Dust Flaps, Magazine Slots Type A)



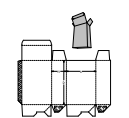
A20.20.03.03.91 - Same Panel Tuck (Slit Lock Tucks, Uni-Tuck Flaps, Slit Lock Dust Flaps)



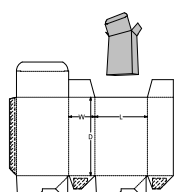
A20.20.03.03.90 - Same Panel Tuck (Slit Lock Tucks, Uni-Tuck Flaps, Slit Lock Dust Flaps, Magazine Slots Type A)



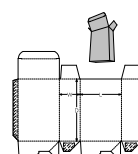
A60.20.00.01.95 - Tuck to Front Crash Lock Base (Friction Fit Tucks, Friction Fit Tuck-In Flaps, Friction Fit Dust Flaps)



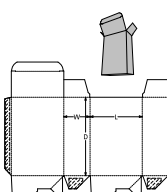
A60.20.00.01.94 - Tuck to Front Crash Lock Base (Friction Fit Tucks, Friction Fit Tuck-In Flaps, Friction Fit Dust Flaps, Magazine Slots Type A)



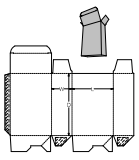
A60.20.00.01.93 - Tuck to Front Crash Lock Base (Slit Lock Tucks, Uni-Tuck Flaps, Full Angled Dust Flaps)



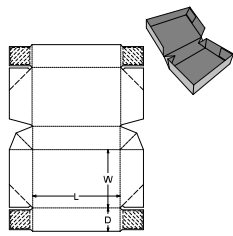
A60.20.00.01.92 - Tuck to Front Crash Lock Base (Slit Lock Tucks, Uni-Tuck Flaps, Full Angled Dust Flaps, Magazine Slots Type A)



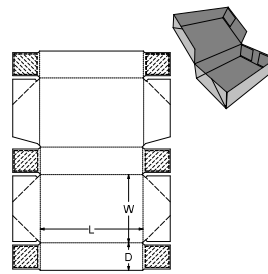
A60.20.00.01.91 - Tuck to Front Crash Lock Base (Slit Lock Tucks, Uni-Tuck Flaps, Slit Lock Dust Flaps)



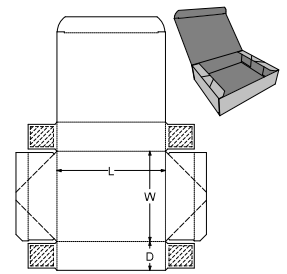
**A60.20.00.01.90** - Tuck to Front Crash Lock Base (Slit Lock Tucks, Uni-Tuck Flaps, Slit Lock Dust Flaps, Magazine Slots Type A)



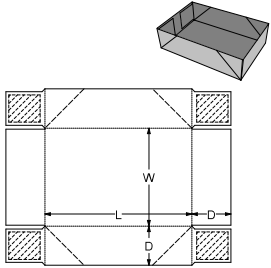
**B40.23.00.54** - Four Corner Hinged Lid with Webbed Corners



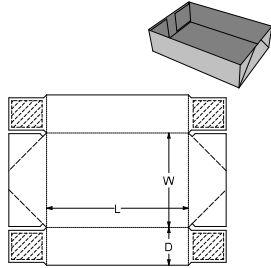
**B40.22.00.61** - 6 Point Glued Tray with Hinged Lid



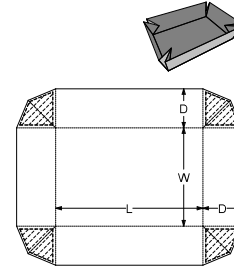
**B40.22.00.50** - 4 Point Glued Hinged Lid



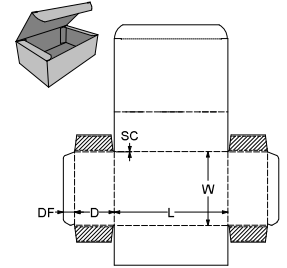
**B40.22.00.00 Style B** - Outfold Tray Style B



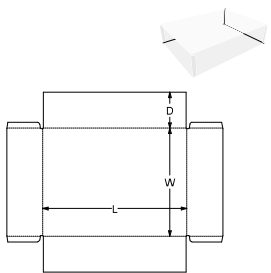
**B40.22.00.00 Style A** - Infold Tray, 4 Point Glued Style A



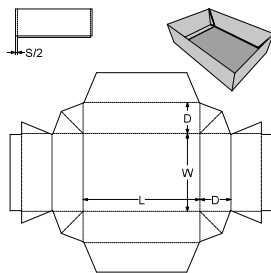
**B40.21.00.00** - Glued Tray With 4 Webbed Corners



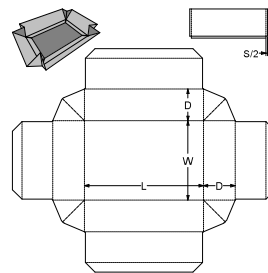
**B40.20.82.50** - Glued Tray with Tuck-in Closure



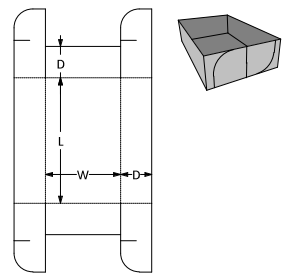
**B40.20.00.00** - For PET, PP type plastic (Lid or Tray)



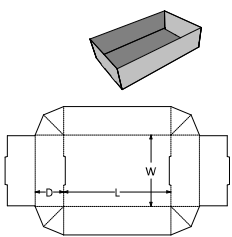
**B31.02.00.00** - Turn Over Sides Tray With End Stops



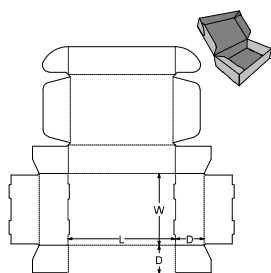
**B30.04.00.00** - Turn Over Sides Tray With Folded Flaps



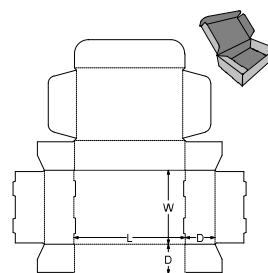
**B20.05.00.00** - Open Tray with Scissor Lock



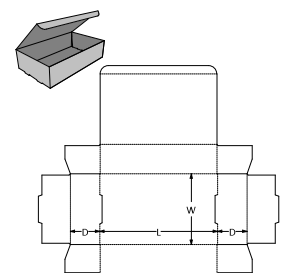
**B20.04.00.00** - Turn Over Ends Tray With Folded Corners



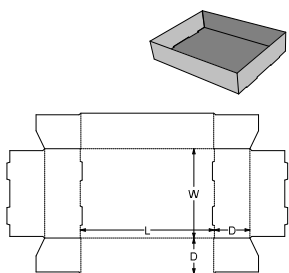
**B20.01.82.53** - Turn Over Hinged Lid B Style B



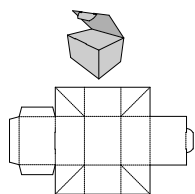
**B20.01.82.50** - Turn Over Hinged Lid A Style A



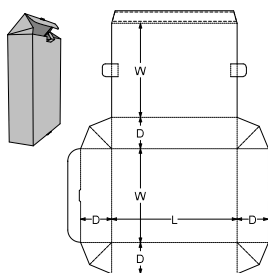
**B20.01.00.50** - Turn Over End Tray, Tuck-in Flap Lid



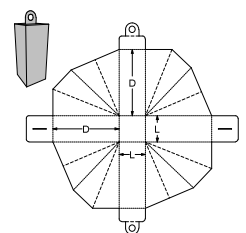
**B20.01.00.00** - Turn Over End Tray



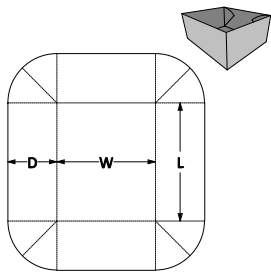
**B15.21.00.53.31** - Tray, Webbed Corners, 3 Winged Flap Cover, With Securing Counterflap



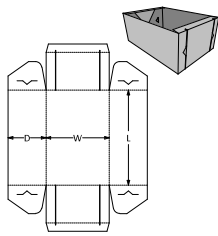
**B15.11.82.50.33** - Tray with two Tuck Locks



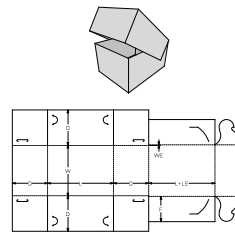
**B15.11.00.00.84** - Tray, 4 Side Panels Webbed, Carrying Handle, 2 Tucks



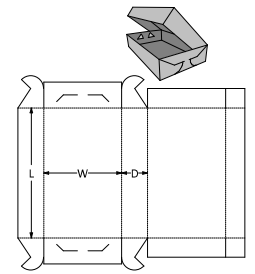
B15.11.00.00 - Tray with Webbed Corners



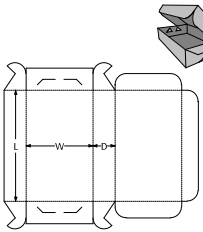
B15.07.82.00 - Tray, Side Flaps with Vertical Claw Locks



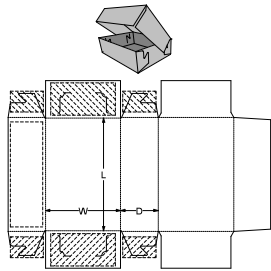
B15.06.00.60 Cookies Case - Unglued Tray, Single Walls, Claw Lock System



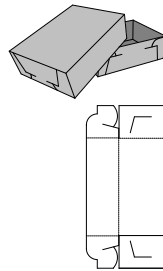
B15.06.00.60 - Claw Locks And Lid With Square Flaps



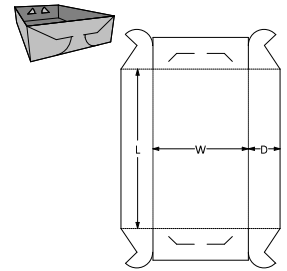
B15.06.00.53 Style A - Claw Locks And Lid With Rounded Flaps



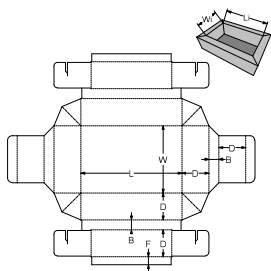
B15.06.00.53 - Kliklok Top Load Skillet



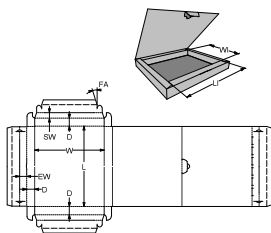
B15.06.00.00 Style B - Open Tray With Claw Side Locks



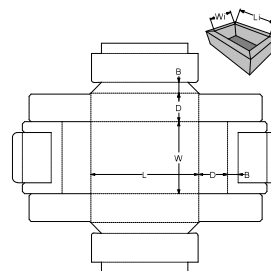
B15.06.00.00 Style A - Open Tray With Claw Locks



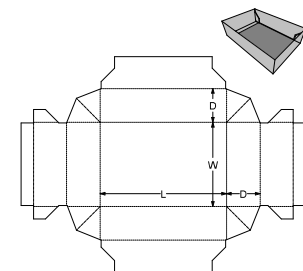
B14.05.00.00 - Buffer Wall Tray with Webbed Corners



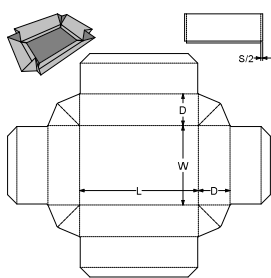
B14.03.00.51 - Buffer Wall Tray with Doubled Walled Tuck-in Flap Cover System



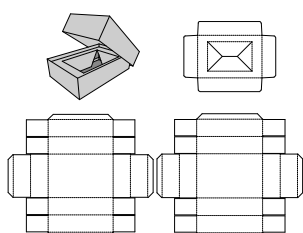
B14.02.00.00 - Buffer Wall Tray



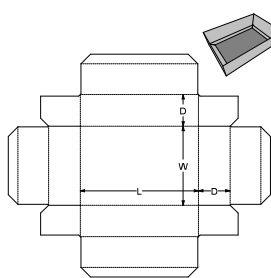
B11.02.00.00 - Shirt Box Style



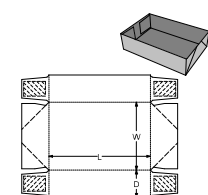
B10.04.00.00 - Webbed Self Locking Tray



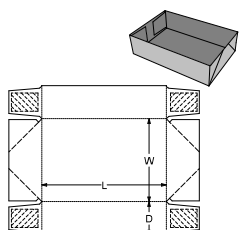
B10.02.00.00 (Bottom with Insert and Lid) - Standard Self Locking Tray, Lid, Insert



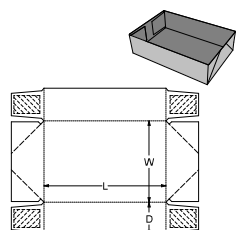
B10.02.00.00 - Standard Self Locking Tray



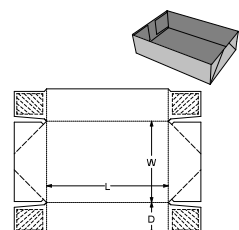
B40.22.00.00.94 - Infold Tray, 4 Point Glued, Angled Side Flaps with Outside Fillet and Angled Dog Leg



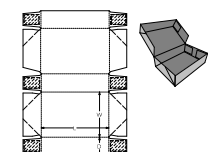
B40.22.00.00.93 - Infold Tray, 4 Point Glued, Angled Side Flaps with Outside Fillet



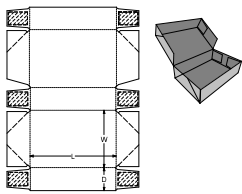
B40.22.00.00.92 - Infold Tray, 4 Point Glued, Angled Side Flaps



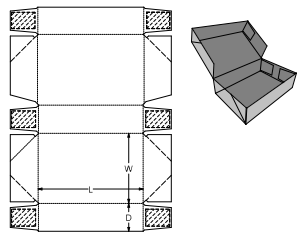
B40.22.00.00.91 - Infold Tray, 4 Point Glued, Angled Slot Flaps



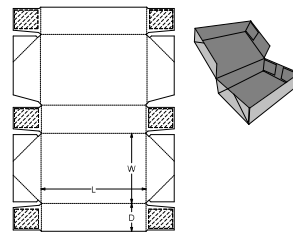
B40.22.00.61.94 - 6 Point Glued Tray with Hinged Lid, Angled Side Flaps with Outside Fillet and Angled Dog Leg



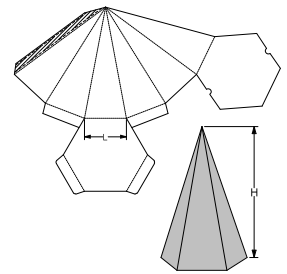
B40.22.00.61.93 - 6 Point Glued Tray with Hinged Lid, Angled Side Flaps with Outside Fillet



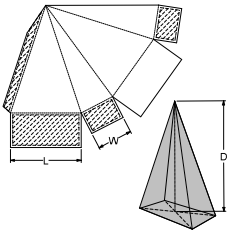
B40.22.00.61.92 - 6 Point Glued Tray with Hinged Lid, Angled Side Flaps



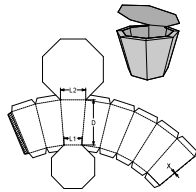
B40.22.00.61.91 - 6 Point Glued Tray with Hinged Lid, Angled Slots



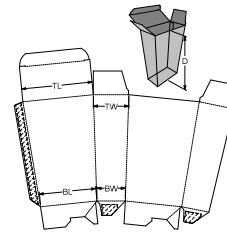
C30.40.20.01 - Hexagonal Pyramid Panel Tuck Bottom



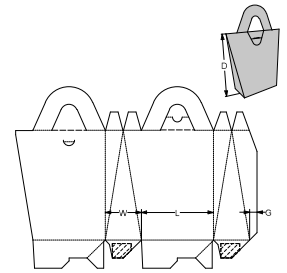
C30.20.10.01 - Rectangular Base Pyramid with Square Flaps



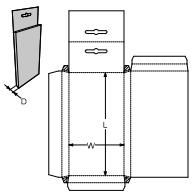
C20.50.11.11 - Pyramid Stub, Eight Cornered Basis, Reduced Flap Size - 1 Flap Fully Covering



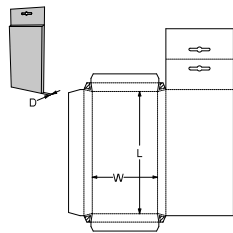
C20.20.60.20 - Tapered Carton, Crash Lock Base, Tuck to Front Top



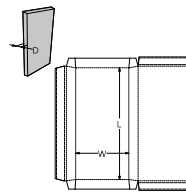
C20.20.60.00 (Basket) - Crash Lock Base



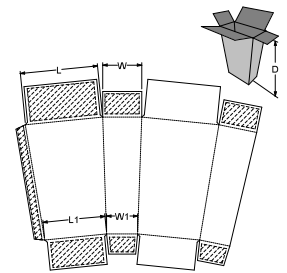
C20.20.20.21 Style B - Pyramid stub 4 corner basis, reversed, extended back panel



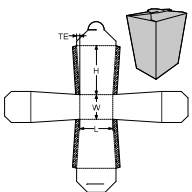
C20.20.20.21 Style A - Pyramid stub 4 corner basis, extended back panel



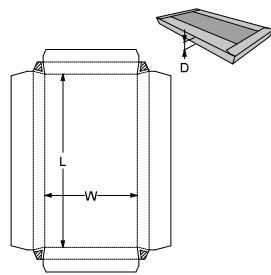
C20.20.10.10 Style A - Pyramid stub 4 corner basis, full overlapping closure system



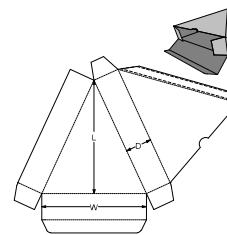
C20.20.10.10 - Tapered Skill Top and Bottom



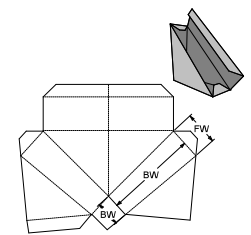
C20.20.01.10 - Glued Pyramid Stub, 4 Cornered Basis, Full Overlapping Top With Lock



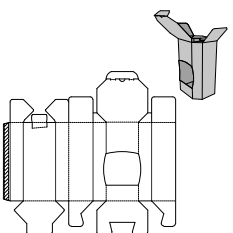
C20.20.00.20 - Tray single walled with 4 glued corners



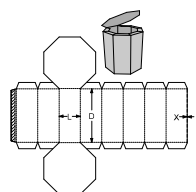
C20.10.20.01 - Triangular Single Walled with End Tuck-in Closure



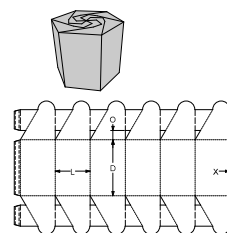
C20.10.11.01 - Triangular with Panel Tuck Closure (Sandwich Pack)



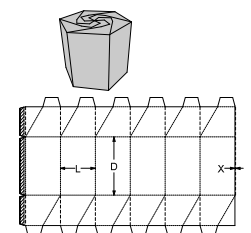
C10.50.55.20 - Octahedral box, Snap Lock Base, Tuck in Flap closure system, Cutout



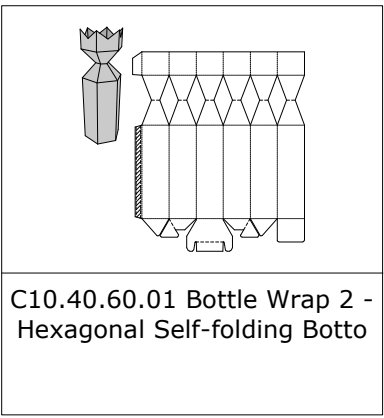
C10.50.11.11 - Eight Cornered Basis, Reduced Flap Size - 1 Flap Fully Covering



C10.40.90.90 Style B - Six Cornered Basis, Rosette Closure System



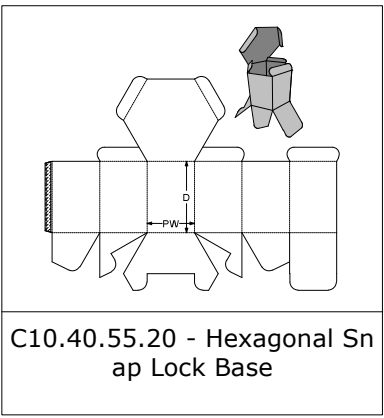
C10.40.90.90 Style A - Six Cornered Basis, Rosette Closure System



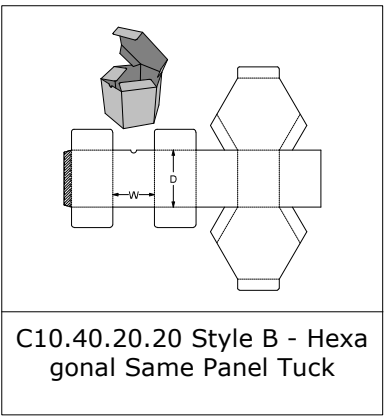
**C10.40.60.01 Bottle Wrap 2 - Hexagonal Self-folding Botto**



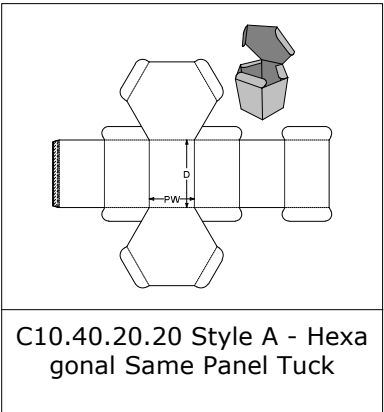
**C10.40.60.01 Bottle Wrap 1 - Hexagonal Self-folding Botto**



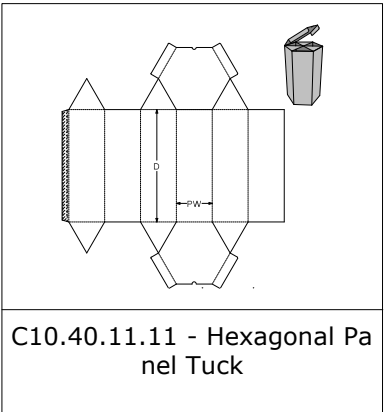
**C10.40.55.20 - Hexagonal Snap Lock Base**



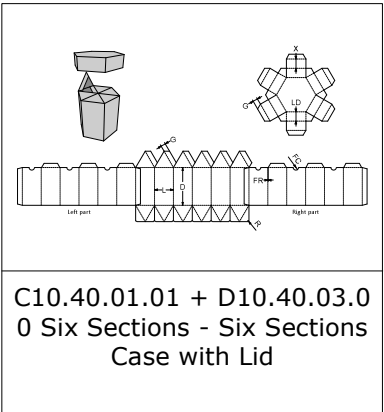
**C10.40.20.20 Style B - Hexagonal Same Panel Tuck**



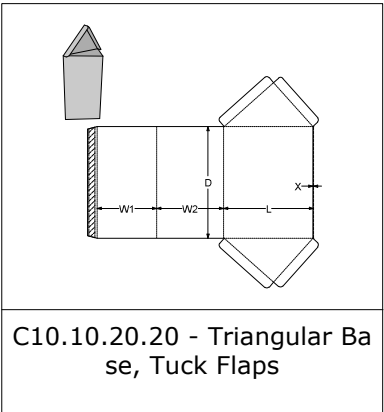
**C10.40.20.20 Style A - Hexagonal Same Panel Tuck**



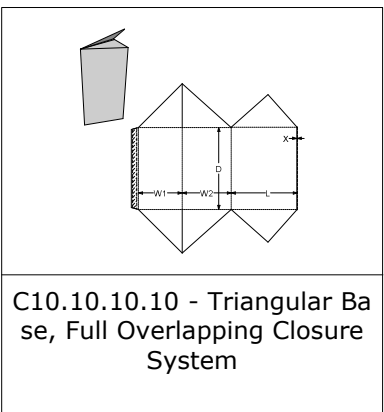
**C10.40.11.11 - Hexagonal Panel Tuck**



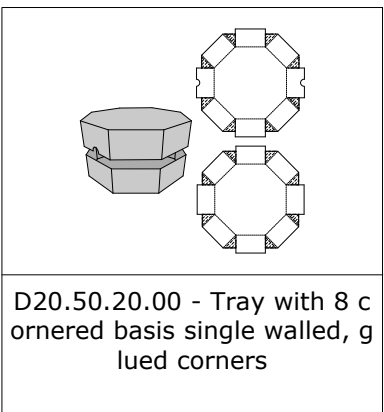
**C10.40.01.01 + D10.40.03.00 Six Sections - Six Sections Case with Lid**



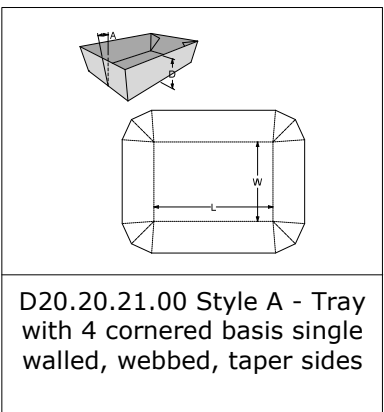
**C10.10.20.20 - Triangular Base, Tuck Flaps**



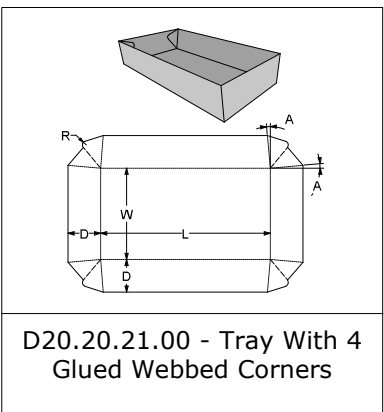
**C10.10.10.10 - Triangular Base, Full Overlapping Closure System**



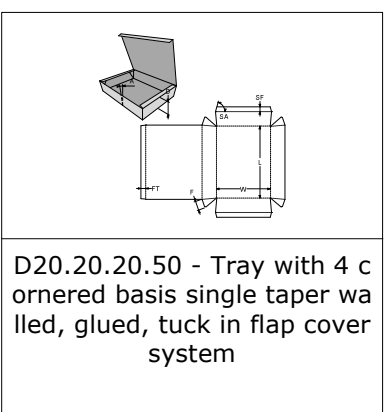
**D20.50.20.00 - Tray with 8 cornered basis single walled, glued corners**



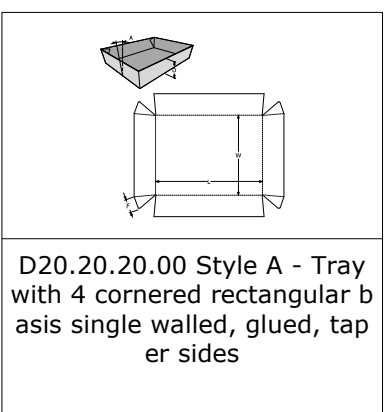
**D20.20.21.00 Style A - Tray with 4 cornered basis single walled, webbed, taper sides**



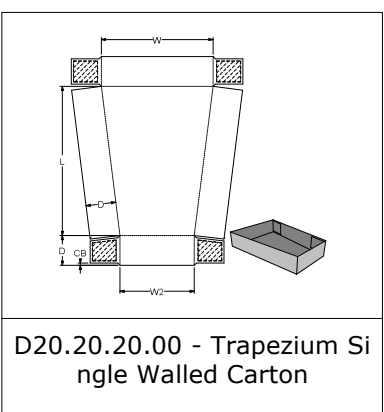
**D20.20.21.00 - Tray With 4 Glued Webbed Corners**



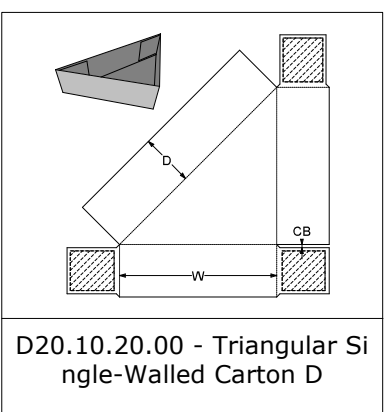
**D20.20.20.50 - Tray with 4 cornered basis single taper walled, glued, tuck in flap cover system**



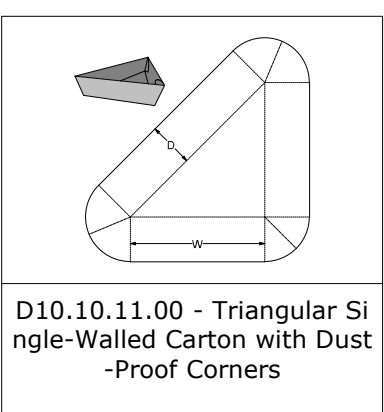
**D20.20.20.00 Style A - Tray with 4 cornered rectangular basis single walled, glued, taper sides**



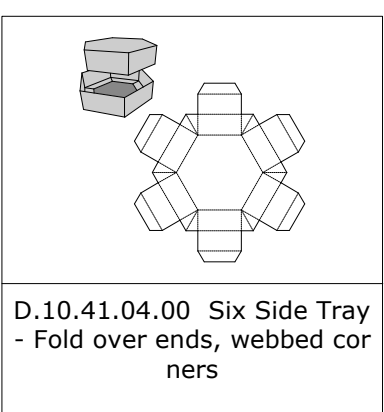
**D20.20.20.00 - Trapezium Single Walled Carton**



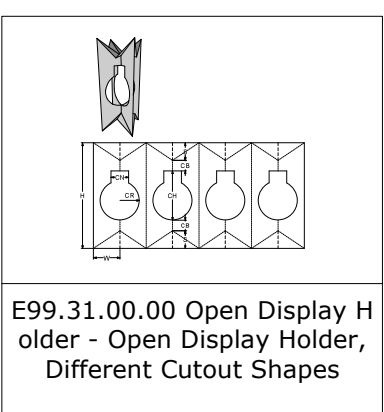
**D20.10.20.00 - Triangular Single-Walled Carton D**



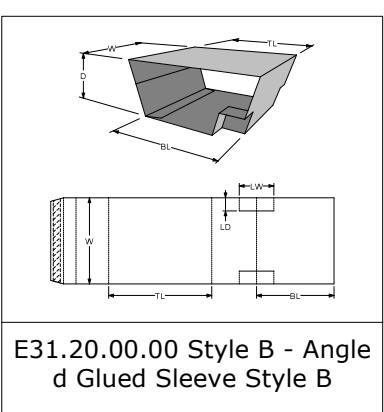
**D10.10.11.00 - Triangular Single-Walled Carton with Dust-Proof Corners**



**D.10.41.04.00 Six Side Tray - Fold over ends, webbed corners**

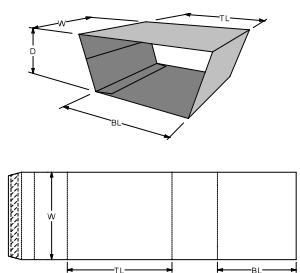


**E99.31.00.00 Open Display Holder - Open Display Holder, Different Cutout Shapes**

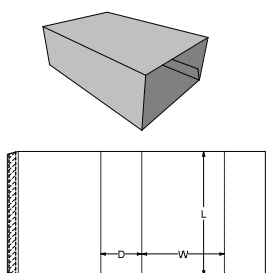


**E31.20.00.00 Style B - Angled Glued Sleeve Style B**

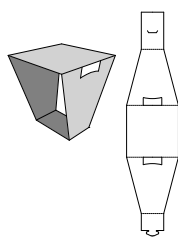




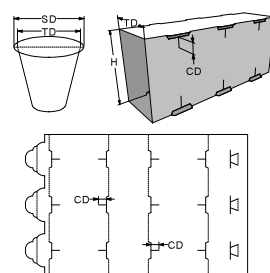
E31.20.00.00 Style A - Angle d Glued Band Style A



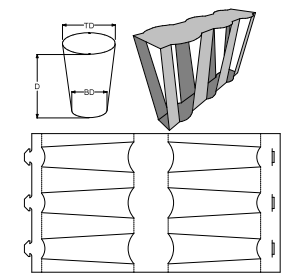
E30.20.00.00 - Sleeve With/ Without Thumb Cuts



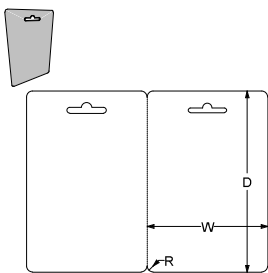
E14.30.00.00 Cup Wrap - Cup Wrap With Lock at Bottom



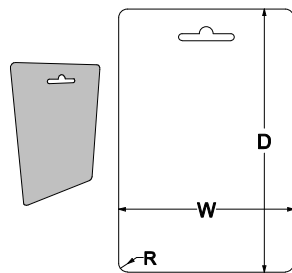
E10.30.00.00 - Locked Wrap Around, For Single Row



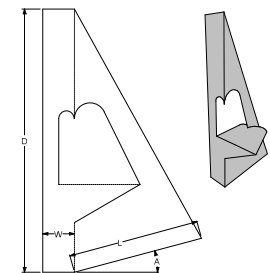
E10.21.00.00 - Non-Glued Wrap



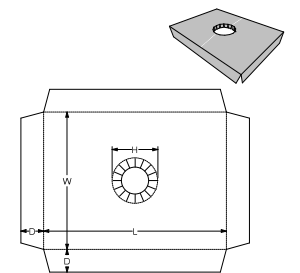
F80.52.00.00 - Blister Card Folding Carton Folded



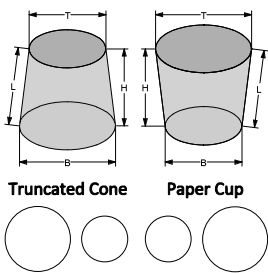
F80.51.00.00 - Blister Card Folding Carton



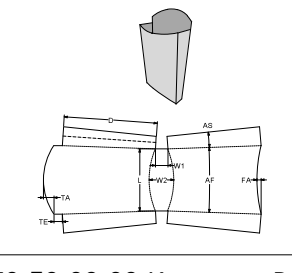
F80.41.00.00 - Vertical Support Strut



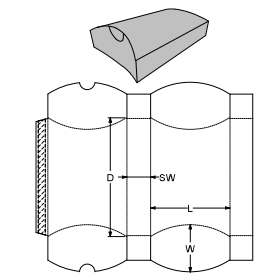
F80.03.00.00 - 4 Sided Platform with Centre Hole



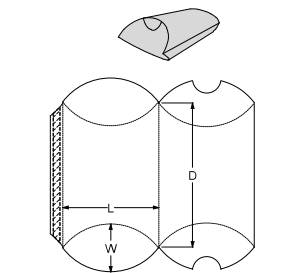
F70.62.00.00 Cone Paper & Cup - Truncated Cone



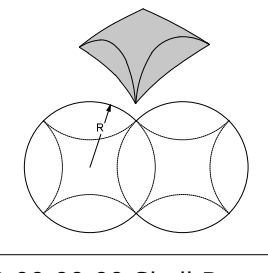
F70.50.00.00 Kangaroo Pouch - Fast Food Pillow Container



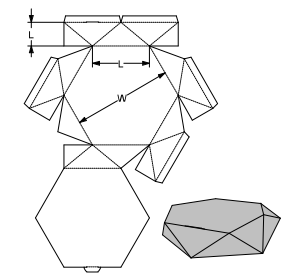
F70.01.00.00 Style B - Pillow Pack Side Walls Style B



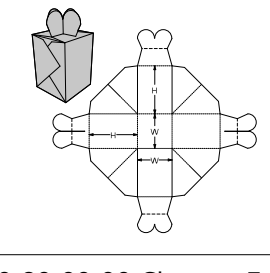
F70.01.00.00 Style A - Pillow Pack Style A



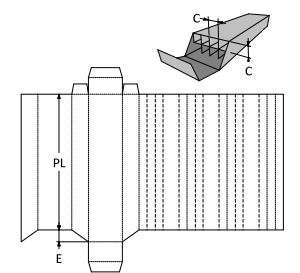
F70.00.00.00 Shell Box - Folding Carton with Curved Panels



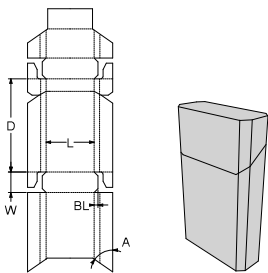
F60.82.00.00 - Gift Box With Hexagonal Base



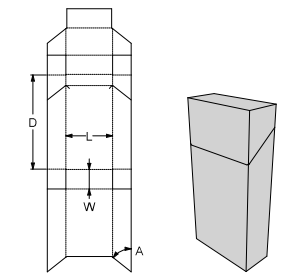
F60.80.00.00 Clover - Folder Cartons with Straight Surfaces, Top Clover Lock



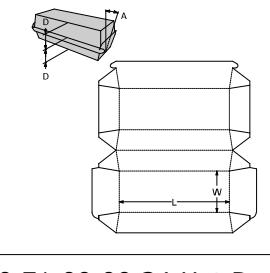
F60.42.00.00. Pencil Box - Two rows, multi cells.



F60.11.00.00 Style B - Cigarette Carton



F60.11.00.00 Style A - Cigarette Carton



F40.71.00.00.34 Hot Dog Box - Burger Box, Clamshell With Clawlock Device

F40.71.00.00.34 Burger Box Style D - Burger Box, Clamshell with Snap Lock

F40.71.00.00.34 Burger Box Style C - Burger Box, Clamshell With Clawlock Device, Rounded Slots

F40.71.00.00.34 Burger Box Style B - Burger Box, Clamshell With Clawlock Device, Rectangular Slots

F40.71.00.00.34 Burger Box Style A - Burger Box, Clamshell With Clawlock Device

F40.71.00.00 Burger Box (Classic) - Burger Box, Clamshell Without Locks

F40.41.01.00 Container - Container With Bevelled Corners, Top Flaps

F40.10.00.00 Dodecahedron - Polygonal, Dodecahedron

F30.10.00.00 Style B - Valentine Gift Box - Snap Lock Base

F30.10.00.00 Style A - Valentine Gift Box - End Tuck-in Closure

F30.00.20.00 Cake Box - Triangular Panels, Flap with Tuck Closure

F30.00.11.11 - Triangular Faces, Reduced Flap Size, 1 Flap Fully Covering

F20.37.00.00 - Rounded End

F20.36.00.00 - Rounded Ends and Curved Top

F20.01.00.00 - Top & Base with Curved Top Panel

Twisting Column - Top & Base Crash Lock Top & Base

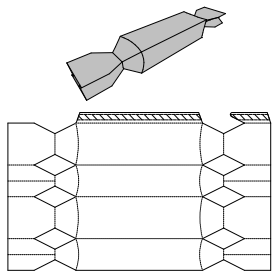
Triangular Gift Box 1 - Closed Tray, 4 Corner Triangular Shape

Tetrahedron - Tetrahedron

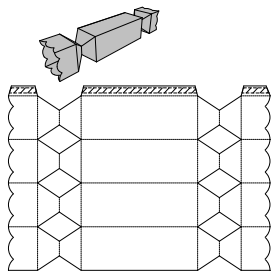
Tapered Gift Box - Gable Top Closure, Crash Lock Base (A60.75.00.01), "Bag Box"

Tamper Proof Box 1 - Reverse Tuck End Style Pill/Vial Pack (A20.20.03.01)

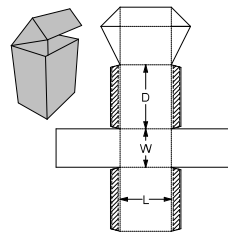
Sweet Box 3 - "Christmas Cracker" (A82.82.00.00)



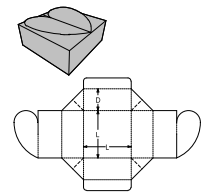
Sweet Box 2 - "Christmas Cracker" (A83.83.00.00)



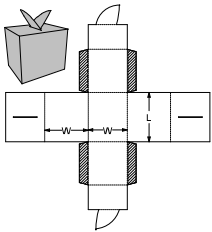
Sweet Box 1 - "Christmas Cracker" (A83.83.00.00)



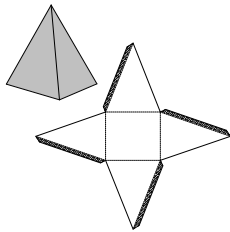
Square Gift Box 3 - Closed Tray, 4 Point Glued with Flip-Top (B40.20.00.60.36)



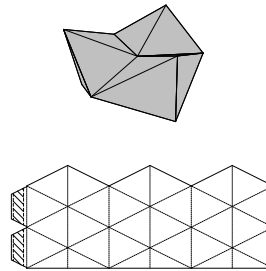
Square Gift Box 2 - Closed Tray, 4 Point Glued with Heart Shaped Lock (B15.11.82.55)



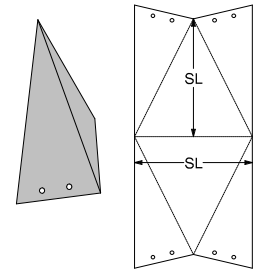
Square Gift Box 1 - Closed Tray, 4 Point Glued with Top Ear (B40.20.82.63)



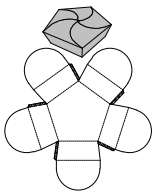
Rectangular Pyramid Box - Rectangular Pyramid Box (C30.20.01.01)



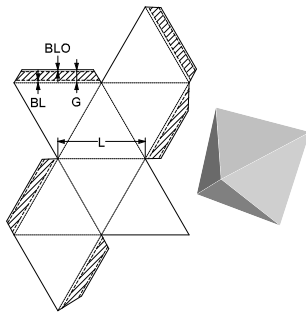
Polyhedron Shape 2 - Trifle Tetrahedrons



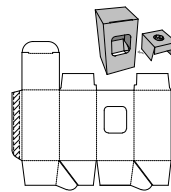
Polyhedron Shape 1 - Tetrahedron Box



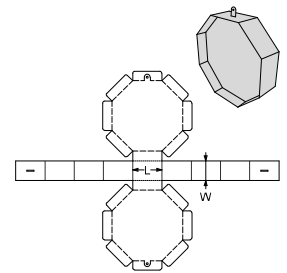
Pentahedral Gift Box - Closed Tray, 5 Point Glued Pyramid with Rosette Closure (D20.30.01.63.90)



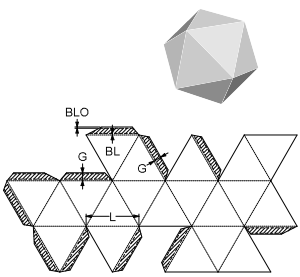
Octahedron - Octahedron



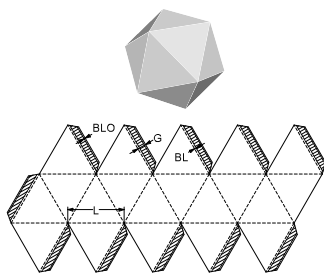
Light Bulb Box - Tuck-in Flap Top, Open Ended Glued Bottom (A99.20.00.01.99) + Insert (F80.03.00.00)



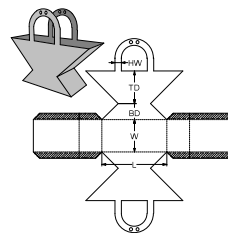
Janus-Faced - Hexagonal Two-sides Display, Hanged



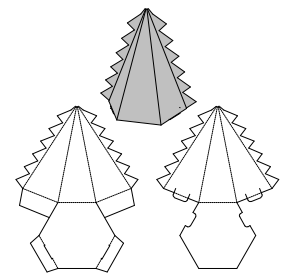
Icosahedron 2 - Icosahedron



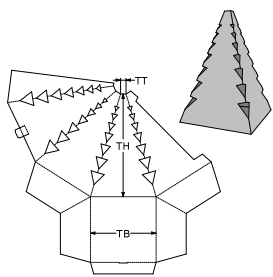
Icosahedron 1 - Icosahedron



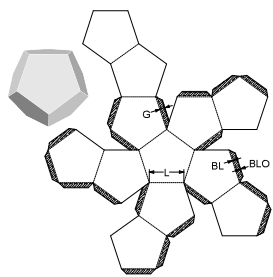
Hourglass Gift Box - Hourglass Basket with Carry Handles



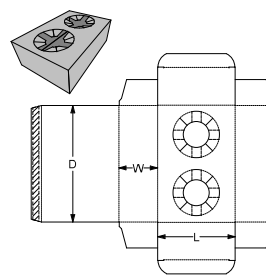
Holiday Tree 2 - Holiday Tree (C30.40.20.01)



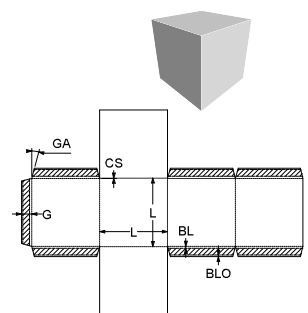
Holiday Tree 1 - Holiday Tree (C30.20.20.01)



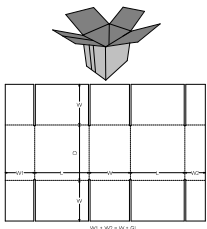
Dodecahedron - Dodecahedron



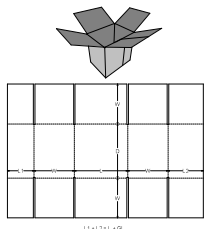
Cup Holder - Platform with 2 Holes (A20.20.03.03.99)



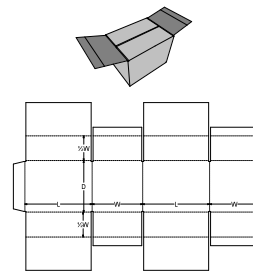
Cube 1 - Cube 1



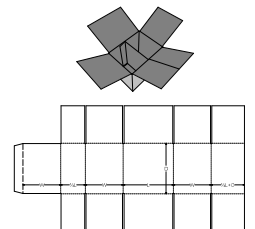
**FEFCO 0231 - Full Overlapping Container, Centre Seam on Ends**



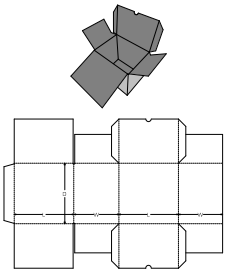
**FEFCO 0230 - Full Overlapping Container, Centre Seam on Sides**



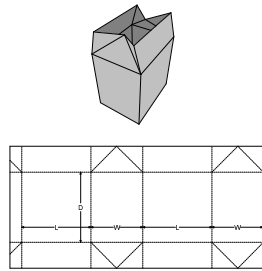
**FEFCO 0229 - All Flaps Meet, Centre Partition**



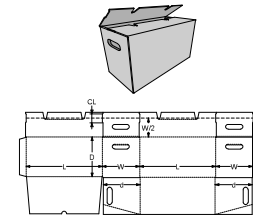
**FEFCO 0228 - Full Overlapping Container, Centre Seam, Centre Divider**



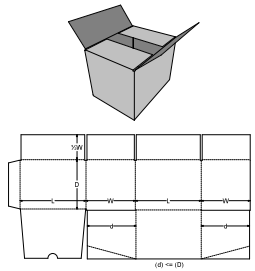
**FEFCO 0227 - Slotted Tuck Top and Base**



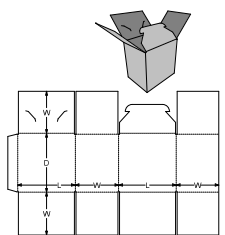
**FEFCO 0226 - Bellows Style Container**



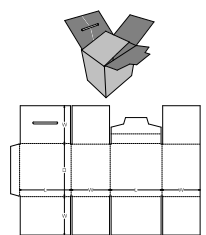
**FEFCO 0225 Transportation Container - File Base Attic Container - RSC**



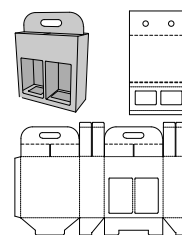
**FEFCO 0225 - File Base Slotted Container - RSC**



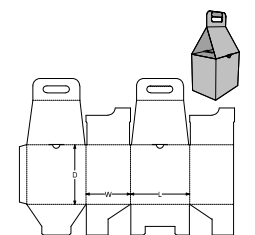
**FEFCO 0218-1 - Recloseable Top, Full Overlapping Slotted Base - FOL**



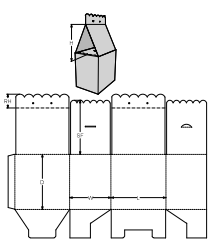
**FEFCO 0218 - Recloseable Top, Full Overlapping Slotted Base - FOL**



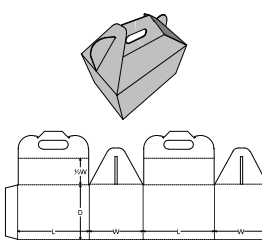
**FEFCO 0217-1 - Carry Handle Top, Envelope Base, Insert for 2 Bottles**



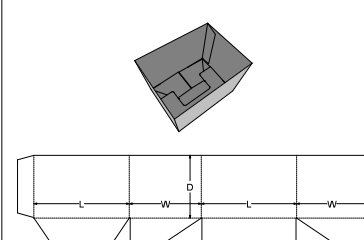
**FEFCO 0217 Roof Top - Roof Closure System, Envelope Base**



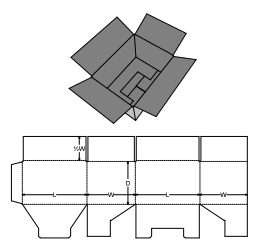
**FEFCO 0217 Hanging Top - Roof Hanging Top, Envelope Base**



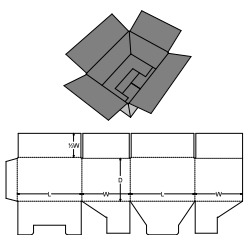
**FEFCO 0217 - Carry Handle Top, Envelope Base**



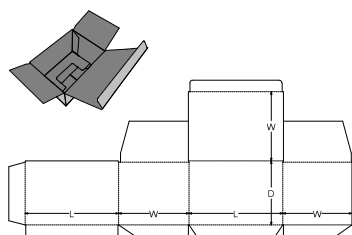
**FEFCO 0216-2 - Envelope Base**



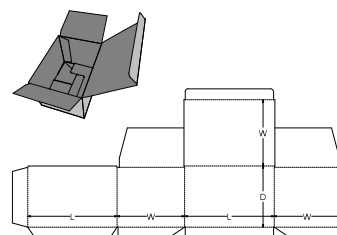
**FEFCO 0216-1 - Regular Slotted Top, Envelope Base - RSC**



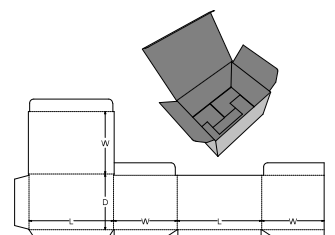
**FEFCO 0216 - Regular Slotted Top, Envelope Base - RSC**



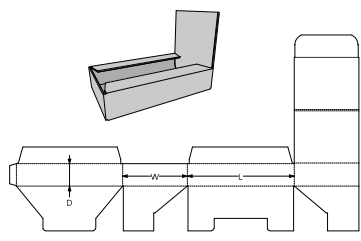
**FEFCO 0215-3 - Tuck to Back Top, Envelope Base**



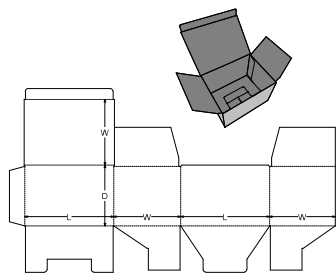
**FEFCO 0215-2 - Tuck to Back Top, Envelope Base**



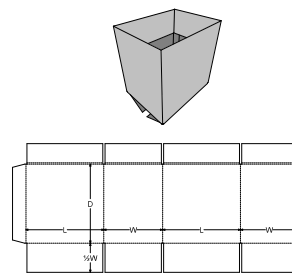
**FEFCO 0215-1 - Tuck to Front Top, Envelope Base**



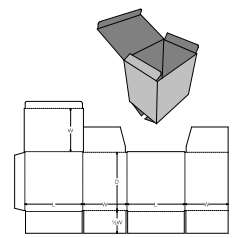
FEFCO 0215 Box-Display - Box - Display, Envelope Base



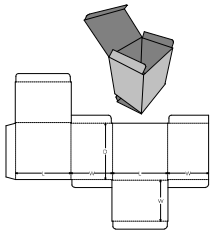
FEFCO 0215 - Tuck to Front Top, Envelope Base



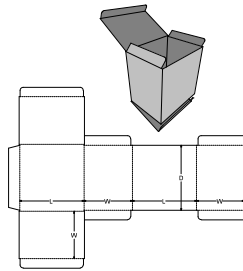
FEFCO 0214 - Roll Over Top Slotted Container - RSC



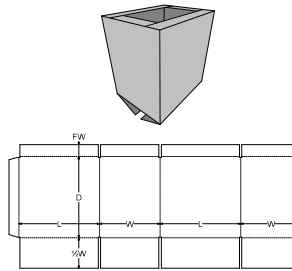
FEFCO 0212 - Tuck to Front Top, Regular Slotted Base - RSC



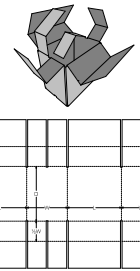
FEFCO 0211 - Reverse Tuck End, Tuck to Front Top, Tuck to Back Base



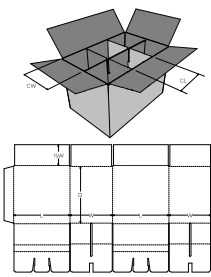
FEFCO 0210 - Aeroplane Tuck, Tuck to Front Container



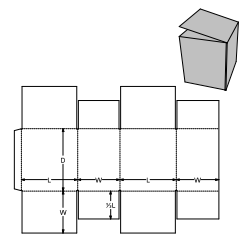
FEFCO 0209 - Flange Top, Regular Slotted Base - RSC



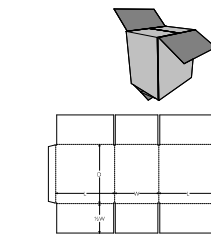
FEFCO 0208 - Slotted Containers with Holders



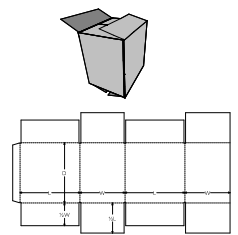
FEFCO 0207 - Slotted Container with Dividers - RSC



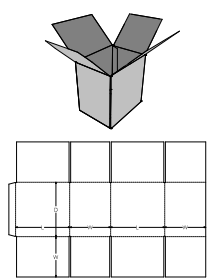
FEFCO 0206 - Outer Flaps Fully Overlap, Inner Flaps Meet - SFF



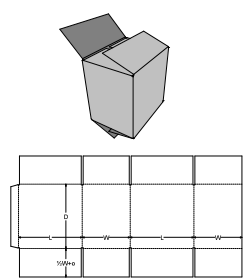
FEFCO 0205 - Outer Flaps Partly Overlap, Inner Flaps Meet - CSO



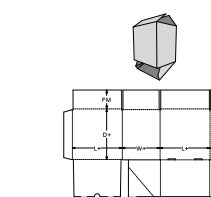
FEFCO 0204 - All Flaps Meet Slotted Container - AFM - CSC



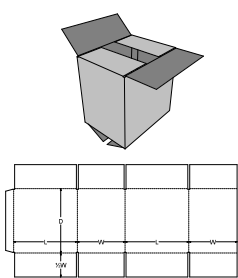
FEFCO 0203 - Full Overlap Slotted Container - FOL



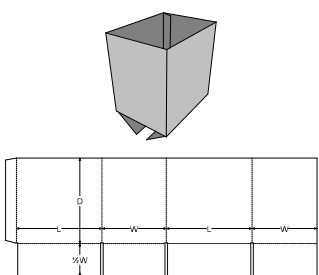
FEFCO 0202 - Overlap Slotted Container - OSC



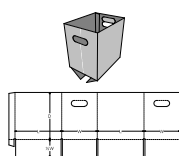
FEFCO 0201 Swing-Type Bottom - Slotted Container - RSC, With Swing-Type Bottom



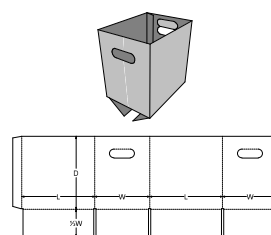
FEFCO 0201 - Regular Slotted Container - RSC



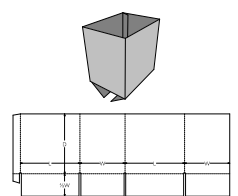
FEFCO 0200 - Half Slotted Container - HSC



FEFCO 0200-25 - Half Slotted Container - HSC (die-cut variation with extended glue flap at bottom and with hand holes)

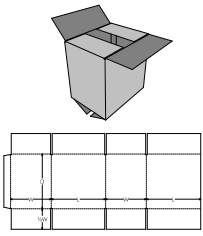


FEFCO 0200-24 - Half Slotted Container - HSC (die-cut variation with hand holes)

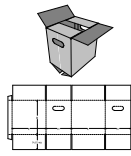


FEFCO 0200-21 - Half Slotted Container - HSC (die-cut variation with extended glue flap at bottom)

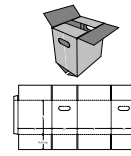




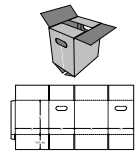
FEFCO 0201-10 - Regular Slotted Container - RSC (slotted variation)



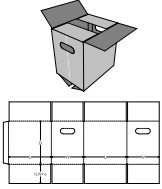
FEFCO 0202-27 - Overlap Slotted Container - OSC (die-cut variation with extended glue flap at top & bottom and with hand holes)



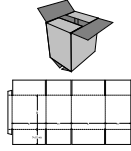
FEFCO 0202-26 - Overlap Slotted Container - OSC (die-cut variation with extended glue flap at top and with hand holes)



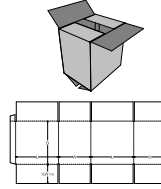
FEFCO 0202-25 - Overlap Slotted Container - OSC (die-cut variation with extended glue flap at bottom and with hand holes)



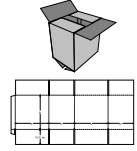
FEFCO 0202-24 - Overlap Slotted Container - OSC (die-cut variation with hand holes)



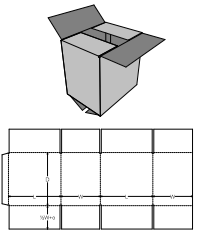
FEFCO 0202-23 - Overlap Slotted Container - OSC (die-cut variation with extended glue flap at top & bottom)



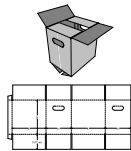
FEFCO 0202-22 - Overlap Slotted Container - OSC (die-cut variation with extended glue flap at top)



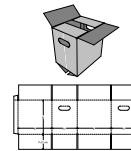
FEFCO 0202-21 - Overlap Slotted Container - OSC (die-cut variation with extended glue flap at bottom)



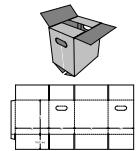
FEFCO 0202-20 - Overlap Slotted Container - OSC (die-cut variation)



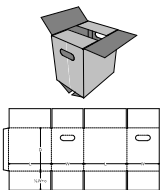
FEFCO 0202-17 - Overlap Slotted Container - OSC (slotted variation with extended glue flap at top & bottom and with hand holes)



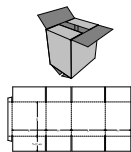
FEFCO 0202-16 - Overlap Slotted Container - OSC (slotted variation with extended glue flap at top and with hand holes)



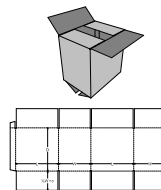
FEFCO 0202-15 - Overlap Slotted Container - OSC (slotted variation with extended glue flap at bottom and with hand holes)



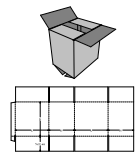
FEFCO 0202-14 - Overlap Slotted Container - OSC (slotted variation with hand holes)



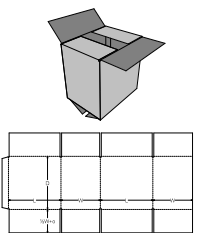
FEFCO 0202-13 - Overlap Slotted Container - OSC (slotted variation with extended glue flap at top & bottom)



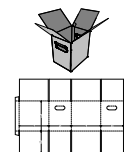
FEFCO 0202-12 - Overlap Slotted Container - OSC (slotted variation with extended glue flap at top)



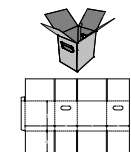
FEFCO 0202-11 - Overlap Slotted Container - OSC (slotted variation with extended glue flap at bottom)



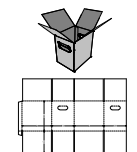
FEFCO 0202-10 - Overlap Slotted Container - OSC (slotted variation)



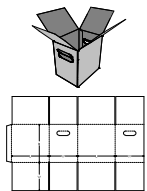
FEFCO 0203-27 - Full Overlap Slotted Container - FOL (die-cut variation with extended glue flap at top & bottom and with hand holes)



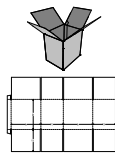
FEFCO 0203-26 - Full Overlap Slotted Container - FOL (die-cut variation with extended glue flap at top and with hand holes)



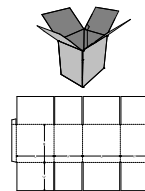
FEFCO 0203-25 - Full Overlap Slotted Container - FOL (die-cut variation with extended glue flap at bottom and with hand holes)



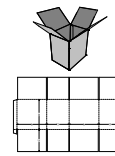
FEFCO 0203-24 - Full Overlap Slotted Container - FOL (die-cut variation with hand holes)



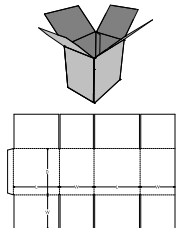
FEFCO 0203-23 - Full Overlap Slotted Container - FOL (die-cut variation with extended glue flap at top & bottom)



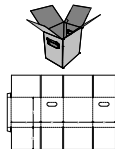
FEFCO 0203-22 - Full Overlap Slotted Container - FOL (die-cut variation with extended glue flap at top)



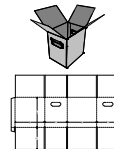
FEFCO 0203-21 - Full Overlap Slotted Container - FOL (die-cut variation with extended glue flap at bottom)



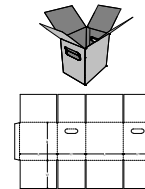
FEFCO 0203-20 - Full Overlap Slotted Container - FOL (die-cut variation)



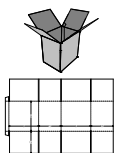
FEFCO 0203-17 - Full Overlap Slotted Container - FOL (slotted variation with extended glue flap at top & bottom and with hand holes)



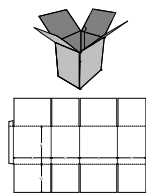
FEFCO 0203-15 - Full Overlap Slotted Container - FOL (slotted variation with extended glue flap at bottom and with hand holes)



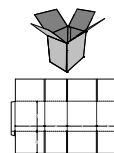
FEFCO 0203-14 - Full Overlap Slotted Container - FOL (slotted variation with hand holes)



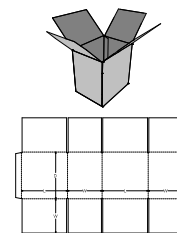
FEFCO 0203-13 - Full Overlap Slotted Container - FOL (slotted variation with extended glue flap at top & bottom)



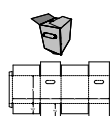
FEFCO 0203-12 - Full Overlap Slotted Container - FOL (slotted variation with extended glue flap at top)



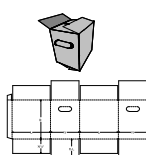
FEFCO 0203-11 - Full Overlap Slotted Container - FOL (slotted variation with extended glue flap at bottom)



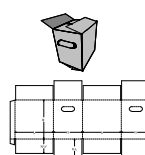
FEFCO 0203-10 - Full Overlap Slotted Container - FOL (slotted variation)



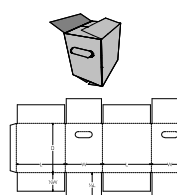
FEFCO 0204-27 - All Flaps Meet Slotted Container - AFM - CSSC (die-cut variation with extended glue flap at top & bottom and with hand holes)



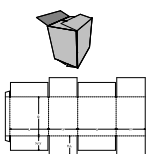
FEFCO 0204-26 - All Flaps Meet Slotted Container - AFM - CSSC (die-cut variation with extended glue flap at top and with hand holes)



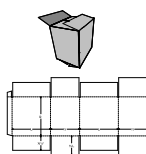
FEFCO 0204-25 - All Flaps Meet Slotted Container - AFM - CSSC (die-cut variation with extended glue flap at bottom and with hand holes)



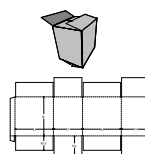
FEFCO 0204-24 - All Flaps Meet Slotted Container - AFM - CSSC (die-cut variation with hand holes)



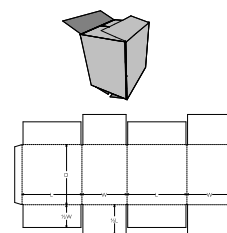
FEFCO 0204-23 - All Flaps Meet Slotted Container - AFM - CSSC (die-cut variation with extended glue flap at top & bottom)



FEFCO 0204-22 - All Flaps Meet Slotted Container - AFM - CSSC (die-cut variation with extended glue flap at top)

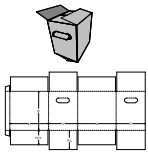


FEFCO 0204-21 - All Flaps Meet Slotted Container - AFM - CSSC (die-cut variation with extended glue flap at bottom)

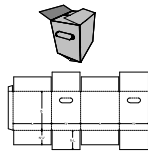


FEFCO 0204-20 - All Flaps Meet Slotted Container - AFM - CSSC (die-cut variation)

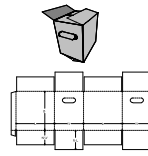




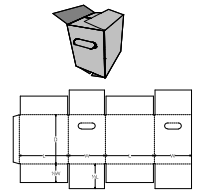
FEFCO 0204-17 - All Flaps Meet Slotted Container - AFM - CSSC (slotted variation with extended glue flap at top & bottom and with hand holes)



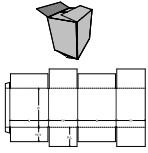
FEFCO 0204-16 - All Flaps Meet Slotted Container - AFM - CSSC (slotted variation with extended glue flap at top and with hand holes)



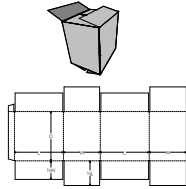
FEFCO 0204-15 - All Flaps Meet Slotted Container - AFM - CSSC (slotted variation with extended glue flap at bottom and with hand holes)



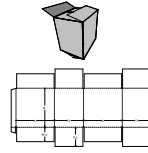
FEFCO 0204-14 - All Flaps Meet Slotted Container - AFM - CSSC (slotted variation with hand holes)



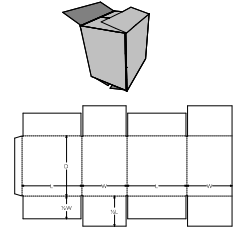
FEFCO 0204-13 - All Flaps Meet Slotted Container - AFM - CSSC (slotted variation with extended glue flap at top & bottom)



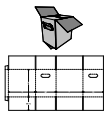
FEFCO 0204-12 - All Flaps Meet Slotted Container - AFM - CSSC (slotted variation with extended glue flap at top)



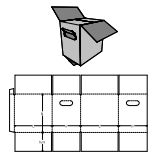
FEFCO 0204-11 - All Flaps Meet Slotted Container - AFM - CSSC (slotted variation with extended glue flap at bottom)



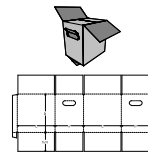
FEFCO 0204-10 - All Flaps Meet Slotted Container - AFM - CSSC (slotted variation)



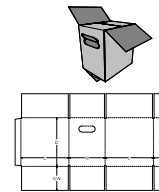
FEFCO 0205-27 - Outer Flaps Partly Overlap, Inner Flaps Meet - CSO (die-cut variation with extended glue flap at top & bottom and with hand holes)



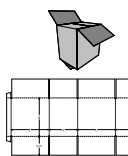
FEFCO 0205-26 - Outer Flaps Partly Overlap, Inner Flaps Meet - CSO (die-cut variation with extended glue flap at top and with hand holes)



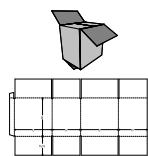
FEFCO 0205-25 - Outer Flaps Partly Overlap, Inner Flaps Meet - CSO (die-cut variation with extended glue flap at bottom and with hand holes)



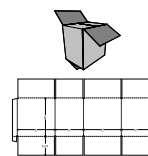
FEFCO 0205-24 - Outer Flaps Partly Overlap, Inner Flaps Meet - CSO (die-cut variation with hand holes)



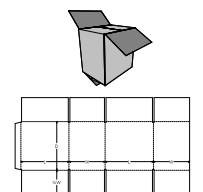
FEFCO 0205-23 - Outer Flaps Partly Overlap, Inner Flaps Meet - CSO (die-cut variation with extended glue flap at top & bottom)



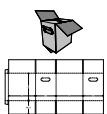
FEFCO 0205-22 - Outer Flaps Partly Overlap, Inner Flaps Meet - CSO (die-cut variation with extended glue flap at top)



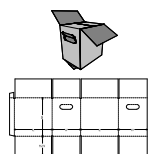
FEFCO 0205-21 - Outer Flaps Partly Overlap, Inner Flaps Meet - CSO (die-cut variation with extended glue flap at bottom)



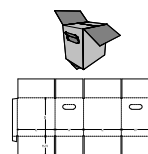
FEFCO 0205-20 - Outer Flaps Partly Overlap, Inner Flaps Meet - CSO (die-cut variation)



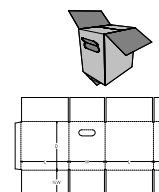
FEFCO 0205-17 - Outer Flaps Partly Overlap, Inner Flaps Meet - CSO (slotted variation with extended glue flap at top & bottom and with hand holes)



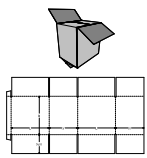
FEFCO 0205-16 - Outer Flaps Partly Overlap, Inner Flaps Meet - CSO (slotted variation with extended glue flap at top and with hand holes)



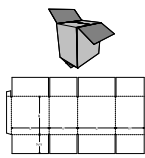
FEFCO 0205-15 - Outer Flaps Partly Overlap, Inner Flaps Meet - CSO (slotted variation with extended glue flap at bottom and with hand holes)



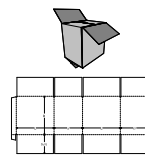
FEFCO 0205-14 - Outer Flaps Partly Overlap, Inner Flaps Meet - CSO (slotted variation with hand holes)



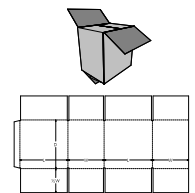
FEFCO 0205-13 - Outer Flaps Partly Overlap, Inner Flaps Meet - CSO (slotted variation with extended glue flap at top & bottom)



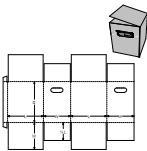
FEFCO 0205-12 - Outer Flaps Partly Overlap, Inner Flaps Meet - CSO (slotted variation with extended glue flap at top)



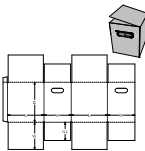
FEFCO 0205-11 - Outer Flaps Partly Overlap, Inner Flaps Meet - CSO (slotted variation with extended glue flap at bottom)



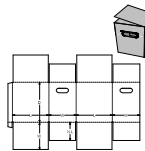
FEFCO 0205-10 - Outer Flaps Partly Overlap, Inner Flaps Meet - CSO (slotted variation)



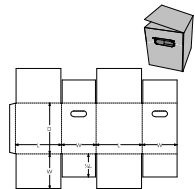
FEFCO 0206-27 - Outer Flaps Overlap, Inner Flaps Meet - SFF (die-cut variation with extended glue flap at top & bottom and with hand holes)



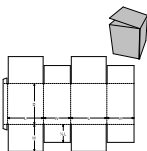
FEFCO 0206-26 - Outer Flaps Overlap, Inner Flaps Meet - SFF (die-cut variation with extended glue flap at top and with hand holes)



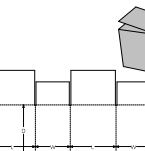
FEFCO 0206-25 - Outer Flaps Overlap, Inner Flaps Meet - SFF (die-cut variation with extended glue flap at bottom and with hand holes)



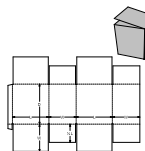
FEFCO 0206-24 - Outer Flaps Overlap, Inner Flaps Meet - SFF (die-cut variation with hand holes)



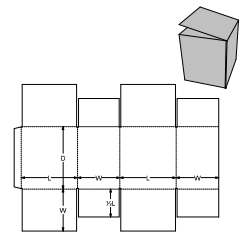
FEFCO 0206-23 - Outer Flaps Overlap, Inner Flaps Meet - SFF (die-cut variation with extended glue flap at top & bottom)



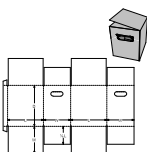
FEFCO 0206-22 - Outer Flaps Overlap, Inner Flaps Meet - SFF (die-cut variation with extended glue flap at top)



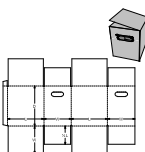
FEFCO 0206-21 - Outer Flaps Overlap, Inner Flaps Meet - SFF (die-cut variation with extended glue flap at bottom)



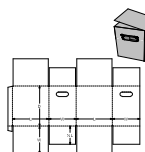
FEFCO 0206-20 - Outer Flaps Overlap, Inner Flaps Meet - SFF (die-cut variation)



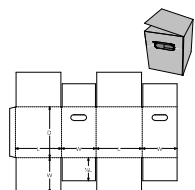
FEFCO 0206-17 - Outer Flaps Overlap, Inner Flaps Meet - SFF (slotted variation with extended glue flap at top & bottom and with hand holes)



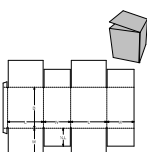
FEFCO 0206-16 - Outer Flaps Overlap, Inner Flaps Meet - SFF (slotted variation with extended glue flap at top and with hand holes)



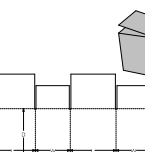
FEFCO 0206-15 - Outer Flaps Overlap, Inner Flaps Meet - SFF (slotted variation with extended glue flap at bottom and with hand holes)



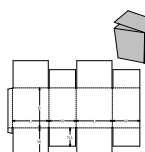
FEFCO 0206-14 - Outer Flaps Overlap, Inner Flaps Meet - SFF (slotted variation with hand holes)



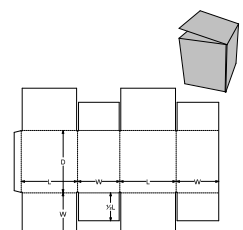
FEFCO 0206-13 - Outer Flaps Overlap, Inner Flaps Meet - SFF (slotted variation with extended glue flap at top & bottom)



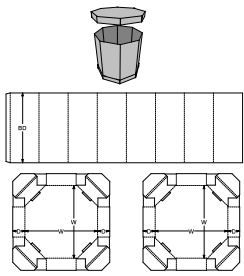
FEFCO 0206-12 - Outer Flaps Overlap, Inner Flaps Meet - SFF (slotted variation with extended glue flap at top)



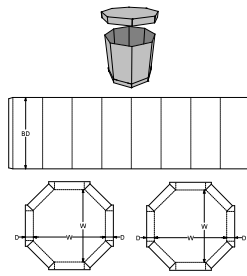
FEFCO 0206-11 - Outer Flaps Overlap, Inner Flaps Meet - SFF (slotted variation with extended glue flap at bottom)



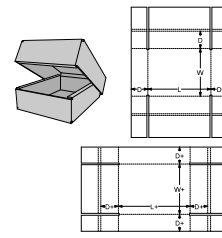
FEFCO 0206-10 - Outer Flaps Overlap, Inner Flaps Meet - SFF (slotted variation)



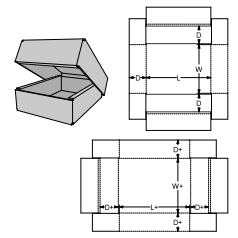
**FEFCO 0351 - Octagonal Bulk Box - Rolled Ends**



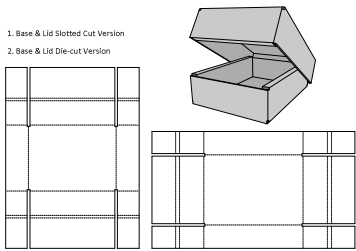
**FEFCO 0350 - Octagonal Bulk Box - Glued Ends**



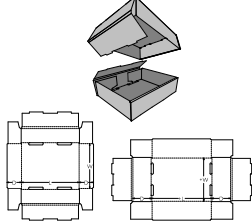
**FEFCO 0331 Slotted Version - Courier Pack, Diecut Centre Taped**



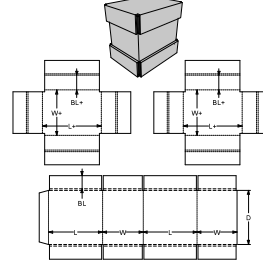
**FEFCO 0331 Die-cut Version - Courier Pack, Diecut Centre Taped**



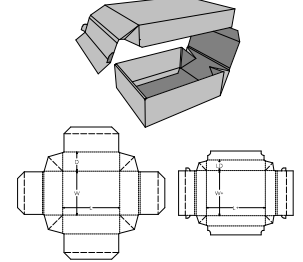
**FEFCO 0331 - Courier Pack, Diecut Centre Taped**



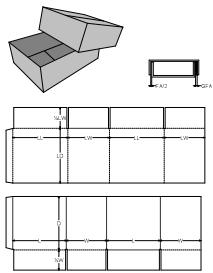
**FEFCO 0330 - Rolled Side Tray & Push On Rolled End Tray**



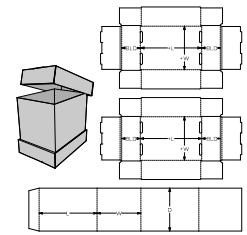
**FEFCO 0325 - Sleeve with Roll End Base and Lid**



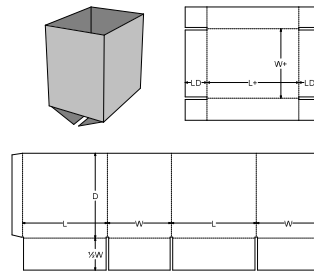
**FEFCO 0323 - Self Locking Webbed Tray and Lid**



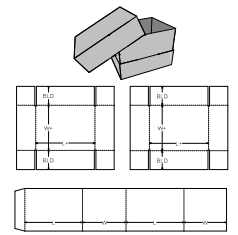
**FEFCO 0320 - Half Slotted Container - HSC**



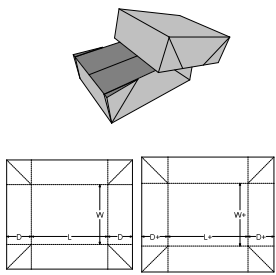
**FEFCO 0314 - Sleeve Body & Base and Lid - Push On Rolled End Tray**



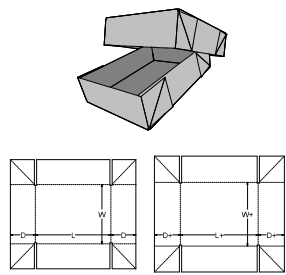
**FEFCO 0312 - Half Slotted Container with Lid - HSC**



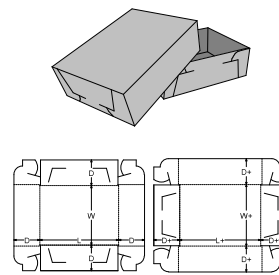
**FEFCO 0310 - Sleeve with Slotted Tray and End to End Lid**



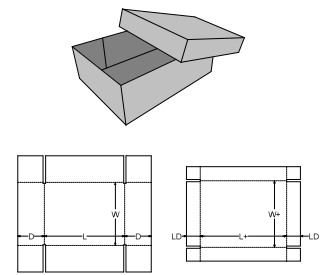
**FEFCO 0309 - Webbed Corner Tray and Lid**



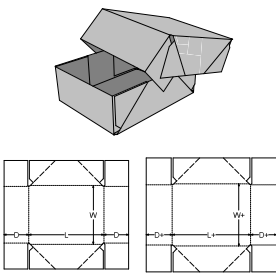
**FEFCO 0308 - Corner Tray and Lid**



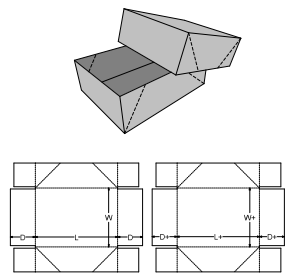
**FEFCO 0307 - Self Locking Tray and Lid**



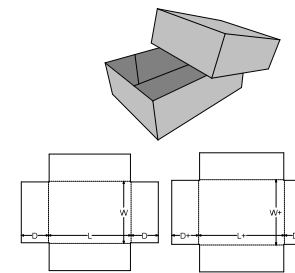
**FEFCO 0306 - Side Slotted Tray with End Slotted Cover**



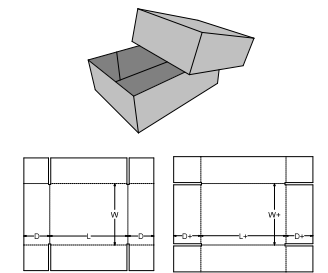
**FEFCO 0304 - Infold Tray and Lid**



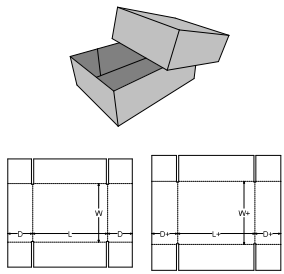
**FEFCO 0303 - Outfold Tray and Lid**



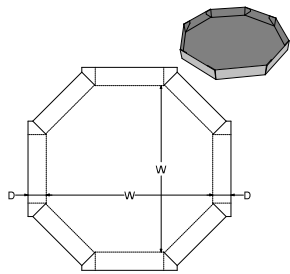
**FEFCO 0302 - Taped Tray and Lid**



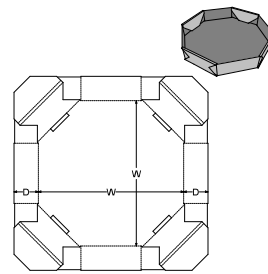
**FEFCO 0301 - Side Slotted Tray with End Slotted Lid**



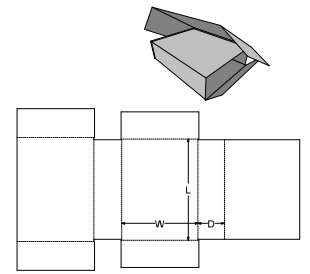
FEFCO 0300 - Side Slotted Tray and Lid



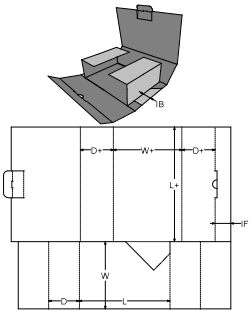
FEFCO 0499 - Octagonal Glued Tray



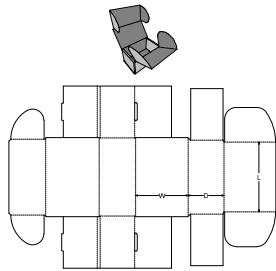
FEFCO 0498 - Octagonal Rolled End Tray



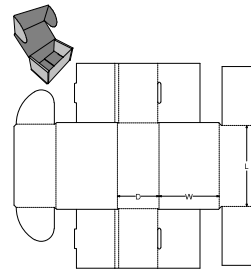
FEFCO 0497 - 5 Panel Folder - Non-Glued



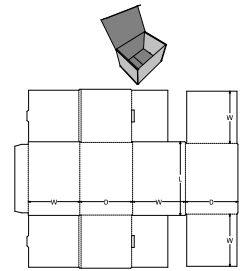
FEFCO 0473 - Twist Folder



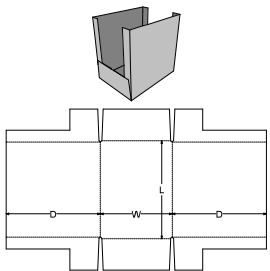
FEFCO 0472 - Economy Tray RE Double Tuck Top CL



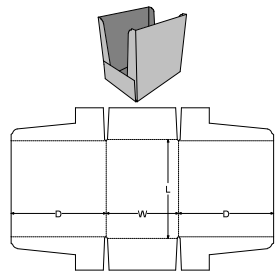
FEFCO 0471 - Economy Tray RE Tuck Top CL



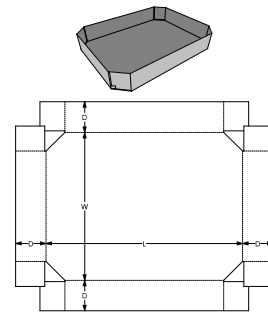
FEFCO 0470 - Economy Tray RE Tuck Top



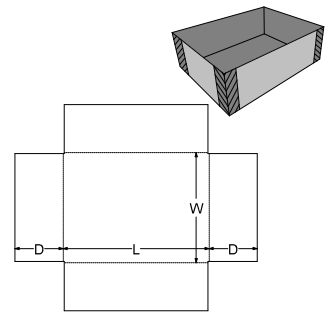
FEFCO 0460-1 - High Wall Tray - Display Tray



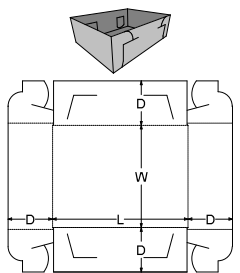
FEFCO 0460 - High Wall Tray - Display Tray



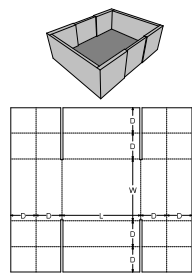
FEFCO 0459 - Can Tray



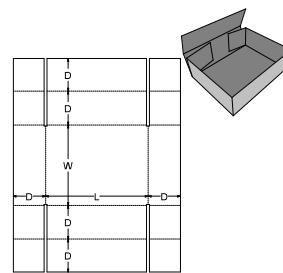
FEFCO 0458 - Taped Tray



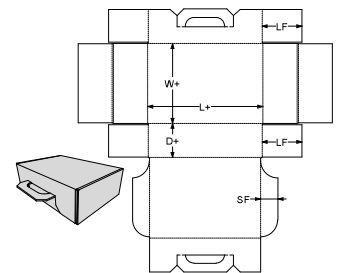
FEFCO 0457 - Self Locking Tray



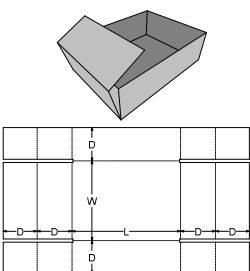
FEFCO 0456 - Full Reinforced Tray



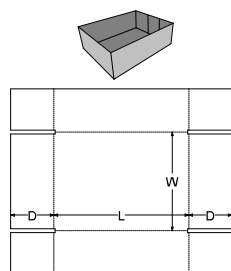
FEFCO 0455 - Tray Folded Sides



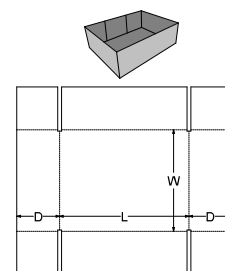
FEFCO 0454 Briefcase - Case Folded Ends



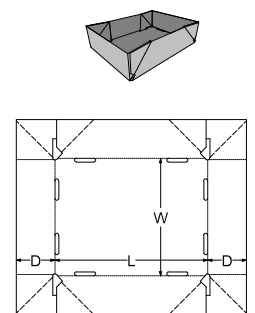
FEFCO 0454 - Tray Folded Ends



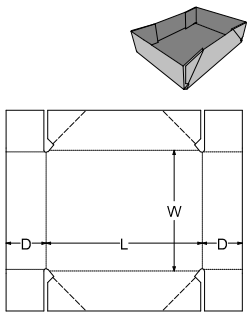
FEFCO 0453 - End Slotted Tray



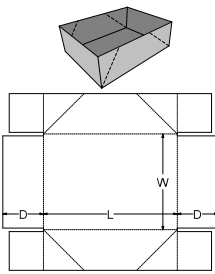
FEFCO 0452 - Side Slotted Tray



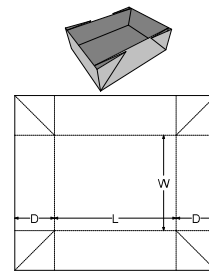
FEFCO 0451-1 - Infold Tray



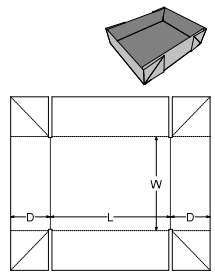
FEFCO 0451 - Infold Tray



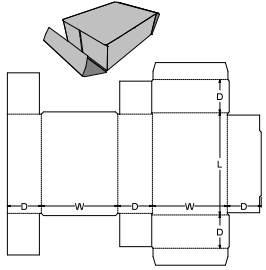
FEFCO 0450 - Outfold Tray, End Slots



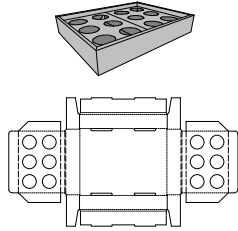
FEFCO 0449 - Infold Tray Webbed Corners



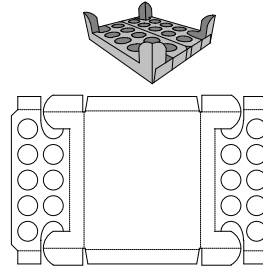
FEFCO 0448 - Outfold Tray, Side Slots



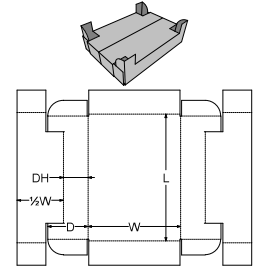
FEFCO 0447 - Unglued End Tuck



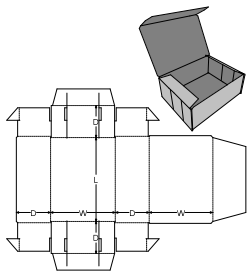
FEFCO 0446-2 - Product Tray, Recess Deck, Rolled Side Tray



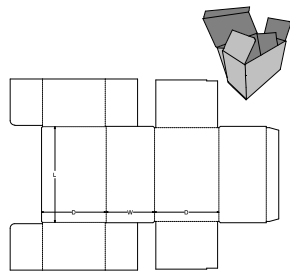
FEFCO 0446-1 - Product Tray Stand Off Corners



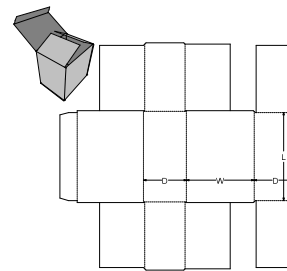
FEFCO 0446 - Product Tray Stand Off Corners



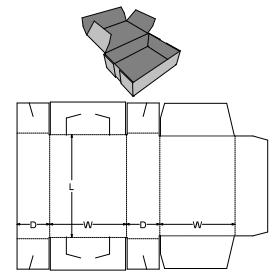
FEFCO 0445 - End Lock Tuck Tray



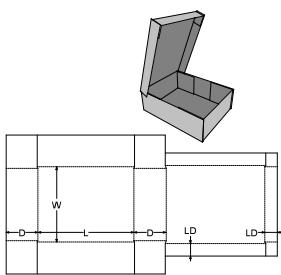
FEFCO 0444 - Unglued Tuck To Back



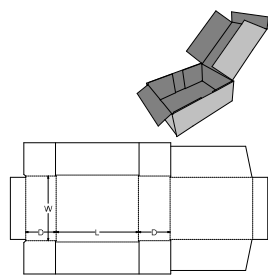
FEFCO 0443 - Unglued Tuck To Front



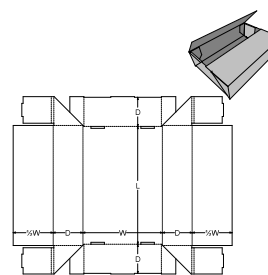
FEFCO 0442 - End Slit Lock Tuck Tray



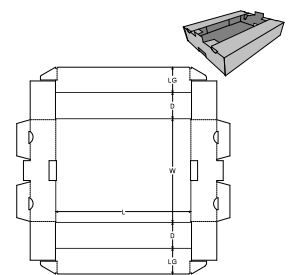
FEFCO 0441 - Slitted Tray and Lid



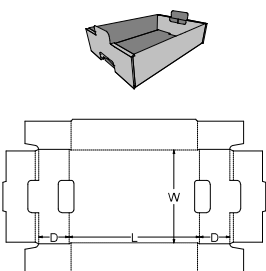
FEFCO 0440 - Slitted Tray Full Depth Lid



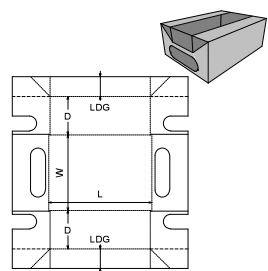
FEFCO 0437 - End Lock Tray, Centre Joined



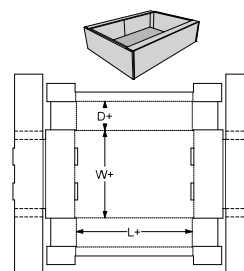
FEFCO 0436 - Flanged Stacking Tray



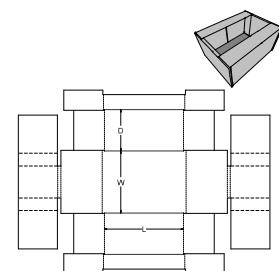
FEFCO 0435 - Rolled End Stacking Tray



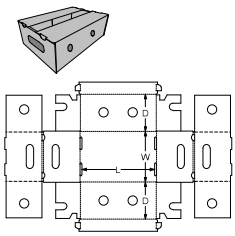
FEFCO 0434 - Flanged Product Tray



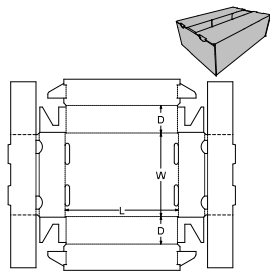
FEFCO 0433-1 - Buffered Flanged Tray



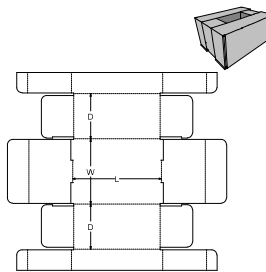
FEFCO 0433 - Buffered Flanged Tray



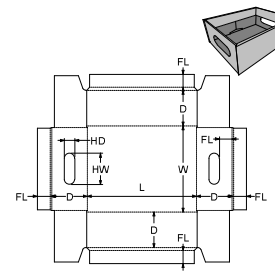
FEFCO 0432-1 - Locking Flanged Tray, Hand and Vent Holes



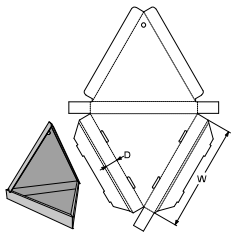
FEFCO 0432 - Locking Flanged Tray



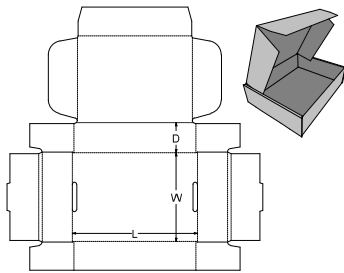
FEFCO 0431 - Reinforced Flanged Tray



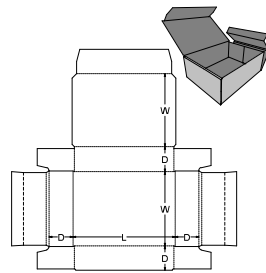
FEFCO 0430 - Roll Over Top Tray, Hand Holes



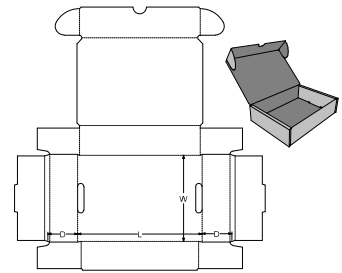
FEFCO 0429 Pizza Case - Rolled End Tuck Tray with Dust Flaps, Triangular Basis



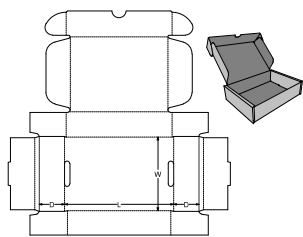
FEFCO 0429 - Rolled End Tuck Tray with Dust Flaps



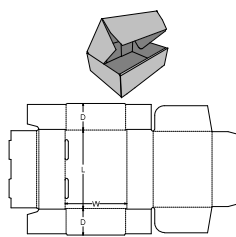
FEFCO 0428 - Rolled End Slot-less Tuck Tray



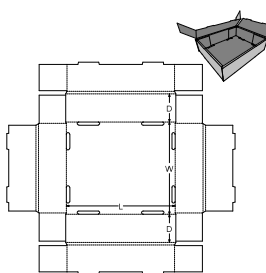
FEFCO 0427-1 - Rolled End Tuck Tray, Cherry Locks



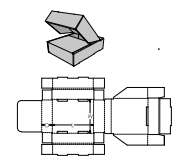
FEFCO 0427 - Rolled End Tuck Tray, Dust Flaps and Cherry Locks



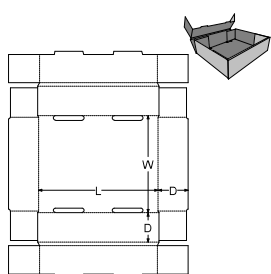
FEFCO 0426 - Rolled Side Tuck Tray with Dust Flaps - Pizza Box



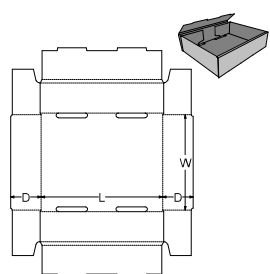
FEFCO 0425 - Rolled 4 Sides Tray



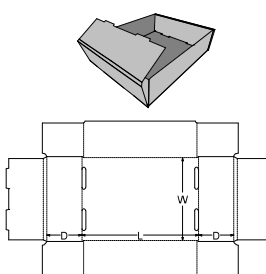
FEFCO 0424 Swinging Closure System - Rolled Side Display Tray, Reinforced Ends, Swinging Closure System



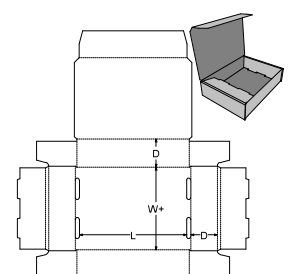
FEFCO 0424 - Rolled Side Tray, Reinforced Ends



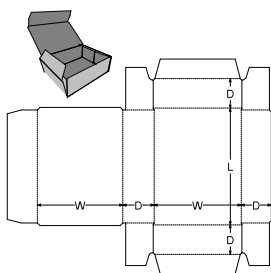
FEFCO 0423 - Rolled Side Tray



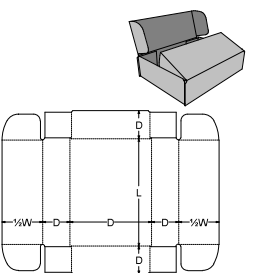
FEFCO 0422 - Rolled End Tray



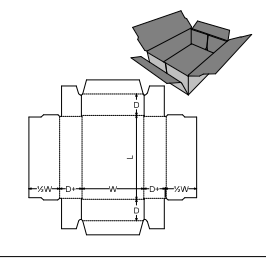
FEFCO 0421 - Rolled End Tuck Tray



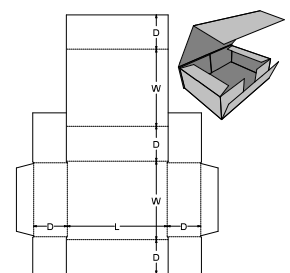
FEFCO 0420 - Flanged Tuck Tray



FEFCO 0416 - One Piece Folder, Centre Tuck - OPF



FEFCO 0415 - One Piece Taped Folder with Dust Flaps - OPF



FEFCO 0413 - Courier Pack, Diecut Side Taped

**FEFCO 0412 - Courier Pack, Diecut Centre Taped**

**FEFCO 0411 - 5 Panel Folder, Centre Seam - FPF**

**FEFCO 0410 - 5 Panel Folder - FPF**

**FEFCO 0409 - 5 Panel Folder, Side Taped - FPF**

**FEFCO 0406 - Wrap Around Blank**

**FEFCO 0405 - 5 Panel Wrap with End Caps**

**FEFCO 0404 - 2 Piece Folder**

**FEFCO 0403 - One Piece Folder Buffer Ends - Air Cell**

**FEFCO 0402 - One Piece Folder, All Panels Meet - OPF**

**FEFCO 0401 - One Piece Folder, Widths Meet - OPF**

**FEFCO 0400 - One Piece Folder, Wrap Around - OPF**

**FEFCO 0512 - Interlocking Slits Side Glued**

**FEFCO 0511 - Interlocking Slits Inner Tuck with Dust Flaps**

**FEFCO 0510 - Interlocking Slits Inner Tuck**

**FEFCO 0509 - Interlocking Slits Inner Centre Join**

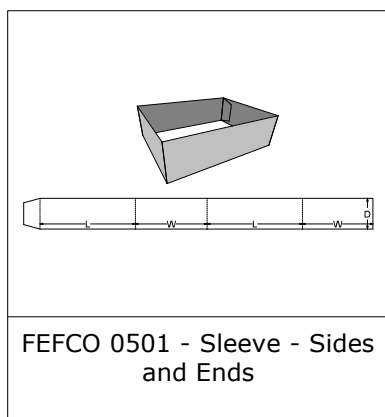
**FEFCO 0507 - Interlocking Slits C**

**FEFCO 0505 - Interlocking Slits B**

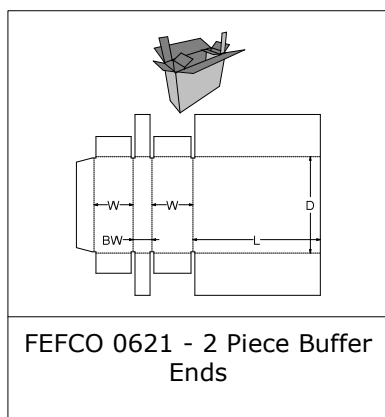
**FEFCO 0504 - Interlocking Slits A**

**FEFCO 0503 - Sleeve - Top, Base and Sides**

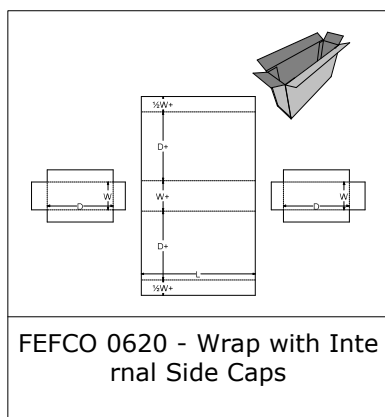
**FEFCO 0502 - Sleeve - Top, Base and Ends**



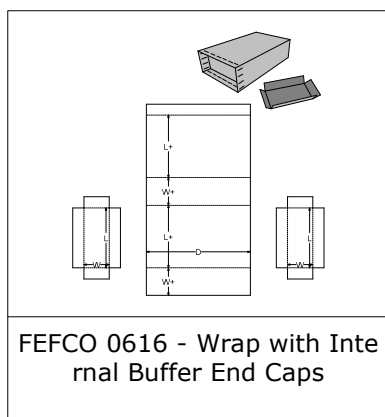
FEFCO 0501 - Sleeve - Sides and Ends



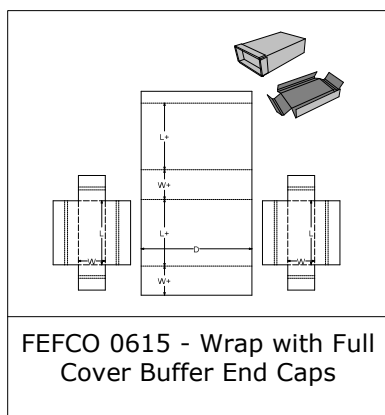
FEFCO 0621 - 2 Piece Buffer Ends



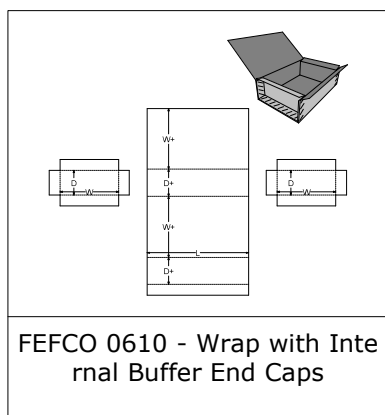
FEFCO 0620 - Wrap with Internal Side Caps



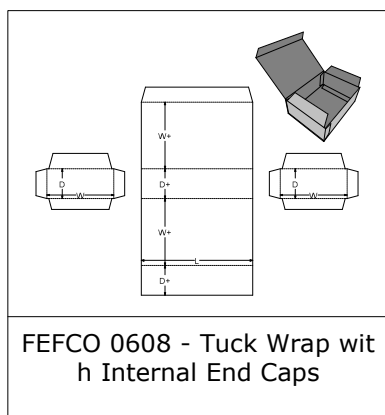
FEFCO 0616 - Wrap with Internal Buffer End Caps



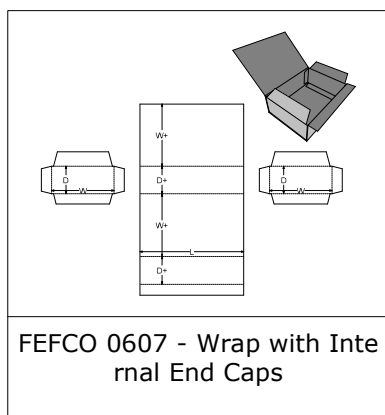
FEFCO 0615 - Wrap with Full Cover Buffer End Caps



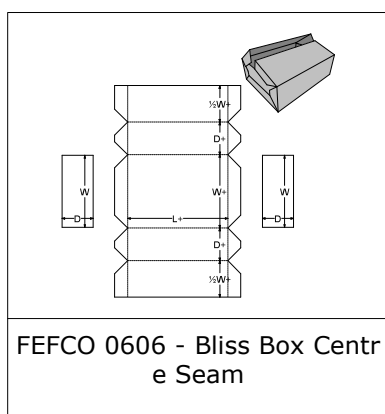
FEFCO 0610 - Wrap with Internal Buffer End Caps



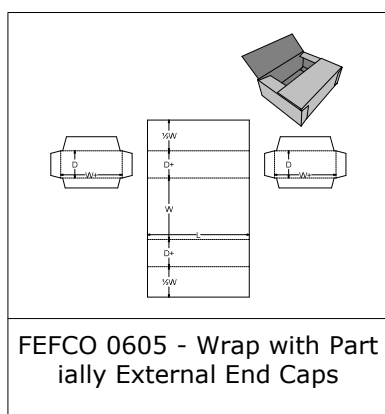
FEFCO 0608 - Tuck Wrap with Internal End Caps



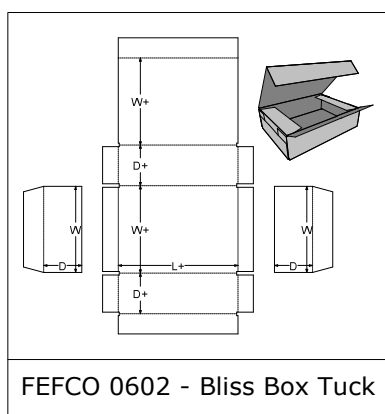
FEFCO 0607 - Wrap with Internal End Caps



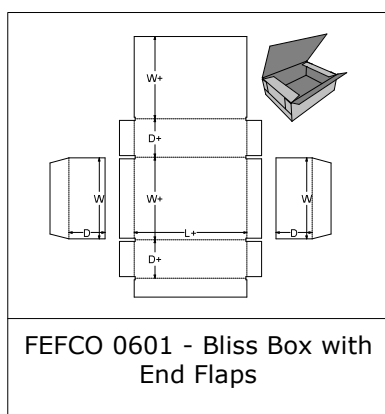
FEFCO 0606 - Bliss Box Centre Seam



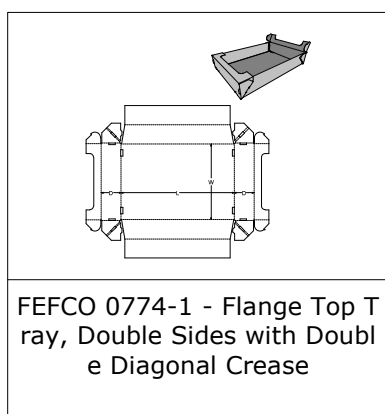
FEFCO 0605 - Wrap with Partially External End Caps



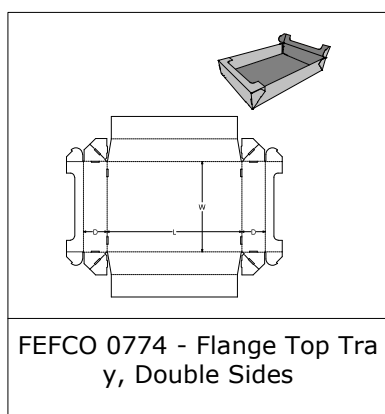
FEFCO 0602 - Bliss Box Tuck



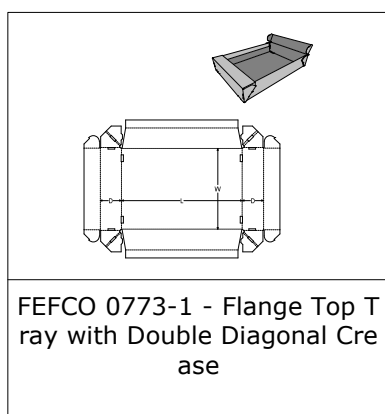
FEFCO 0601 - Bliss Box with End Flaps



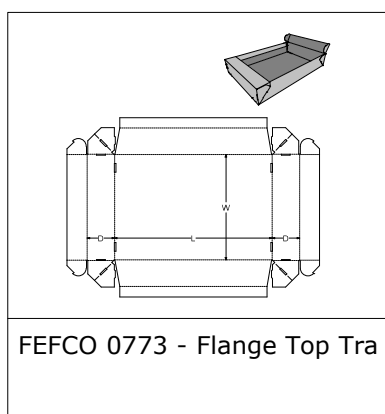
FEFCO 0774-1 - Flange Top Tray, Double Sides with Double Diagonal Crease



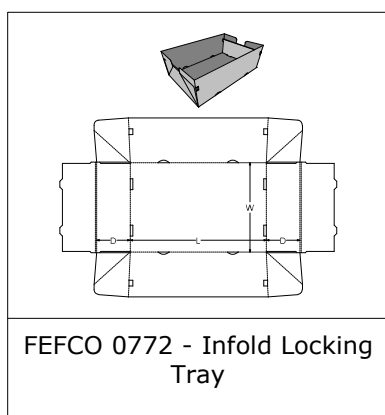
FEFCO 0774 - Flange Top Tray, Double Sides



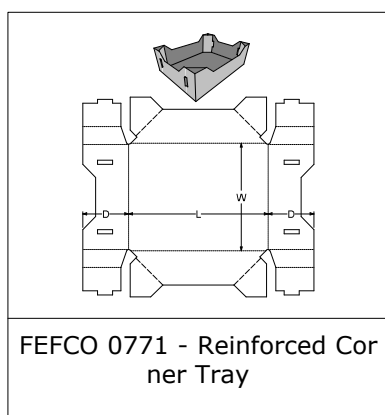
FEFCO 0773-1 - Flange Top Tray with Double Diagonal Crease



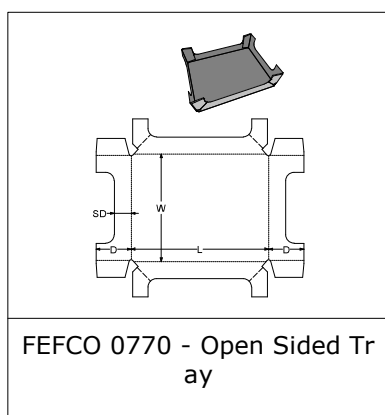
FEFCO 0773 - Flange Top Tray



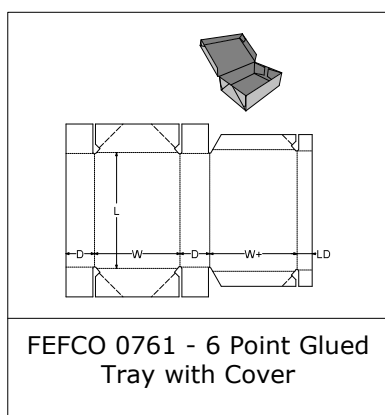
FEFCO 0772 - Infold Locking Tray



FEFCO 0771 - Reinforced Corner Tray

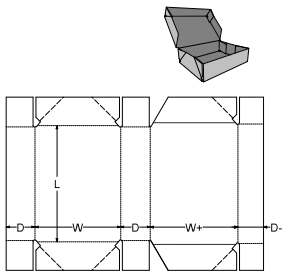


FEFCO 0770 - Open Sided Tray

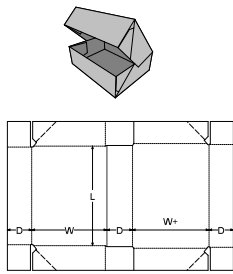


FEFCO 0761 - 6 Point Glued Tray with Cover

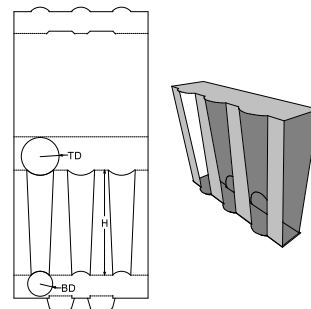




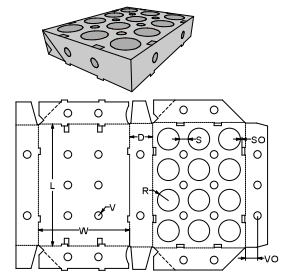
FEFCO 0760 - 6 Point Glued Tray with Cover



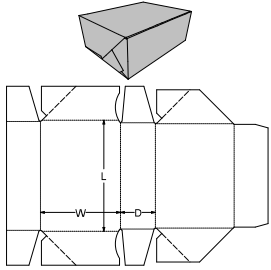
FEFCO 0759 - 4 Point Glued Tray with Lid



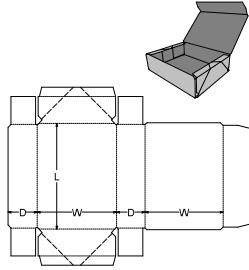
FEFCO 0752 - Glass Pack



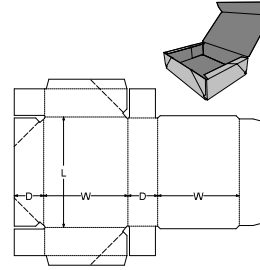
FEFCO 0751-X - 4 Point Glued, Hinged Lid, with Holes



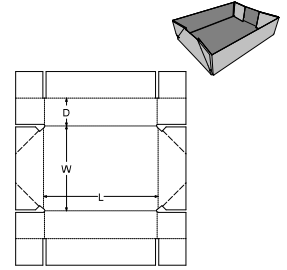
FEFCO 0751 - 4 Point Glued, Hinged Lid



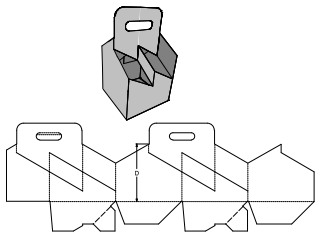
FEFCO 0748 - 4 Point Glued Tuck Tray



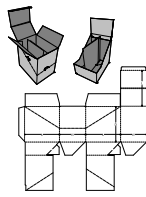
FEFCO 0747 - 4 Point Side Glued Tuck Tray



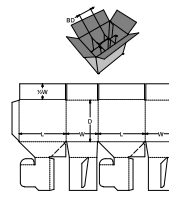
FEFCO 0718 - 4 Point Glued Tray



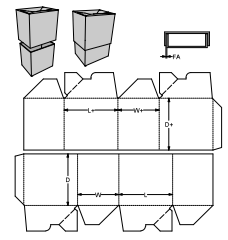
FEFCO 0717 - Crash Lock Base Auto Bottom, Bottle Carrier - CLB



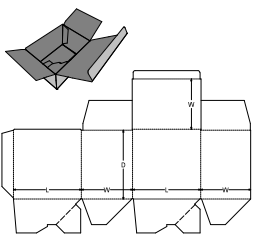
FEFCO 0716 - Crash Lock Base Auto Bottom with Divider, Tuck Display Centre Divider - CLB/TF



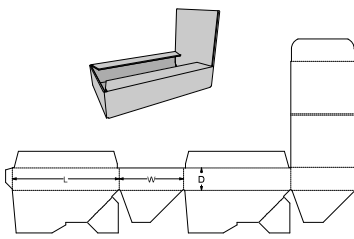
FEFCO 0715 - Crash Lock Base Auto Bottom with Divider, Regular Slotted Top - CLB/RS



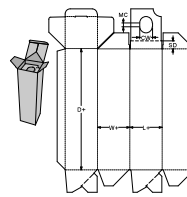
FEFCO 0714 - Crash Lock Base Auto Bottom, Two parts - Base and Lid



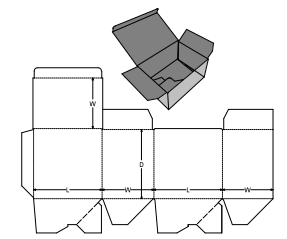
FEFCO 0713-1 - Crash Lock Base Auto Bottom, Tuck to Back Top - CLB/TB



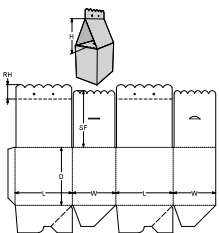
FEFCO 0713 Box-Display - Crash Lock Base Auto Bottom, Box-Display



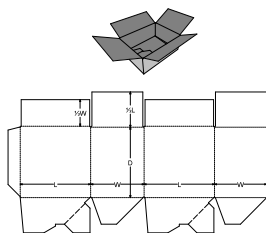
FEFCO 0713 Bottle Case - Crash Lock Base Auto Bottom, Bottle Recessed Support



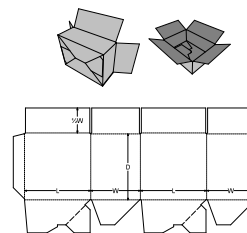
FEFCO 0713 - Crash Lock Base Auto Bottom, Tuck to Front Top - CLB/TF



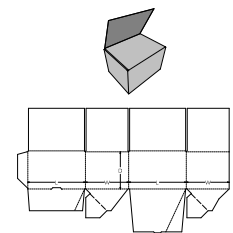
FEFCO 0712 Hanging Top - Roof Hanging Top, Crash Lock Base Auto Bottom



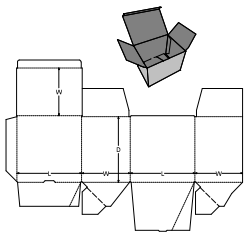
FEFCO 0712 - Crash Lock Base Auto Bottom, All Flaps Meet Top - CLB/AFM



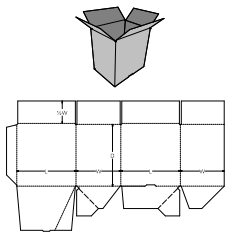
FEFCO 0711 - Crash Lock Auto Bottom, Regular Slotted Top - CLB/RSC



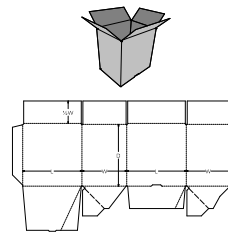
FEFCO 0703 - Full Crash Lock Auto Bottom, Full Overlapping Top - FCB/FOL



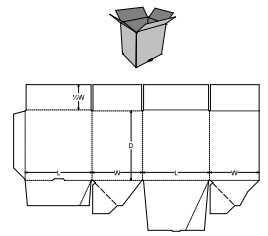
FEFCO 0701-3 - Full Crash Lock Auto Bottom, Tuck to Front Top - FCB/TF



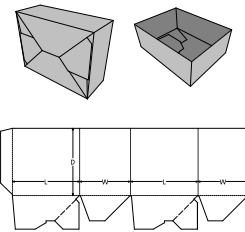
FEFCO 0701-2 - Full Crash Lock Auto Bottom, Regular Slotted Top - FCB/RSC



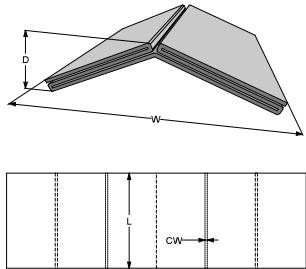
FEFCO 0701-1 - Full Crash Lock Auto Bottom, Regular Slotted Top - FCB/RSC



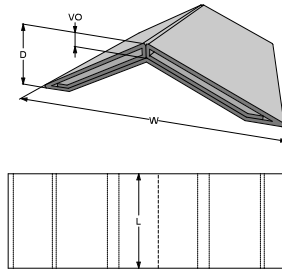
FEFCO 0701 - Full Crash Lock Auto Bottom, Regular Slotted Top - FCB/RSC



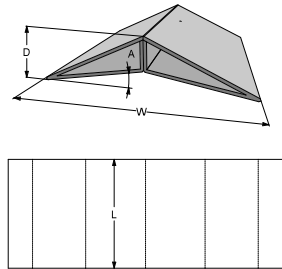
FEFCO 0700 - Crash Lock Auto Bottom, Open Top - CLB/O



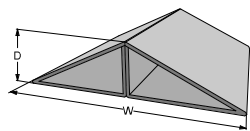
FEFCO 0976 - Zig-Zag Folded, Rolled Out



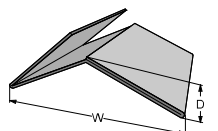
FEFCO 0975 - V-Folded With Rolled In- and Outside Brace



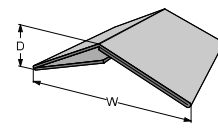
FEFCO 0974 - V-Folded With Rolled Vertical Braces



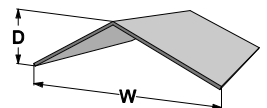
FEFCO 0973 - V-Folded With Rolled Vertical Braces



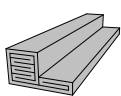
FEFCO 0972 - V-Folded, Rolled Out



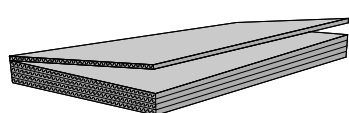
FEFCO 0971 - V-Folded, Rolled



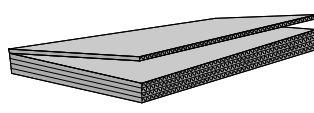
FEFCO 0970 - V-Folded



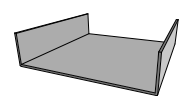
FEFCO 0967 - Folded Edge Protector



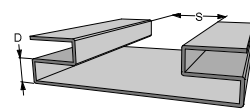
FEFCO 0966 - Zig-Zag Layers



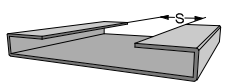
FEFCO 0965 - Zig-Zag Layers



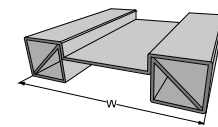
FEFCO 0951 - Panel With Tucks



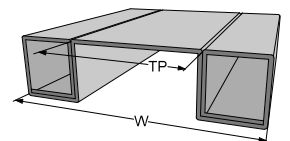
FEFCO 0950 - Panel With Zig-Zag Tucks



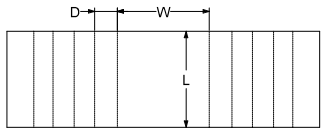
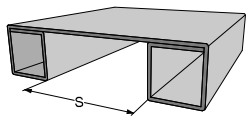
FEFCO 0949 - Panel With Two Side Tucks



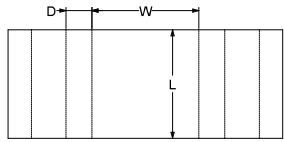
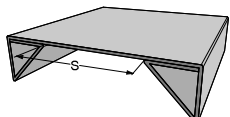
FEFCO 0948 - Rolled Sides With Braces



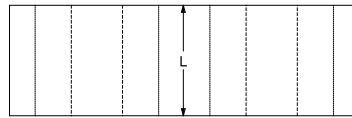
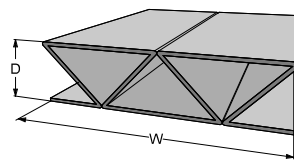
FEFCO 0947 - Rolled Sides



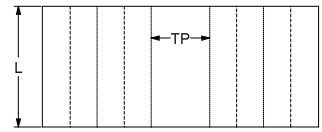
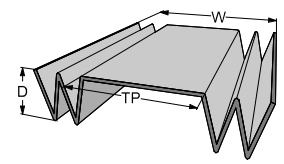
FEFCO 0946 - Turn Over Side



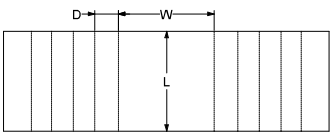
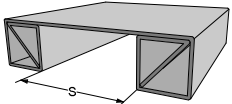
FEFCO 0945 - Rolled Braced Sides



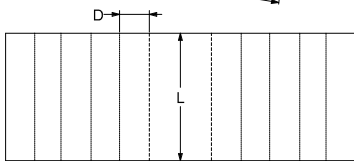
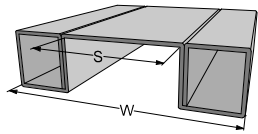
FEFCO 0944 - Swallow Tails



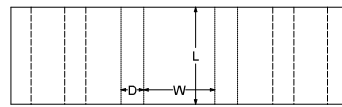
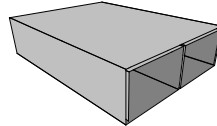
FEFCO 0943 - Zig-Zag Sides



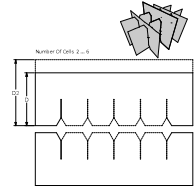
FEFCO 0942 - Rolled Sides, With Braces



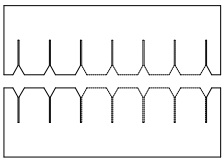
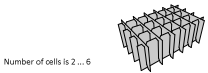
FEFCO 0941 - Rolled Sides



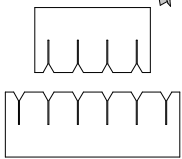
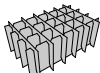
FEFCO 0940 - Rolled Double Tube



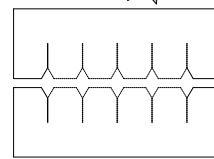
FEFCO 0935 CUSTOM - Like FEFCO 0933, Full and Partial Height Width Dividers, Varied Numbers Of Cells



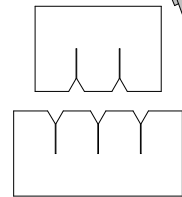
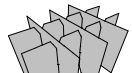
FEFCO 0934 CUSTOM - Like FEFCO 0934 But With Varied Numbers Of Cells



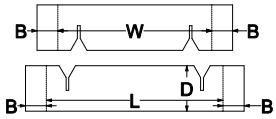
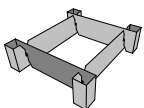
FEFCO 0934 - Dividers, Partition, Equal Cell, Space From Box Wall



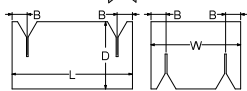
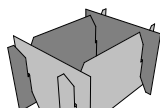
FEFCO 0933 CUSTOM - Like FEFCO 0933 But With Varied Numbers Of Cells



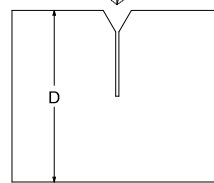
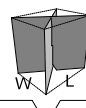
FEFCO 0933 - Dividers, Partition, Equal Cell



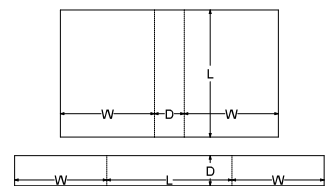
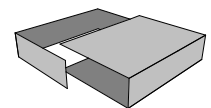
FEFCO 0932 - Interior Compartment with Reinforced Buffer



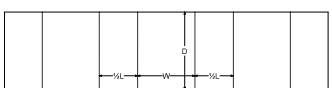
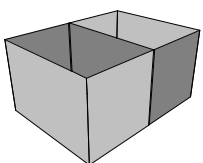
FEFCO 0931 - Interior Compartment with Side Buffers



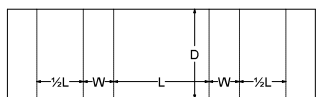
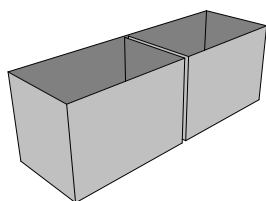
FEFCO 0930 - Interior X Support



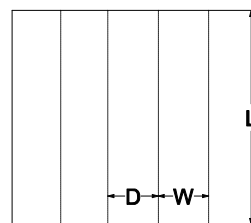
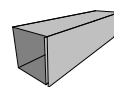
FEFCO 0929 - Interior Wraps



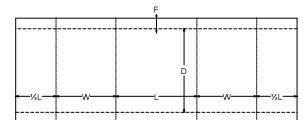
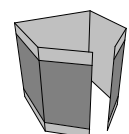
FEFCO 0921 - Interior Buffer



FEFCO 0920 - Interior Buffer



FEFCO 0914 - Tube - 5 Panel



FEFCO 0913 - Fold Over Centre Seam Insert

FEFCO 0911 - Side Slotted Tray

FEFCO 0910 - Tube - Over Side Band - Centre Gap

FEFCO 0909 - Tube - Over End Band - End Gap

FEFCO 0908 - Tube - Side Band - Centre Gap

FEFCO 0907 - Tube - Over End - Centre Gap

FEFCO 0906 - Tube - Over Side - Side Gap

FEFCO 0905 - Tube - Over End - End Gap

FEFCO 0904 - Band - Side Band - Corner Gap

FEFCO 0903 - Pad - Side to Side

FEFCO 0902 - Pad - End to End

FEFCO 0901 - Pad - Horizontal

FEFCO 0900 - Pad - Between Flaps

Shoe Box - Flanged Tuck Tray, (Fefco 0420 Variant)

Roll Pack Quad - Wrap for a short-length textile product

Roll Pack Pentagon - Wrap for a medium-length textile product

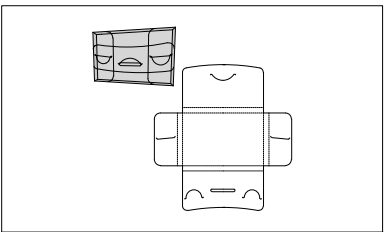
Roll Pack Hexagon - Wrap for a long-length textile product

Glass Pack - 6 pcs. - All Flaps Meet, Centre Partition(s), (Fefco 0229 variant)

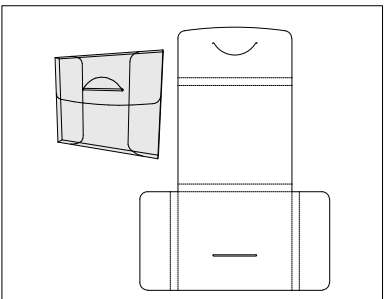
Glass Pack - 4 pcs. - All Flaps Meet, Centre Partition(s), (Fefco 0229 variant)

Glass Pack - 2 pcs. - All Flaps Meet, Centre Partition(s), (Fefco 0229 variant)

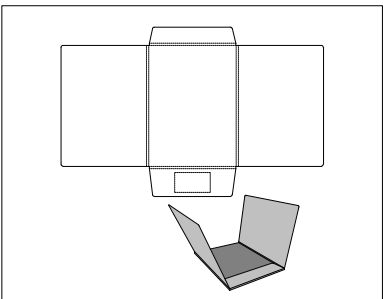
Double Pocket Folder - Pocket Glue - Double Pocket Glue Flap on Pocket



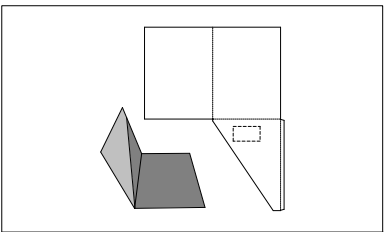
Wrap Folder 3 - Business Card Wallet (Ecma E40.82.00.00 variant for PET,PP)



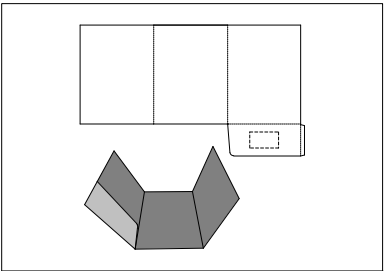
Wrap Folder 2 - CD/DVD Wrap Folder (for PET,PP)



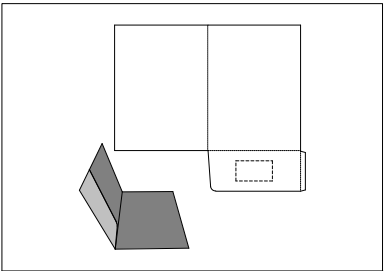
Wrap Folder 1 - Fully Overlapping



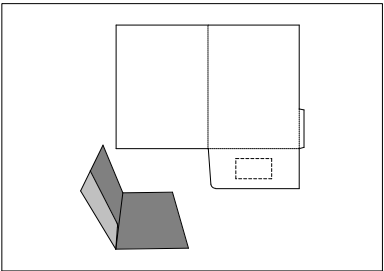
Two Panel Full Side Pocket Folder - Pocket Glue - Two Panel Full Side Pocket Glue Flap on Pocket



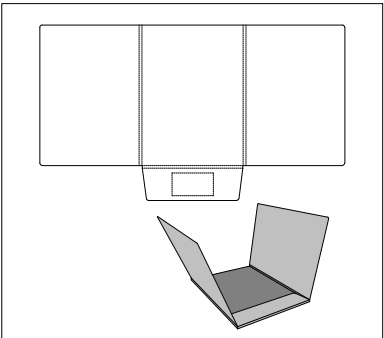
Triple Panel Folder - One Pocket - Triple Panel One Pocket



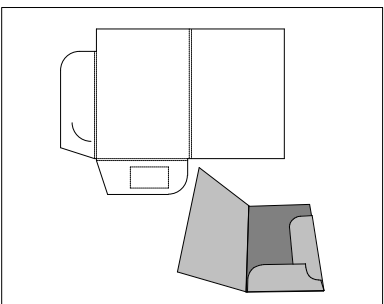
Single Pocket Folder - Pocket Glue - Single Pocket Glue Flap on Pocket



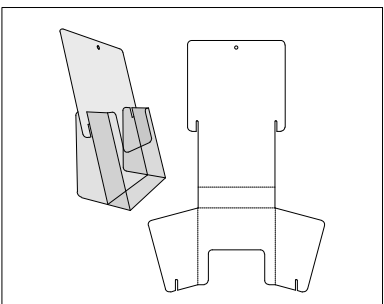
Single Pocket Folder - Panel Glue - Single Pocket Glue Flap on Panel



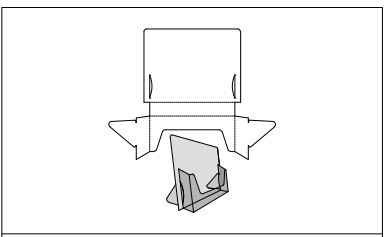
Pocket Folder - Pocket Folder



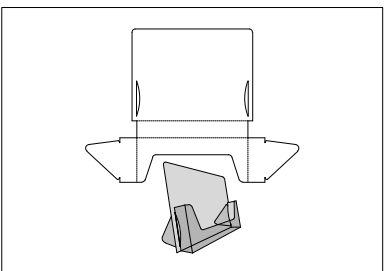
Paper Folder with 2 Flaps - Paper Folder with 2 Flaps



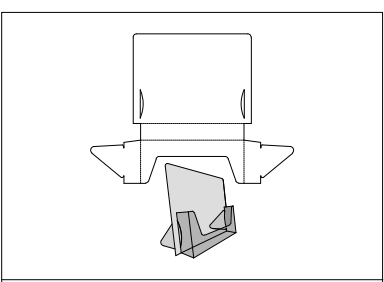
Leaflet Dispenser 6 - Simple Dispenser (For PET, PP)



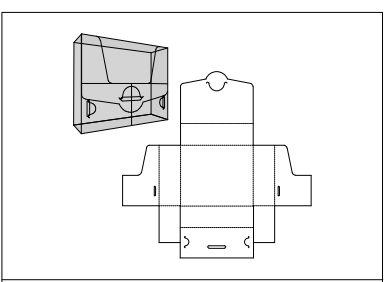
Leaflet Dispenser 5 - Pocket Bottom Flat to Surface, Angled Pocket Top (for PET, PP)



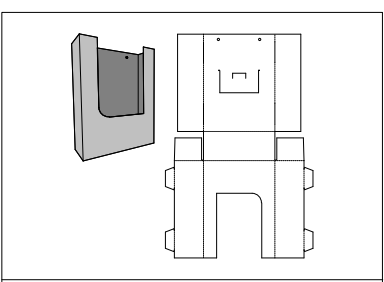
Leaflet Dispenser 4 (For PET, PP) - Pocket Bottom Perpendicular to Back Panel



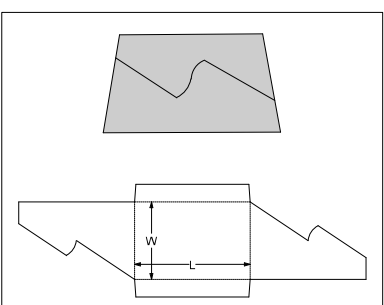
Leaflet Dispenser 3 - Pocket Bottom Flat to Surface (for PET, PP)



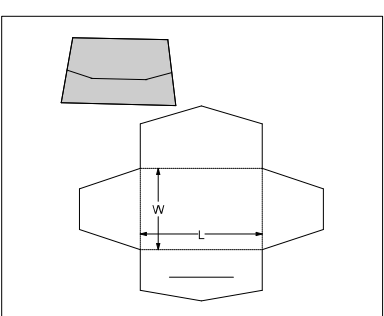
Leaflet Dispenser 2 - Dispenser with Lid (for PET, PP)



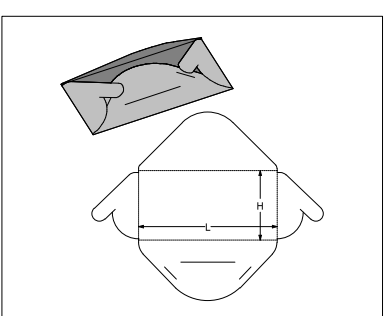
Leaflet Dispenser 1 - Tray, 4 Corner with Open Top and Front Cutout



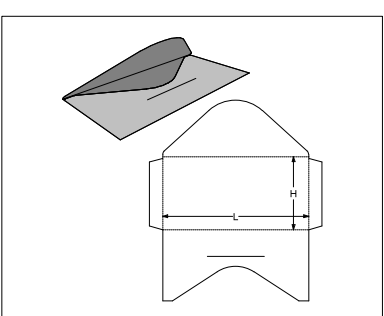
Envelope Wrap 4 - Envelope Wrap 4



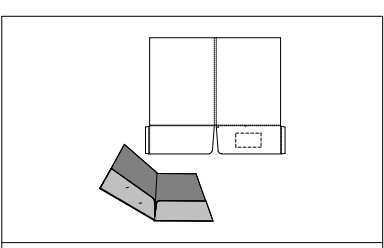
Envelope Wrap 3 - Envelope Wrap 3



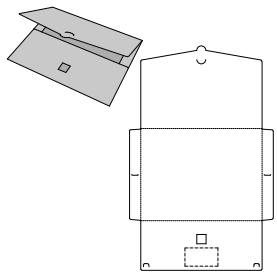
Envelope Wrap 2 - Envelope Wrap 2



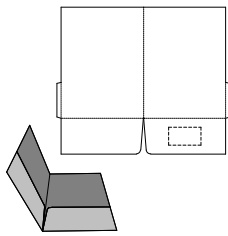
Envelope Wrap 1 - Envelope Wrap 1



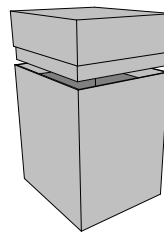
Double Pocket Folder with Spine - Pocket Glue - Double Pocket with Spine Glue Flap on Pocket



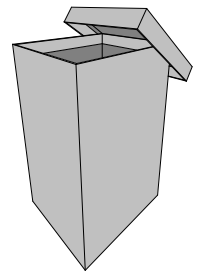
Wrap Folder 4 - Wrap Folder With Closing System



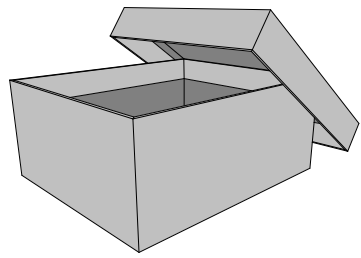
Double Pocket Folder - Panel Glue - Double Pocket Glue Flap on Panel



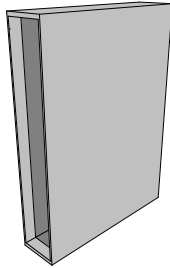
Tray and Lid 3 - Eco Style Tray with High Walls and Plug-in Lid



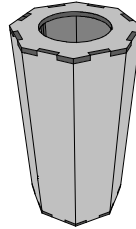
Tray and Lid 2 - Eco Style Tray with High Walls and Lid



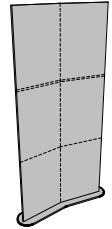
Tray and Lid 1 - Tray and Lid



Slip Case - Slip Case with Wrap



Waste Bin - Waste Bin - Waste Bin, Column, Pillar, Octagon



Totem Display - Totem Display - Printable, Easy Fold and Transport

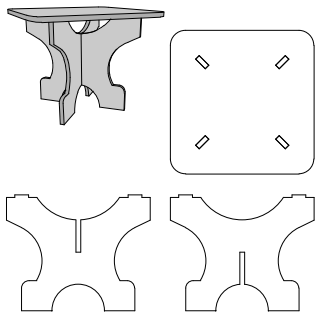


Table Style F

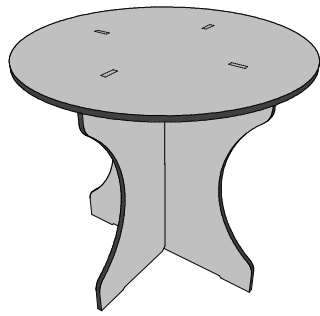
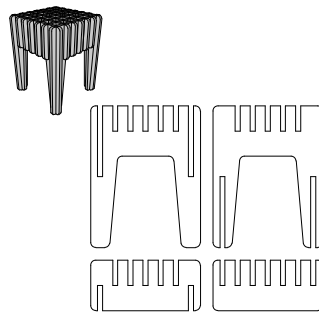
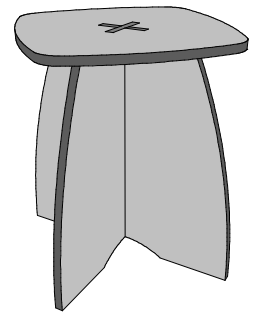


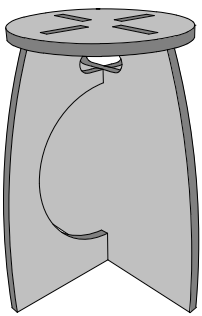
Table - Table, Round, Square



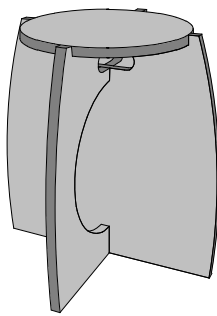
Stool Style 4



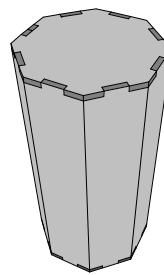
Stool 3 - Stool



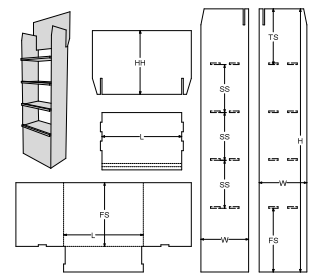
Stool 2 - Stool



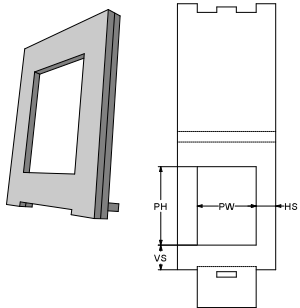
Stool 1 - Stool



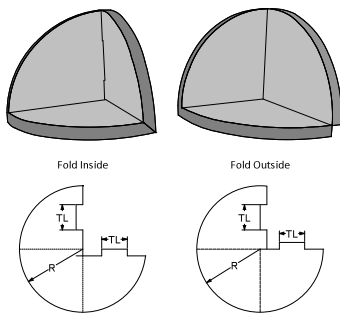
Stool (Octagon) - Column, Pillar, Octagon



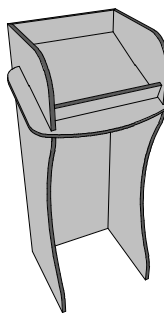
Simple Shelving - Honeycomb "Poor" Construction



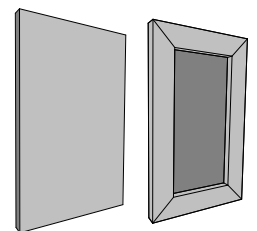
Simple Frame



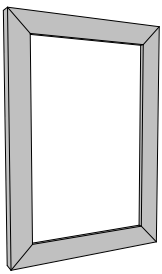
Protective Corner



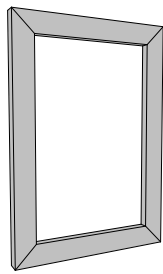
Podium - Podium



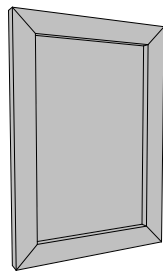
Picture Frame 4 - Universal - Picture Frame with different Front



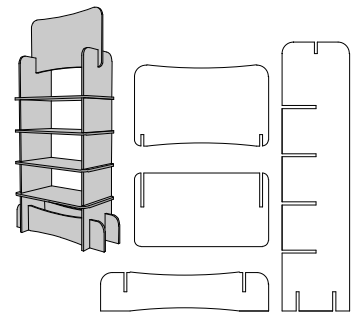
Picture Frame 3 - Picture Frame, with backside recess



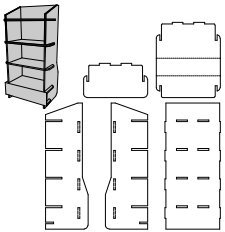
Picture Frame 2 - Picture Frame, simple



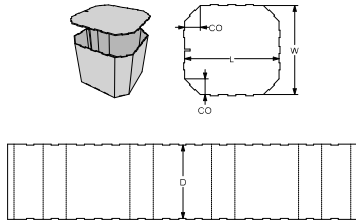
Picture Frame 1 - Picture Frame with Full Backside



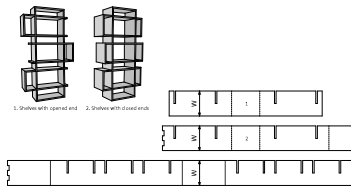
Open Shelf Display



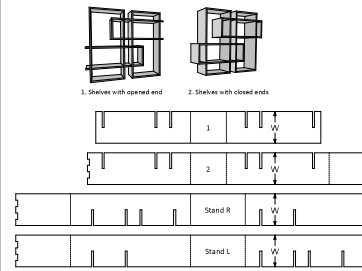
Multi-Shelf Display (3-4 Shelves) RPC - Eco Display Express



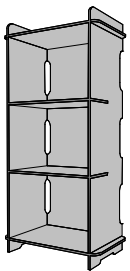
Drum Package



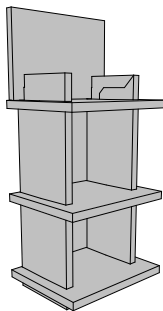
Display Single Stand



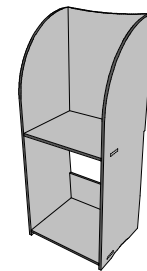
Display Double Stand



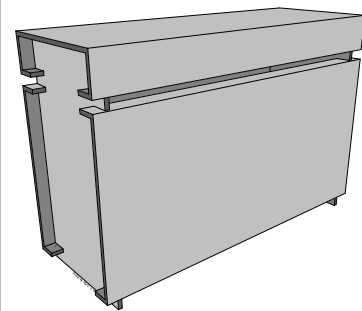
Display 4 - 3 or 4 shelves in different styles



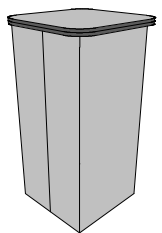
Display 2 - Display, 3 Shelf



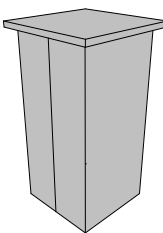
Display 1 - Display, 2 Shelves, Simple



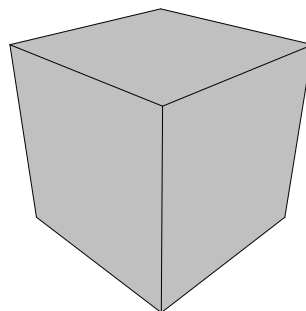
Desk 1 - Desk, Counter



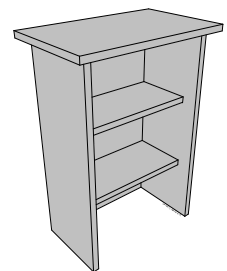
Demo Counter 2 - Display Counter, No shelves, Round double top



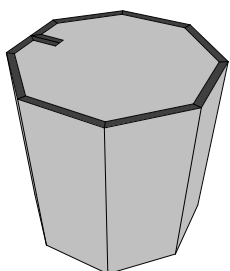
Demo Counter 1 - Display Counter, No shelves, Square Folded top



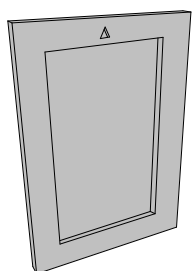
Cube - Cube, Square, Box



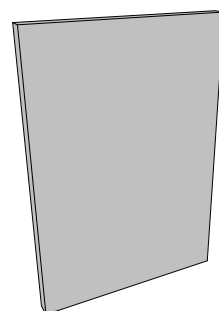
Counter (2 Shelves) - Counter, 2 Shelves



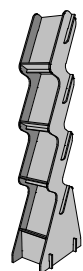
Column (Octagon) - Pillar, Octagon



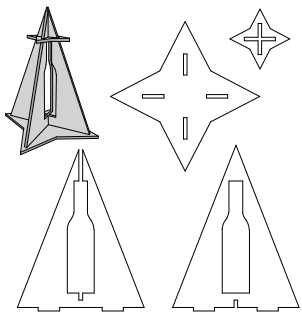
Canvas 2 - Picture Canvas, variable thickness



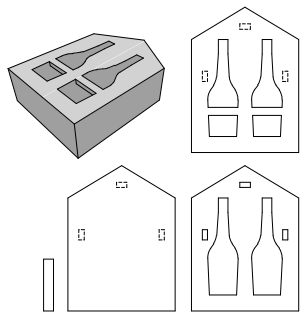
Canvas 1 - Picture Canvas



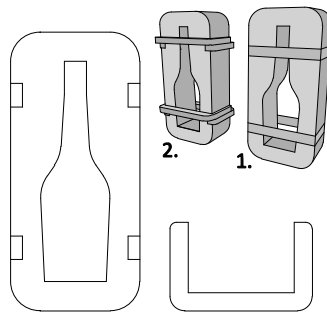
Brochure Stand - Brochure Stand, Display



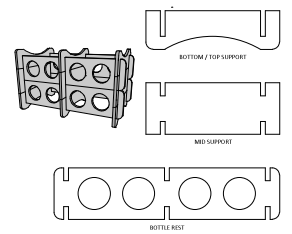
Bottle Tree



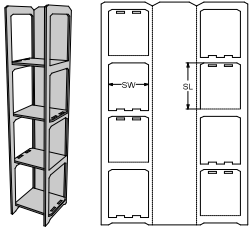
Bottle Solid Case Style C



Bottle Solid Case



Bottle Rest Assembling - 2 - 4 Bottles in A Row, Rows Number - From 2 And More.



Bookcase - One Piece Stand With Variated Number Of Shelves